

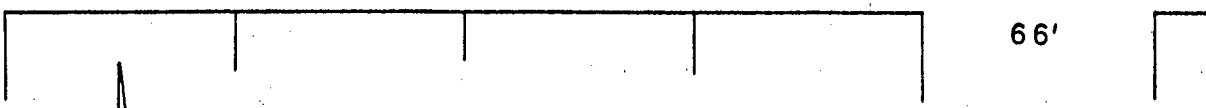
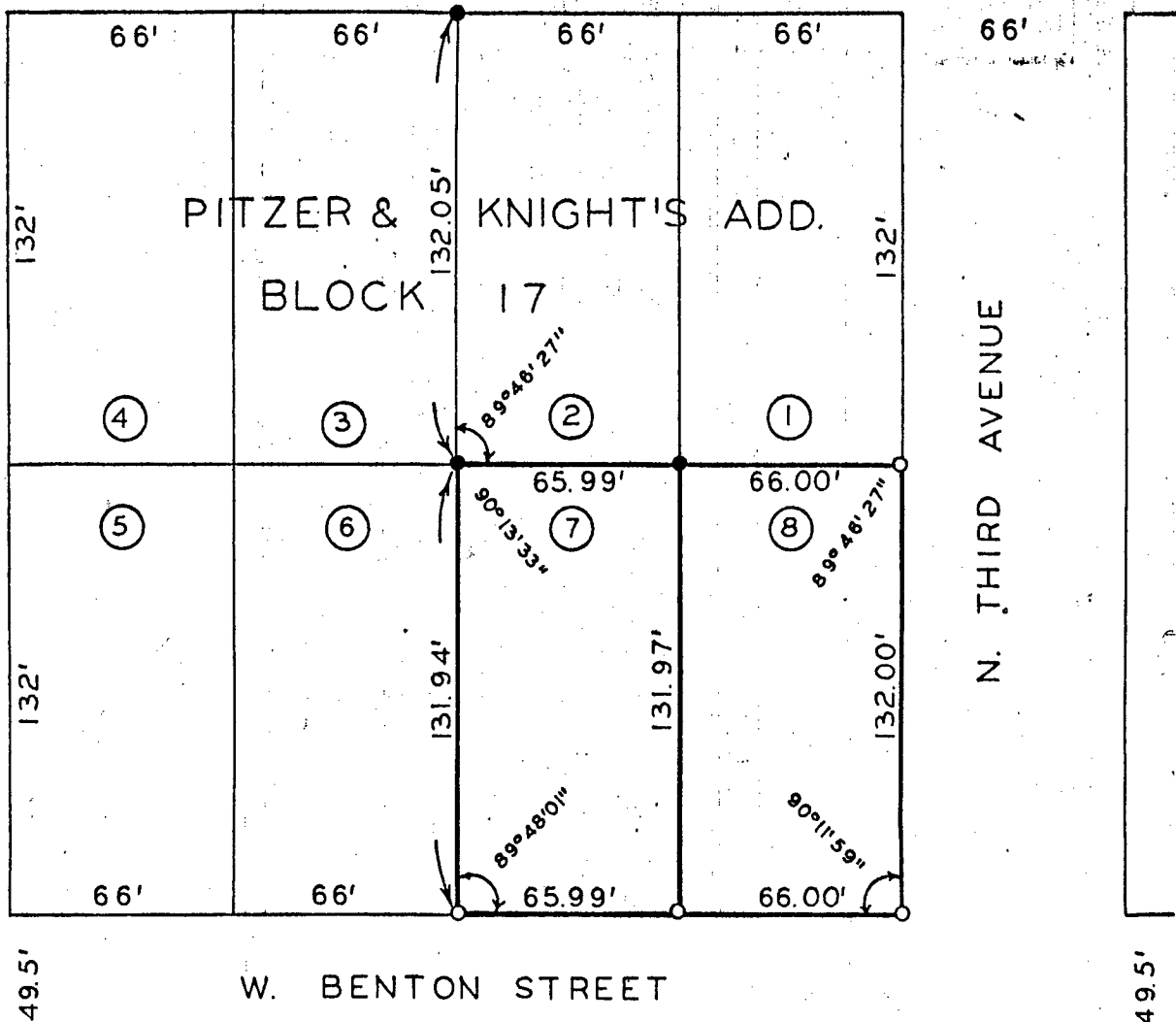
PLAT OF SURVEY FOR BETTY ANN SHAW
 OF LOTS 7 AND 8 IN BLOCK 17 OF PITZER & KNIGHT'S
 ADDITION TO THE CITY OF WINTERSET, MADISON COUNTY,
 IOWA. COMPUTER

IND.
 REC.
 PAGE

FILED NO. **1389**
 BOOK 2 PAGE 65
 TOWN PLAT
 1989 JAN 10 AM 9:32

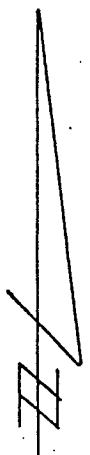
MARY E. WELTY
 RECORDER
 MADISON COUNTY, IOWA
 Fee \$5.00

Computer



SCALE: 1" = 50'

- FOUND C.I.R.#5041
- SET C.I.R.#5041



I HEREBY CERTIFY THAT THIS PLAN, SPECIFICATION, PLAT, MAP, SURVEY OR REPORT WAS MADE BY ME OR UNDER MY DIRECT PERSONAL SUPERVISION AND THAT I AM A DULY REGISTERED PROFESSIONAL ENGINEER AND LAND SURVEYOR UNDER THE LAWS OF THE STATE OF IOWA
 SIGNED _____ DATE _____

Charles T. Vance 19 Dec 1988
 Charles T. Vance, P.E. & L.S. Iowa Reg. No. 5041

VANCE & HOCHSTETLER, P.C.
 CONSULTING ENGINEERS
 WINTERSET, IOWA 50273