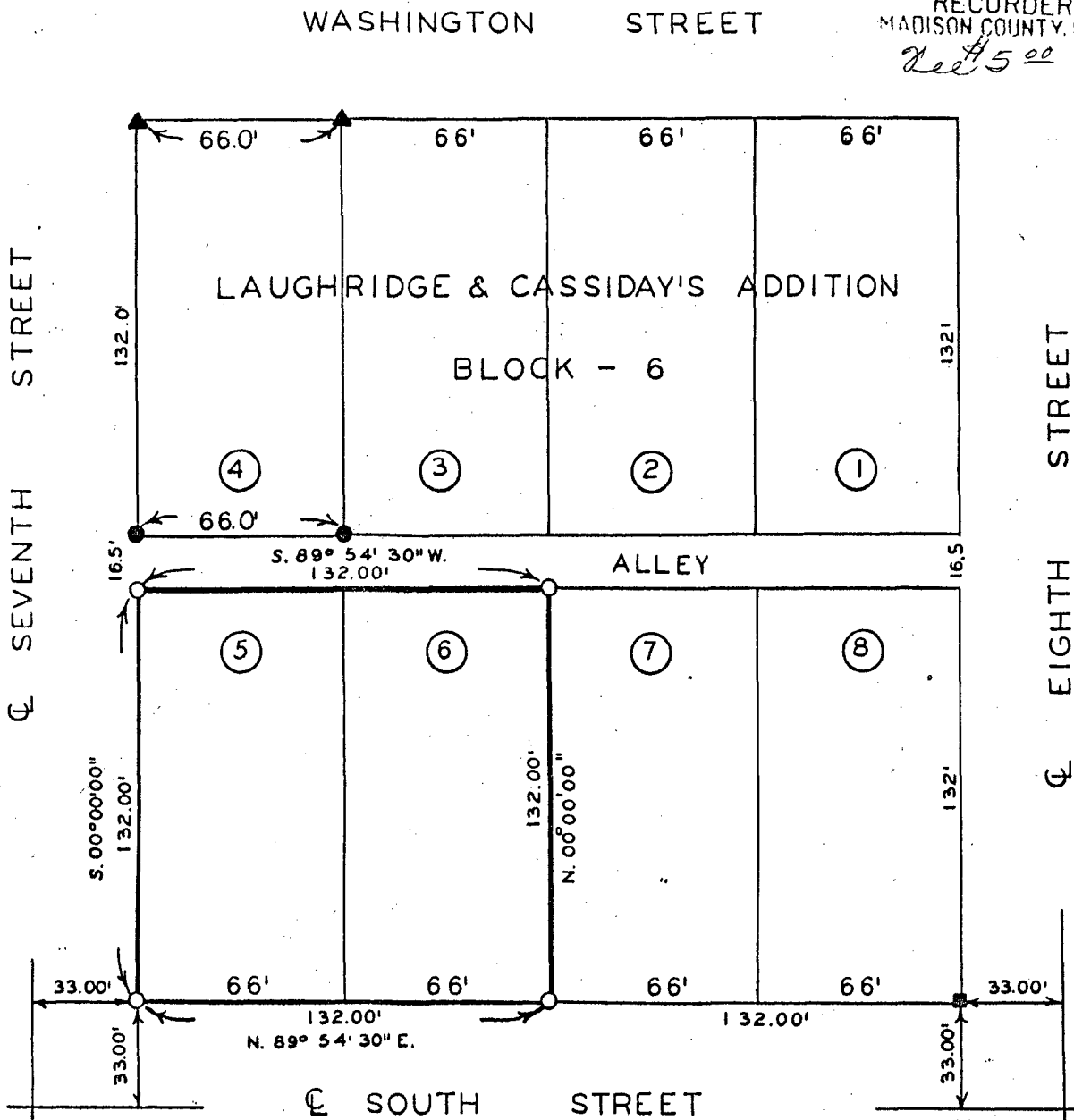


PLAT OF SURVEY FOR BEV. & AVERY SANDERSON
OF LOTS 5 AND 6, BLOCK 6, LAUGHRIDGE AND
CASSIDAY'S ADDITION TO THE CITY OF WINTERSET
MADISON COUNTY, IOWA.

COMPARSED COMPUTER

FILED NO. 1099
BOOK 2 PAGE 64
Town Plat
1988 NOV 30 PM 1:27

MARY E. WELTY
RECORDER
MADISON COUNTY, IOWA
Del \$5.00



SCALE: 1" = 50'

- ▲ FOUND "X" IN SWK.
- FOUND C.I.R. # 5041
- SET C.I.R. # 5041
- SET NAIL



I HEREBY CERTIFY THAT THIS PLAN, SPECIFICATION, PLAT, MAP, SURVEY OR REPORT WAS MADE BY ME OR UNDER MY DIRECT PERSONAL SUPERVISION AND THAT I AM A DULY REGISTERED PROFESSIONAL ENGINEER AND LAND SURVEYOR UNDER THE LAWS OF THE STATE OF IOWA

SIGNED *Charles T. Vance* 17 Nov 1988
Charles T. Vance, P.E. & L.S. Iowa Reg. No. 5041

VANCE & HOCHSTETLER, P.C.
CONSULTING ENGINEERS
71 JEFFERSON
WINTERSET, IOWA 50273