

COMPUTER

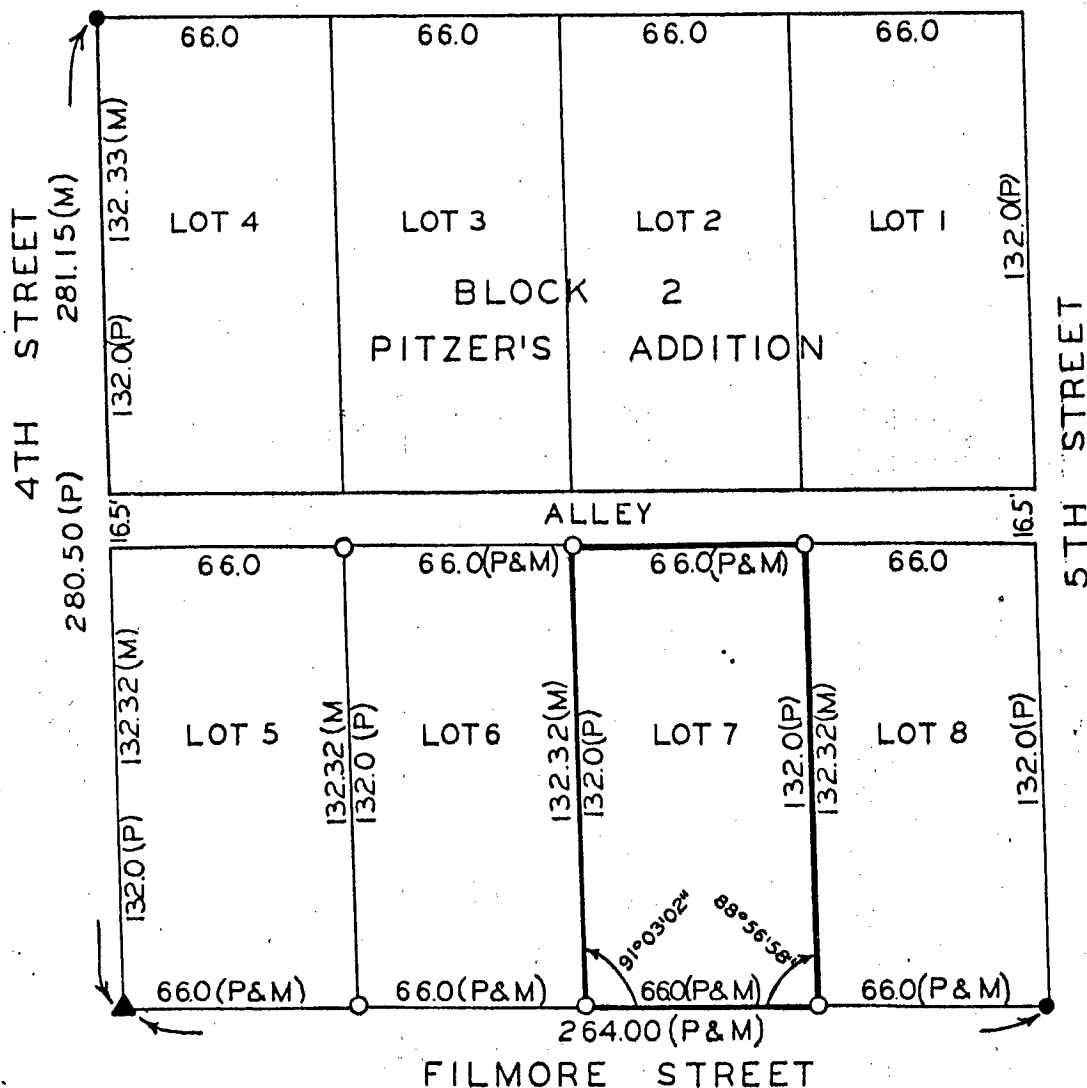
PLAT OF SURVEY FOR MARY ANN PARKER
OF LOT 7, BLOCK 2, PITZER'S ADDITION
TO THE CITY OF WINTerset, MADISON
COUNTY, IOWA.

FILED NO. 926
BOOK 2 PAGE 63
TOWN PLAT
1988 NOV -1 AM 11:47

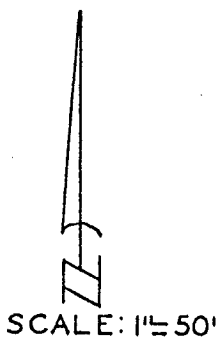
MARY E. WELTY
RECORDER
MADISON COUNTY, IOWA
Fee \$5.00

IND. REC. PAGE

BUCHANAN STREET



- LEGEND
- ▲ FOUND STONE
 - FOUND 60-D NAIL
 - SET C.I.R.#5041
 - (P) PLATTED DIMENSION
 - (M) MEASURED DIMENSION



I HEREBY CERTIFY THAT THIS PLAN, SPECIFICATION, PLAT, MAP, SURVEY OR REPORT WAS MADE BY ME OR UNDER MY DIRECT PERSONAL SUPERVISION AND THAT I AM A DULY REGISTERED PROFESSIONAL ENGINEER AND LAND SURVEYOR UNDER THE LAWS OF THE STATE OF IOWA

SIGNED *Charles T. Vance* 11 Oct. 1988
Charles T. Vance, P.E. & L.S. Iowa Reg. No. 5041

VANCE & HOCHSTETLER, P.C.
CONSULTING ENGINEERS
71 JEFFERSON
WINTerset, IOWA 50273