

88-137S

PLAT OF SURVEY FOR DIANA LYNN OF LOT 6, BLOCK 2, PITZER'S ADDITION TO THE CITY OF WINTERSET, MADISON COUNTY, IOWA.

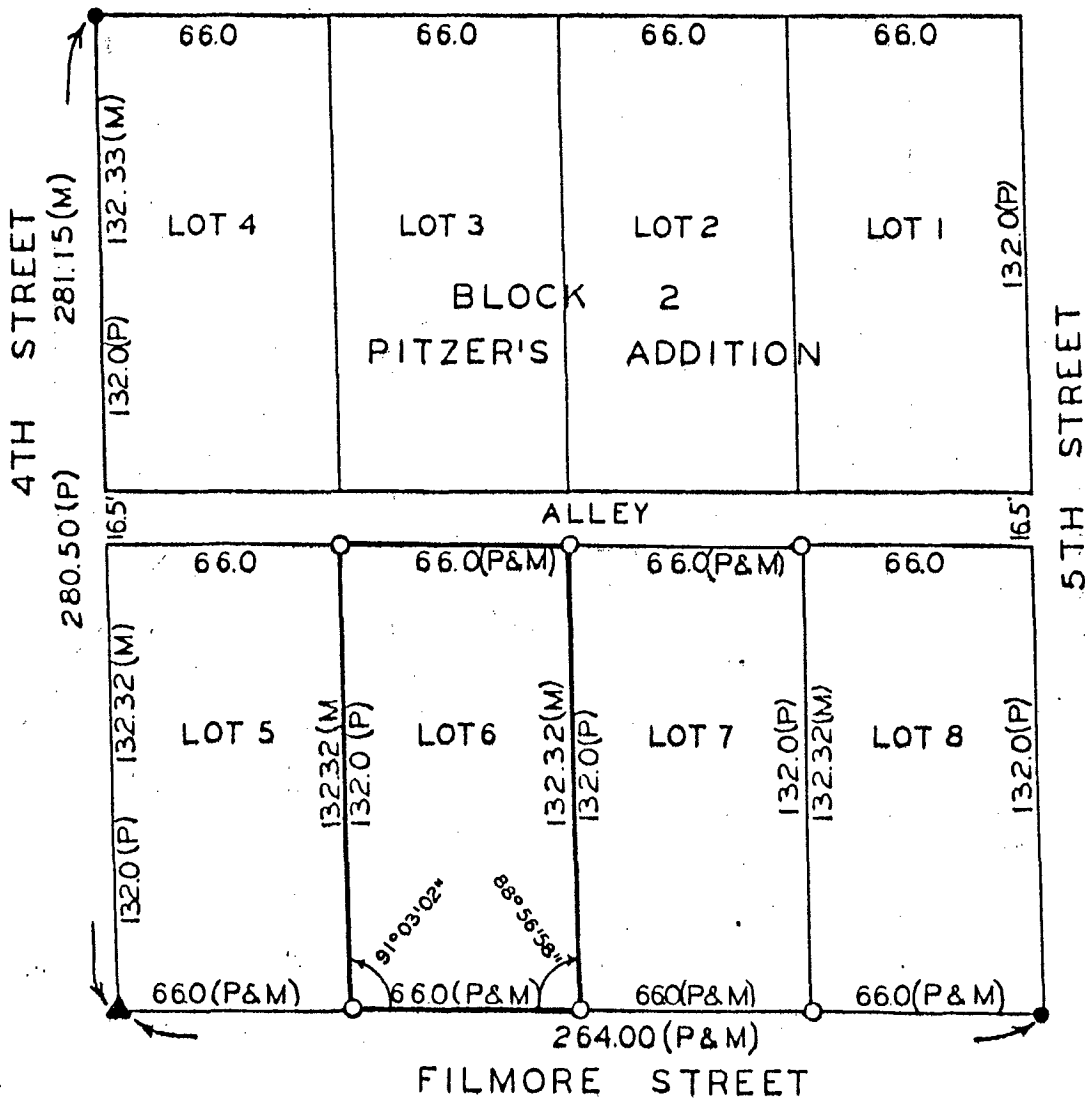
COMPUTER

FILED NO. 925
BOOK 2 PAGE 62
TOWN PLAT
1988 NOV -1 AM 11:46

MARY E. WELTY
RECORDER
MADISON COUNTY IOWA
Fee \$5.00

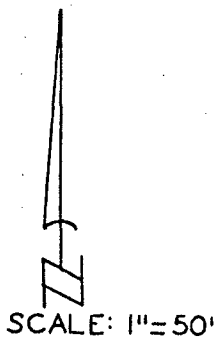
IND. REC. PAGE

BUCHANAN STREET



LEGEND

- ▲ FOUND STONE
- FOUND 60-D NAIL
- SET C.I.R. #5041
- (P) PLATTED DIMENSION
- (M) MEASURED DIMENSION



I HEREBY CERTIFY THAT THIS PLAN, SPECIFICATION, PLAT, MAP, SURVEY OR REPORT WAS MADE BY ME OR UNDER MY DIRECT PERSONAL SUPERVISION AND THAT I AM A DULY REGISTERED PROFESSIONAL ENGINEER AND LAND SURVEYOR UNDER THE LAWS OF THE STATE OF IOWA

SIGNED *Charles T. Vance* 11 Oct. 1988
Charles T. Vance, P.E. & L.S. Iowa Reg. No. 5041

VANCE & HOCHSTETLER, P.C.
CONSULTING ENGINEERS
71 JEFFERSON
WINTERSET, IOWA 273