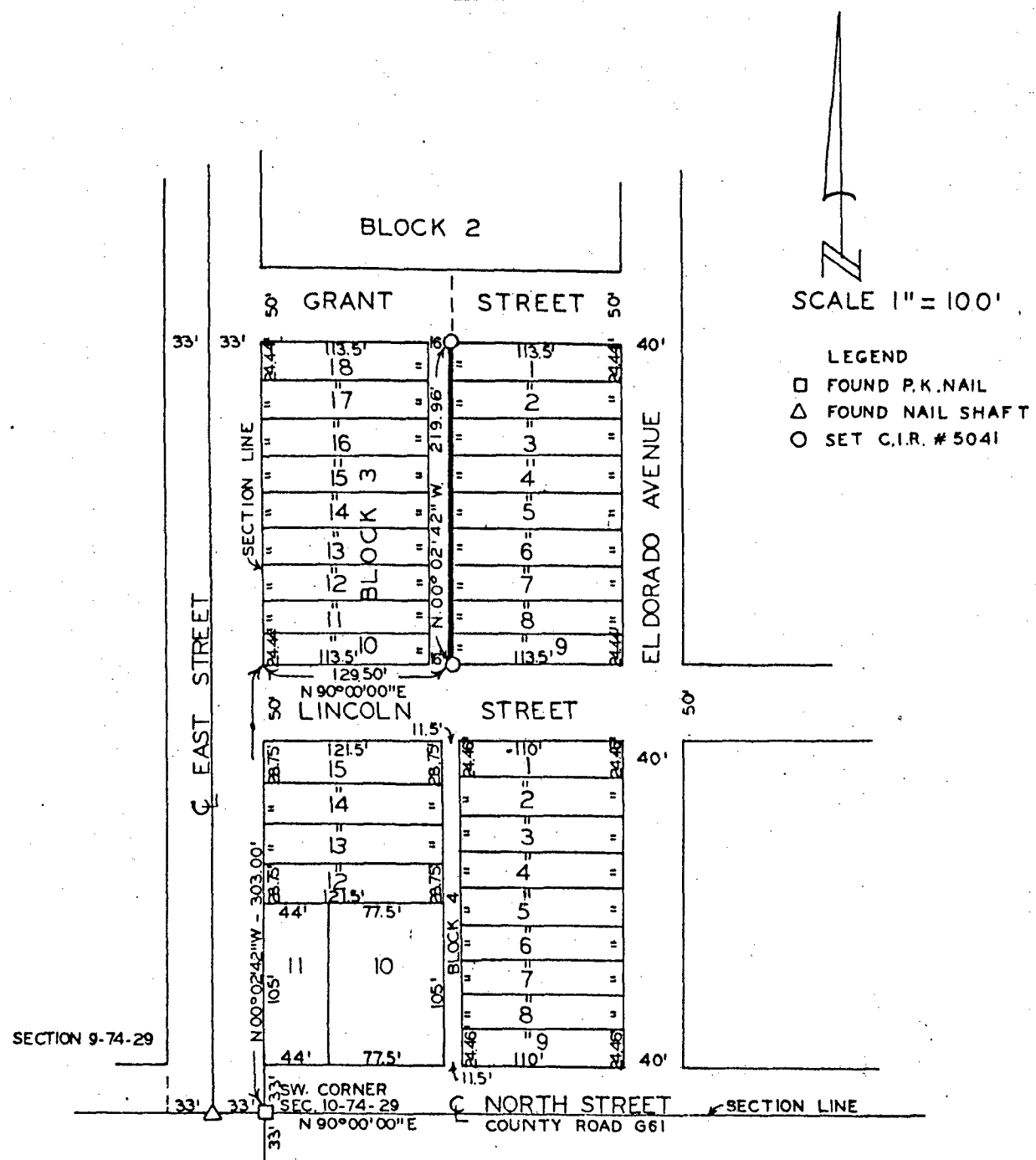


PLAT OF SURVEY FOR FARMERS CO-OP AFTON-MACKSBURG OF THE WEST LINE OF LOTS 1 THRU 9, BLOCK 3, BARKER'S SECOND ADDITION TO THE TOWN OF MACKSBURG, MADISON COUNTY, IOWA.



SCALE 1" = 100'

LEGEND

- FOUND P.K. NAIL
- △ FOUND NAIL SHAFT
- SET C.I.R. # 5041

SECTION 9-74-29

SECTION 16-74-29

SECTION 15-74-29

FILED NO. **705**
 BOOK 2 PAGE 36
 Town Plat
 1987 OCT 20 AM 11:20

Compared

MARY E. WELTY
 RECORDER
 MADISON COUNTY, IOWA

Fee \$5.00

I HEREBY CERTIFY THAT THIS PLAN, SPECIFICATION, MAP, SURVEY OR REPORT WAS MADE BY ME OR UNDER MY DIRECT PERSONAL SUPERVISION AND THAT I AM A DULY REGISTERED PROFESSIONAL ENGINEER AND LAND SURVEYOR UNDER THE LAWS OF THE STATE OF IOWA.

DATE 23 Sept. 1987
Charles T. Vance
 Charles T. Vance, P.E. & L.S. Iowa Reg. No. 5041

VANCE & HOCHSTETLER, P.C.
 CONSULTING ENGINEERS
 71 JEFFERSON STREET
 WINTERSET, IOWA 50273