

PLAT OF SURVEY FOR THE WINTERSET CEMETERY
IMPROVEMENT ASSOCIATION IN THE NORTHWEST
FRACTIONAL QUARTER OF THE NORTHWEST
QUARTER OF SECTION 6, TOWNSHIP 75 NORTH,
RANGE 27 WEST OF THE 5TH PRINCIPAL
MERIDIAN, CITY OF WINTERSET,
MADISON COUNTY, IOWA.

Compared

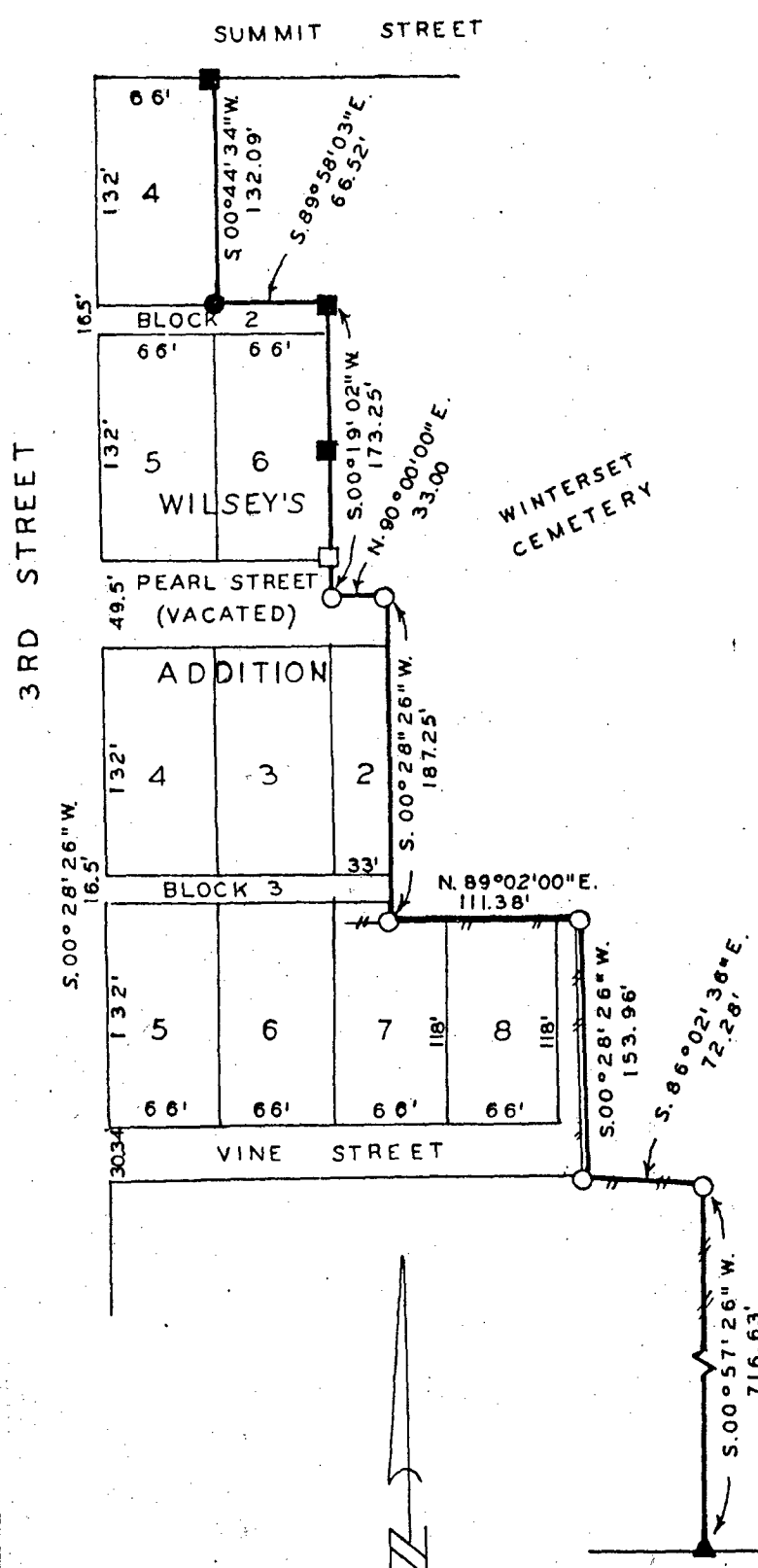
703

FILED NO. BOOK 2 PAGE 34

Town Plat 1987 OCT 20 AM 11:18

MARY E. WELTY
RECORDER
MADISON COUNTY, IOWA

Fee \$5.00



SCALE: 1" = 100'

- LEGEND
- ▲ FOUND C.I.R. #6808
 - FOUND C.I.R. #5041
 - FOUND 1/2" IRON ROD
 - FOUND CONCRETE MONUMENT
 - SET C.I.R. # 5041
 - EXISTING FENCE

I HEREBY CERTIFY THAT THIS PLAN, SPECIFICATION, PLAT, MAP, SURVEY OR REPORT WAS MADE BY ME OR UNDER MY DIRECT PERSONAL SUPERVISION AND THAT I AM A DULY REGISTERED PROFESSIONAL ENGINEER AND LAND SURVEYOR UNDER THE LAWS OF THE STATE OF IOWA

DATE
Charles T. Vance 12 Oct. 1987
Charles T. Vance, P.E. & L.S. Iowa Reg. No. 5241

VANCE & HOCHSTETLER, P.C.
CONSULTING ENGINEERS
71 JEFFERSON STREET
WINTERSET, IOWA 50273