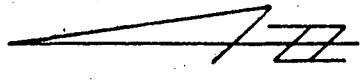
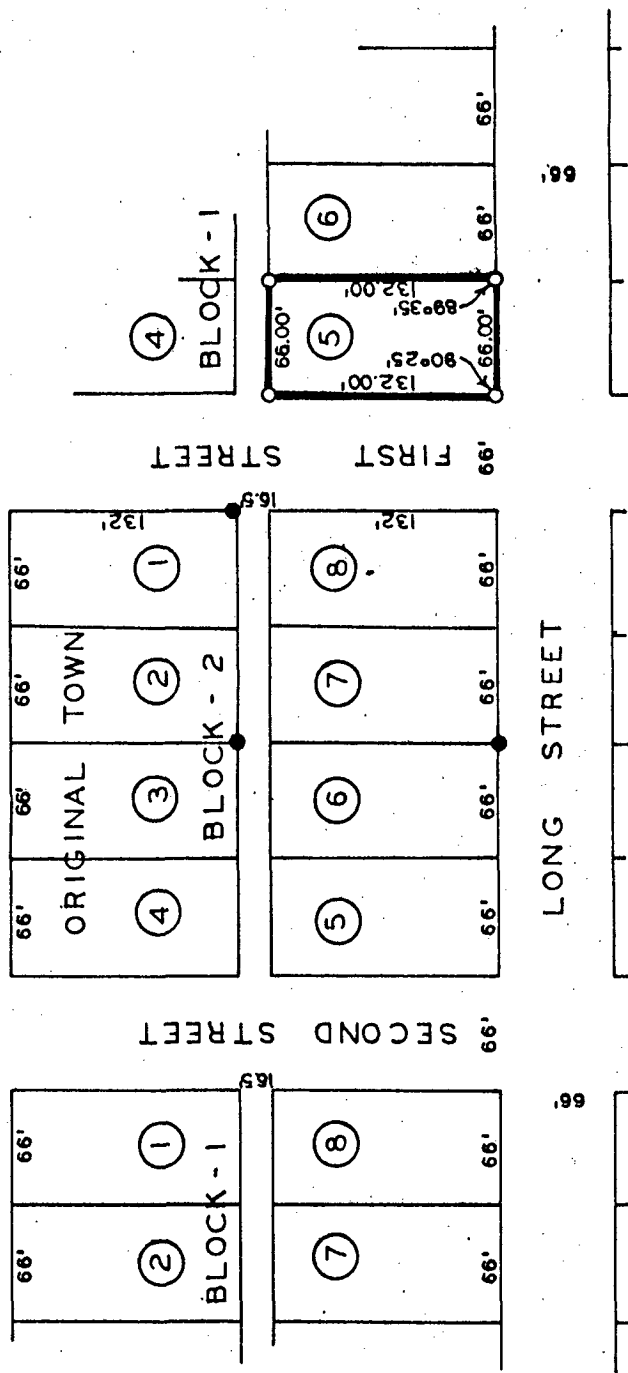


PLAT OF SURVEY FOR ALAN BOWN OF LOT 5,  
 BLOCK 1, ORIGINAL TOWN OF PATTERSON,  
 MADISON COUNTY, IOWA



- SCALE: 1" = 100'
- SET C.I.R. #5041
  - FOUND IRON PIN

FILED NO. **484**  
 BOOK 2 PAGE 31  
 TOWN PLAT  
 1987 SEP 18 AM 8:08

MARY E. WELTY  
 RECORDER  
 MADISON COUNTY, IOWA  
 Fee \$5.00

I HEREBY CERTIFY THAT THIS PLAN, SPECIFICA-  
 TION, PLAT, MAP, SURVEY OR REPORT WAS MADE  
 BY ME OR UNDER MY DIRECT PERSONAL SUPERVI-  
 SION AND THAT I AM A DULY REGISTERED PROFES-  
 SIONAL ENGINEER AND LAND SURVEYOR UNDER  
 THE LAWS OF THE STATE OF IOWA

*Charles T. Vance* 17 Aug 1987  
 Charles T. Vance, P.E. & L.S. Iowa Reg. No. 5341

VANCE & HOCHSTETLER, P.C.  
 CONSULTING ENGINEERS  
 71 JEFFERSON  
 WINTERSET, IOWA 50273