

PLAT OF SURVEY MADE FOR H.L. CARTER AND DAVID PICKAR OF LOTS 3 AND 4 IN BLOCK - 1, LINDSEY'S ADDITION TO THE CITY OF WINTERSET, MADISON COUNTY, IOWA.

444

FILED NO. 444  
BOOK 2 PAGE 30  
TOWN PLAT  
1987 SEP -9 PM 1:25

MARY E. WELTY  
RECORDER  
MADISON COUNTY, IOWA  
Fee \$5.00

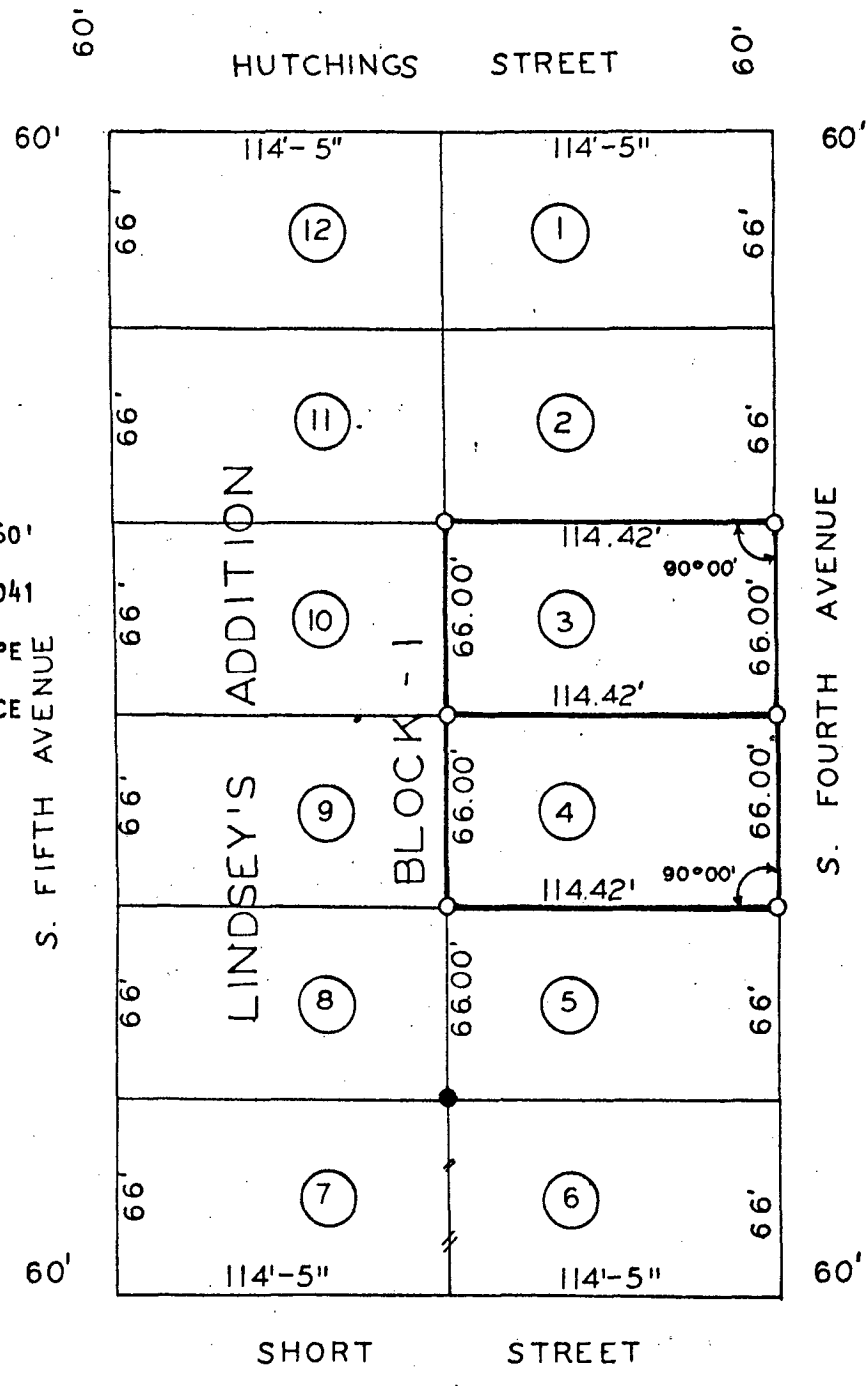


SCALE: 1" = 60'

○ SET C.I.R. # 5041

● FD. 1" IRON PIPE

--- EXISTING FENCE



I HEREBY CERTIFY THAT THIS PLAN, SPECIFICATION, PLAT, MAP, SURVEY OR REPORT WAS MADE BY ME OR UNDER MY DIRECT PERSONAL SUPERVISION AND THAT I AM A DULY REGISTERED PROFESSIONAL ENGINEER AND LAND SURVEYOR UNDER THE LAWS OF THE STATE OF IOWA

DATE  
*Charles T. Vance* 14 Aug 1987  
Charles T. Vance, P.E. & L.S. Iowa Reg. No. 5341

VANCE & HOCHSTETLER, P.C.  
CONSULTING ENGINEERS  
71 JEFFERSON STREET  
WINTERSET, IOWA 50273