

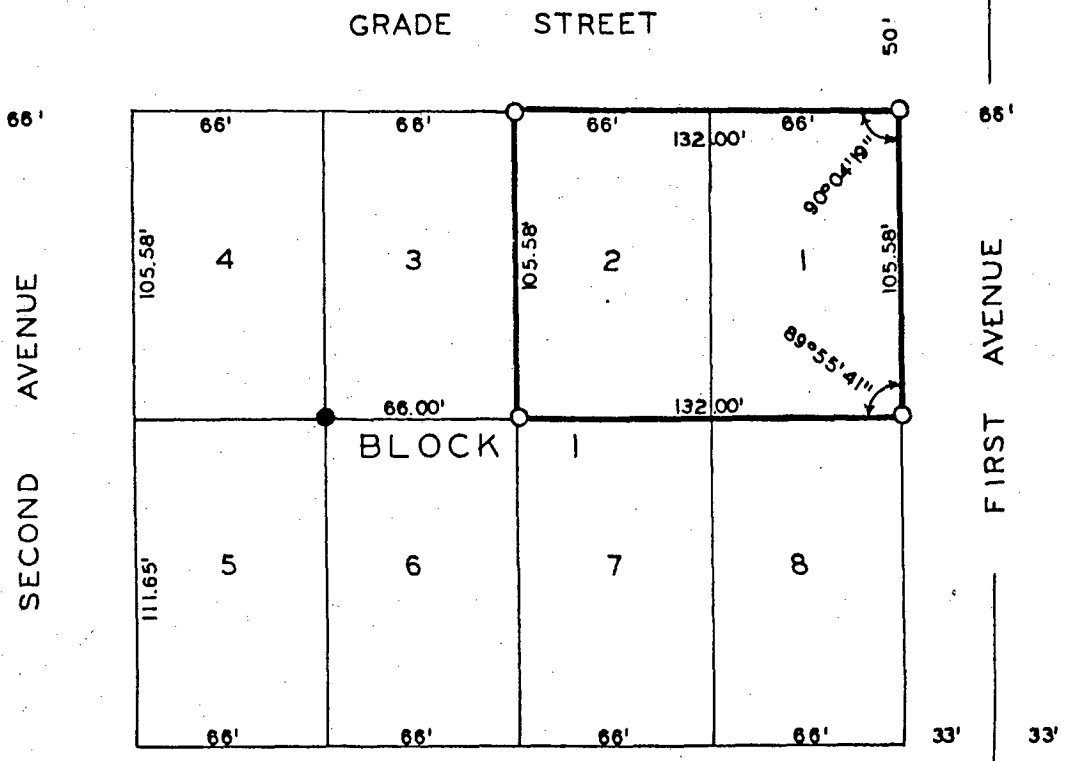
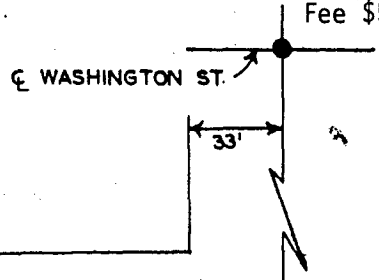
PLAT OF SURVEY FOR LARRY WELCH
OF LOTS 1 AND 2, BLOCK 1, BOWLSBY ADDITION
TO THE CITY OF WINTERSET, MADISON COUNTY, IOWA

FILED NO. 62
BOOK 2 PAGE 28
Town Plat
1987 JUL 14 PH 1:19

I HEREBY CERTIFY THAT THIS PLAN, SPECIFICATION, PLAT, MAP, SURVEY OR REPORT WAS MADE BY ME OR UNDER MY DIRECT PERSONAL SUPERVISION AND THAT I AM A DULY REGISTERED PROFESSIONAL ENGINEER AND LAND SURVEYOR UNDER THE LAWS OF THE STATE OF IOWA

DATE
Charles T. Vance 22 June 1987
Charles T. Vance, P.E. & L.S. Iowa Reg. No. 5241

MARY E. WELTY
RECORDER
MADISON COUNTY, IOWA
Fee \$5.00



42'
32.4'

SUMMIT STREET

SECTION LINE



SCALE: 1" = 60'

LEGEND

- SET C.I.R. #5041
- FOUND 1/2" IRON PIN

VANCE & HOCHSTETLER, P.C.
CONSULTING ENGINEERS
71 JEFFERSON STREET
WINTERSET, IOWA 50273