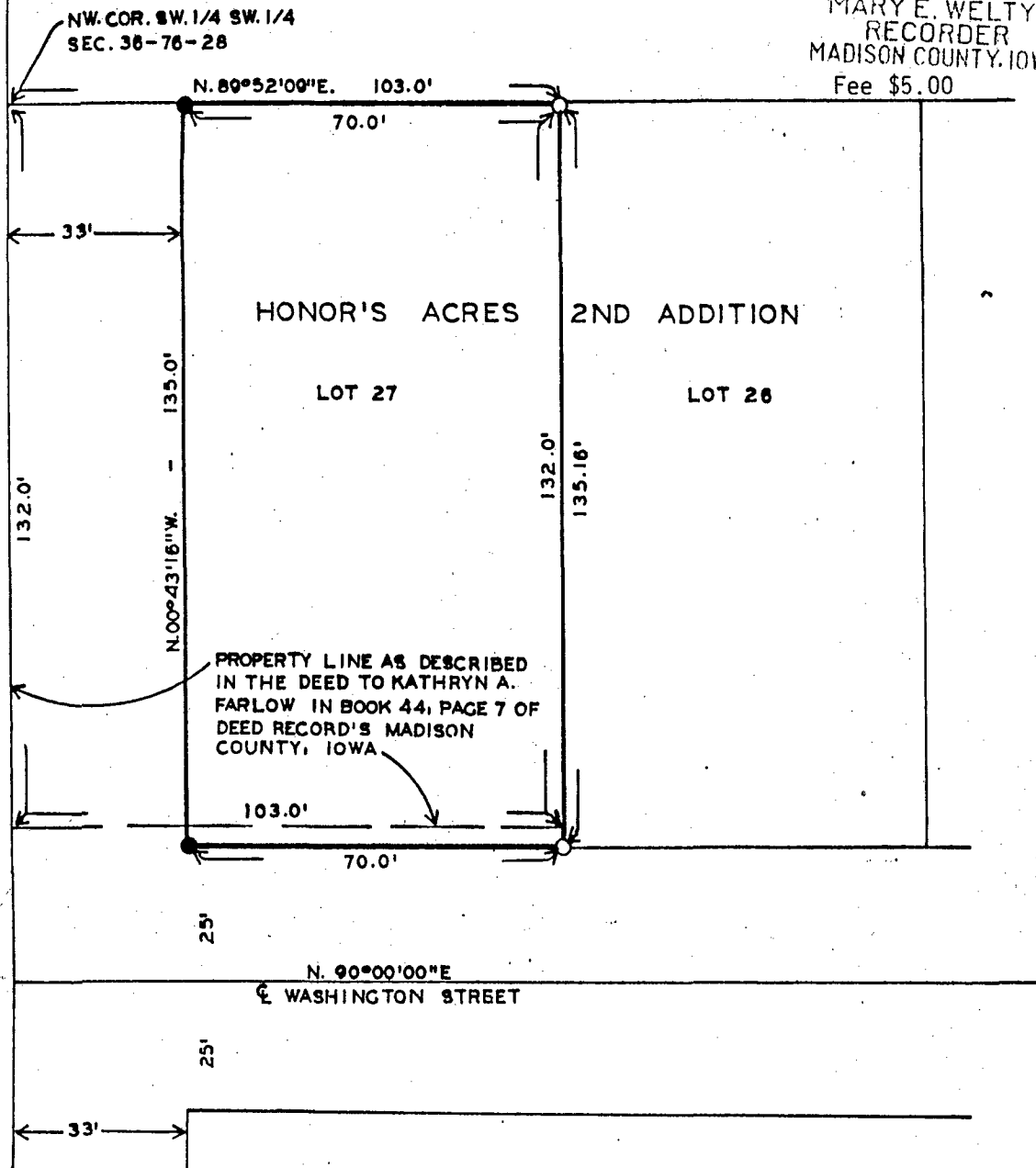


PLAT OF SURVEY MADE AT THE REQUEST OF PAT CORKREAN
 OF LOT 27, HONOR'S ACRES 2ND ADDITION TO THE CITY
 OF WINTERSSET, MADISON COUNTY, IOWA

FILED NO. **2276**
 BOOK 2 PAGE 45
 TOWN PLAT
 1988 JUN -9 AM 11:04

MARY E. WELTY
 RECORDER
 MADISON COUNTY, IOWA
 Fee \$5.00



PROPERTY LINE AS DESCRIBED
 IN THE DEED TO KATHRYN A.
 FARLOW IN BOOK 44, PAGE 7 OF
 DEED RECORD'S MADISON
 COUNTY, IOWA

N. 90°00'00"E
 WASHINGTON STREET

DEED DESCRIPTION:
 The West 103 feet of the North 132 feet of the N. 1/4
 of the SW. 1/4 of the SW. 1/4 of Section 36, T76N, R28W
 of the 5th P.M., Madison County, Iowa

I HEREBY CERTIFY THAT THIS PLAN, SPECIFICA-
 TION, PLAT, MAP, SURVEY OR REPORT WAS MADE
 BY ME OR UNDER MY DIRECT PERSONAL SUPERVI-
 SION AND THAT I AM A DULY REGISTERED PROFES-
 SIONAL ENGINEER AND LAND SURVEYOR UNDER
 THE LAWS OF THE STATE OF IOWA
 SIGNED DATE

Charles T. Vance 6 May 1988
 Charles T. Vance, P.E. & L.S. Iowa Reg. No. 5041

SCALE: 1" = 30'
 LEGEND
 ● FOUND 1/2" IRON ROD
 ○ SET C.I.R. #5041
 --- EXISTING FENCE

VANCE & HOCHSTETLER, P.C.
 CONSULTING ENGINEERS
 WINTERSSET, IOWA 50273