

PLAT OF SURVEY FOR HELEN SHUTT OF LOT 10 AND THE SOUTH 62 FEET OF LOT 11, BLOCK 2, HULL'S ADDITION TO THE TOWN OF TRURO, MADISON COUNTY, IOWA: AND THE NORTH 24 FEET OF LOT 12 AND THE SOUTH 43 FEET OF LOT 13, BLOCK 2, HULL'S ADDITION TO THE TOWN OF TRURO, MADISON COUNTY, IOWA

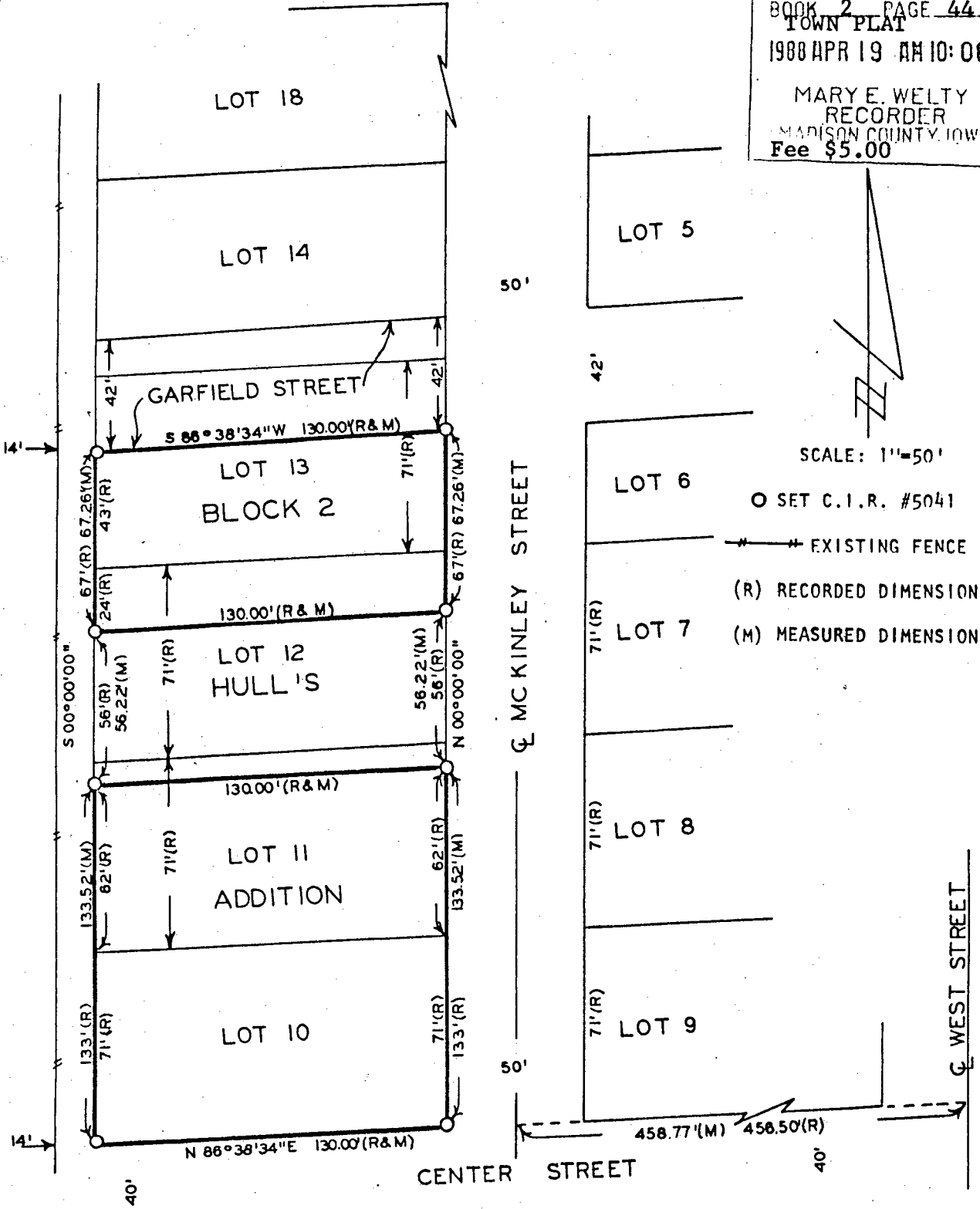
IND.
REC.
PAGE

COMP. 1988

COUNTY ROAD

FILED NO. **1900^c**
BOOK 2 PAGE 44
TOWN PLAT
1988 APR 19 AM 10:06

MARY E. WELTY
RECORDER
MADISON COUNTY, IOWA
Fee \$5.00



I HEREBY CERTIFY THAT THIS PLAN, SPECIFICATION, PLAT, MAP, SURVEY OR REPORT WAS MADE BY ME OR UNDER MY DIRECT PERSONAL SUPERVISION AND THAT I AM A DULY REGISTERED PROFESSIONAL ENGINEER AND LAND SURVEYOR UNDER THE LAWS OF THE STATE OF IOWA
SIGNED _____ DATE _____

Charles T. Vance 24 March 1988
Charles T. Vance, P.E. & L.S. Iowa Reg. No. 5041

VANCE & HOCHSTETLER, P.C.
CONSULTING ENGINEERS
WINTERSET, IOWA