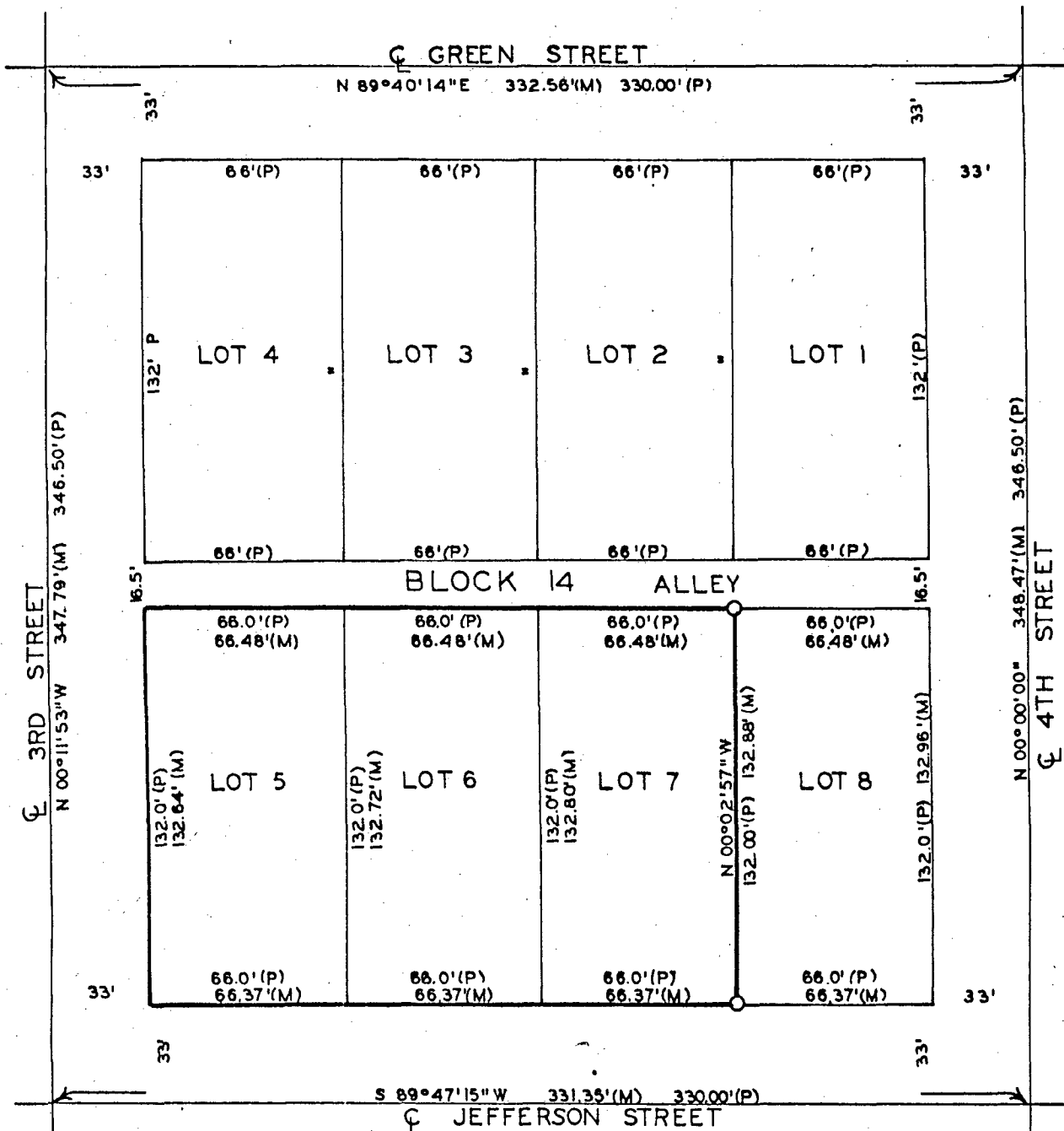


PLAT OF SURVEY FOR FIRST UNITED METHODIST CHURCH OF LOTS 5, 6 AND 7, BLOCK 14, ORIGINAL TOWN OF WINTERSET, MADISON COUNTY, IOWA



FILED NO. **1898**
 BOOK 2 PAGE 42
 TOWN PLAT
 1980 APR 19 AM 10:04
 MARY E. WELTY
 RECORDER
 MADISON COUNTY, IOWA
 Fee \$5.00

Completed

I HEREBY CERTIFY THAT THIS PLAN, SPECIFICATION, PLAT, MAP, SURVEY OR REPORT WAS MADE BY ME OR UNDER MY DIRECT PERSONAL SUPERVISION AND THAT I AM A DULY REGISTERED PROFESSIONAL ENGINEER AND LAND SURVEYOR UNDER THE LAWS OF THE STATE OF IOWA
 SIGNED Charles T. Vance DATE 15 April 1983
 Charles T. Vance, P.E. & L.S. Iowa Reg. No. 5041

IND.
 REC.
 PAGE

- SET C.I.R. #5041
- (P) PLATTED DIMENSION
- (M) MEASURED DIMENSION

SCALE: 1"=50'

VANCE & HOCHSTETLER, P.C.
 CONSULTING ENGINEERS
 WINTERSET, IOWA