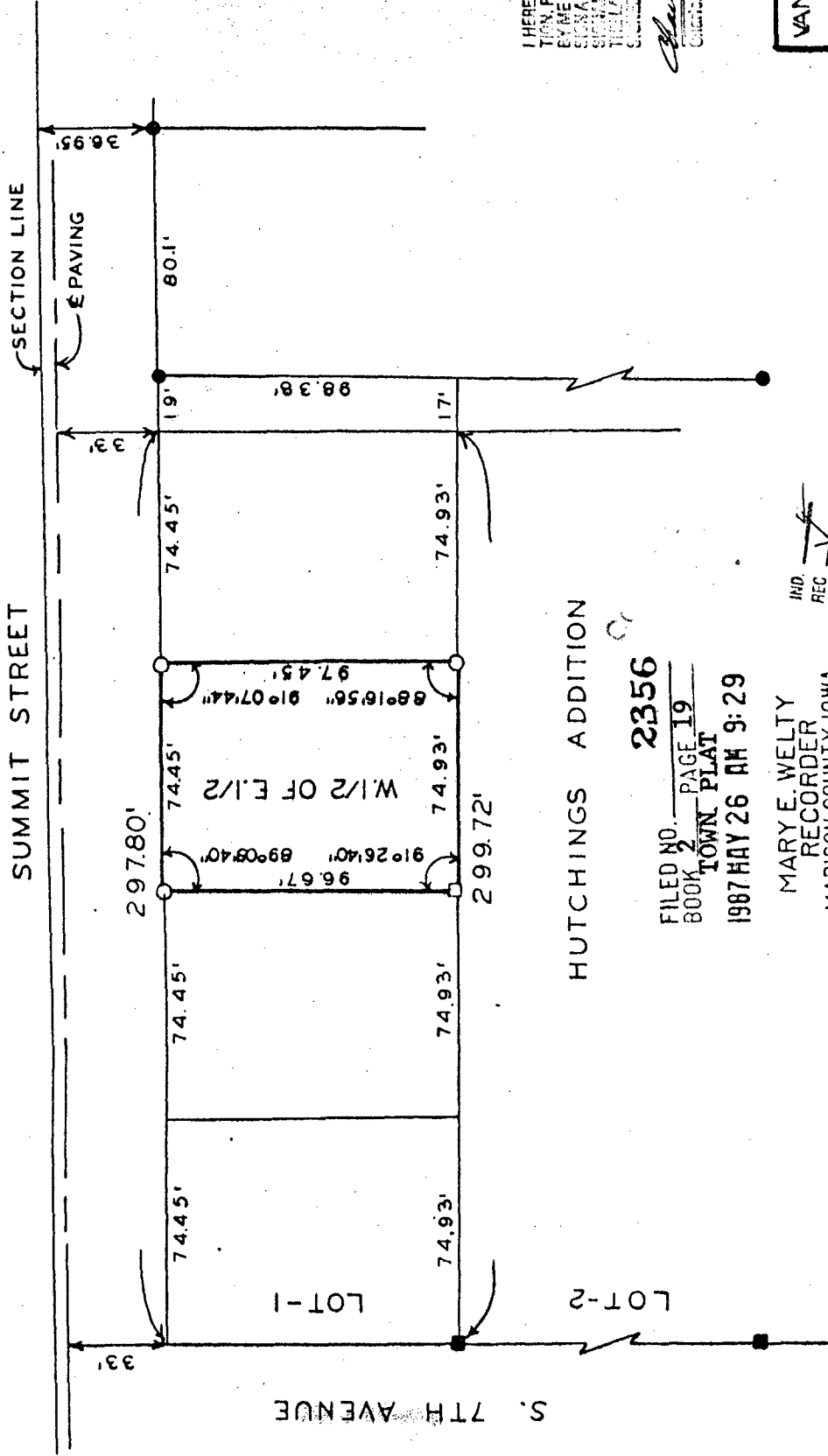
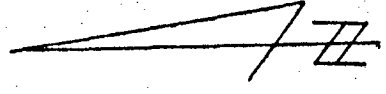


PLAT OF SURVEY FOR LARRY TYER OF THE WEST HALF OF THE EAST HALF OF LOT-1, HUTCHINGS ADDITION TO CITY OF WINTERSET, MADISON COUNTY, IOWA.



- SCALE: 1"=50'
- FOUND C.I.R. # 5041
 - FOUND 1/2" IRON PIN
 - SET C.I.R. # 5041
 - SET NAIL IN CONC. INTAKE TOP



I HEREBY CERTIFY THAT THIS PLAN, SPECIFICATION, PLAT, MAP, SURVEY OR REPORT WAS MADE BY ME OR UNDER MY DIRECT PERSONAL SUPERVISION AND THAT I AM A DULY REGISTERED PROFESSIONAL ENGINEER AND LAND SURVEYOR UNDER THE LAWS OF THE STATE OF IOWA. DATE

Charles T. Vance 1 April 1987
 Charles T. Vance, P.E. & L.S. Iowa Reg. No. 5341

VANCE & HOCHSTETLER, P.C.
 CONSULTING ENGINEERS
 WINTERSET, IOWA 50273

HUTCHINGS ADDITION

FILED NO. 2356
 BOOK 2 PAGE 19
 TOWN PLAT
 1987 MAY 26 AM 9:29

MARY E. WELTY
 RECORDER
 MADISON COUNTY, IOWA
 Fee \$5.00

IND. REC. PAGE
 19