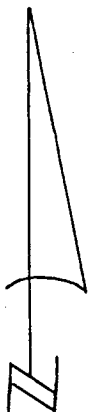
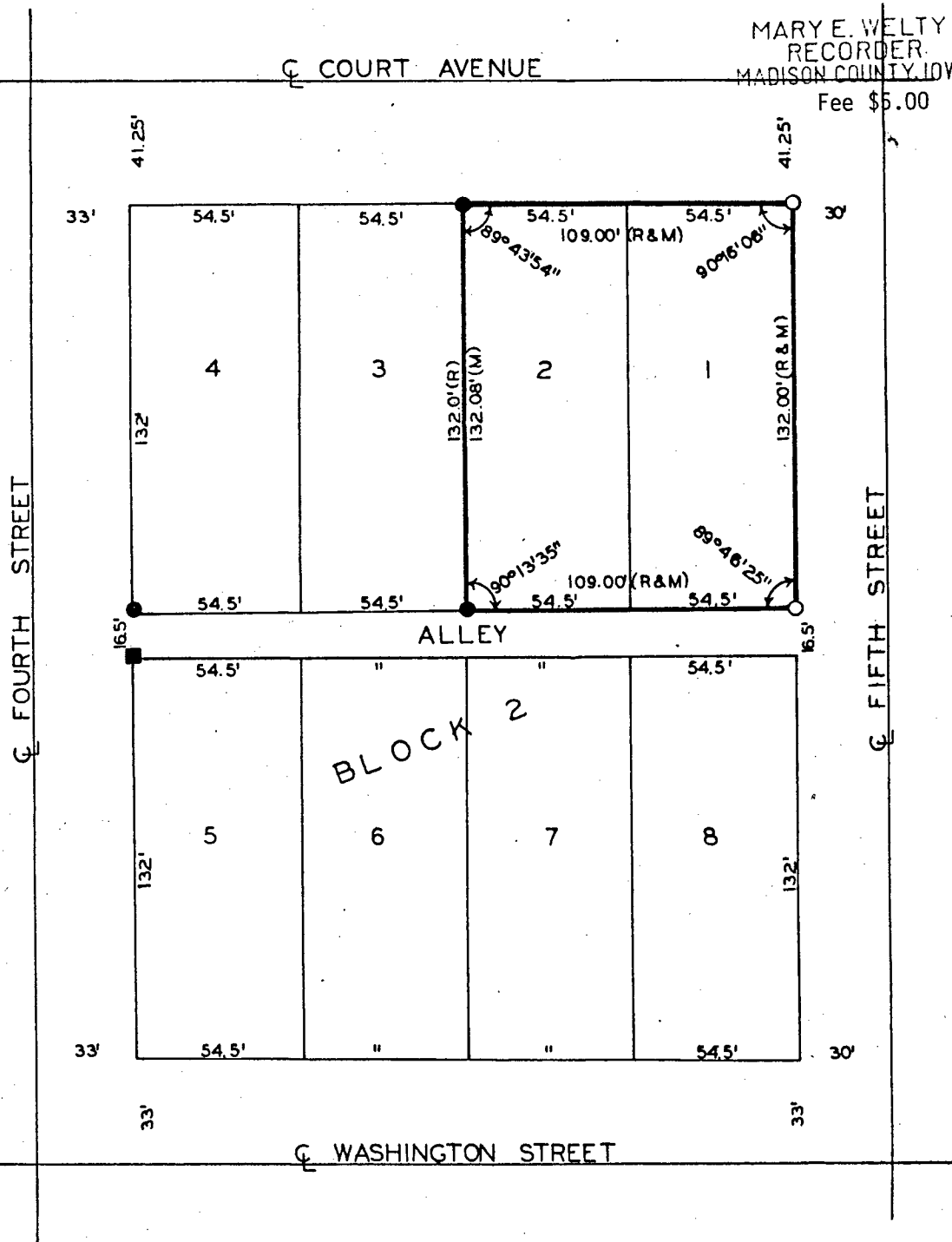


PLAT OF SURVEY FOR ROBERT SAWYER  
OF LOTS 1 AND 2, BLOCK 2, GAFF AND BEVINGTON  
ADDITION TO THE CITY OF WINTERSET, MADISON COUNTY, IOWA

FILED NO. **60**  
BOOK 2 PAGE 26  
Town Plat  
1987 JUL 14 PH 1:17

MARY E. WELTY  
RECORDER  
MADISON COUNTY, IOWA  
Fee \$5.00



SCALE: 1" = 50'

- FOUND 1/2" IRON PIN
- SET C.I.R. #5041
- FOUND C.I.R. #5041
- (R) RECORDED DIMENSION
- (M) MEASURED DIMENSION

I HEREBY CERTIFY THAT THIS PLAN, SPECIFICATION, PLAT, MAP, SURVEY OR REPORT WAS MADE BY ME OR UNDER MY DIRECT PERSONAL SUPERVISION AND THAT I AM A DULY REGISTERED PROFESSIONAL ENGINEER AND LAND SURVEYOR UNDER THE LAWS OF THE STATE OF IOWA

DATE  
*Charles T. Vance* 22 June 1987  
Charles T. Vance, P.E. & L.S. Iowa Reg. No. 5041

VANCE & HOCHSTETLER, P.C.  
CONSULTING ENGINEERS  
71 JEFFERSON STREET  
WINTERSET, IOWA 50273