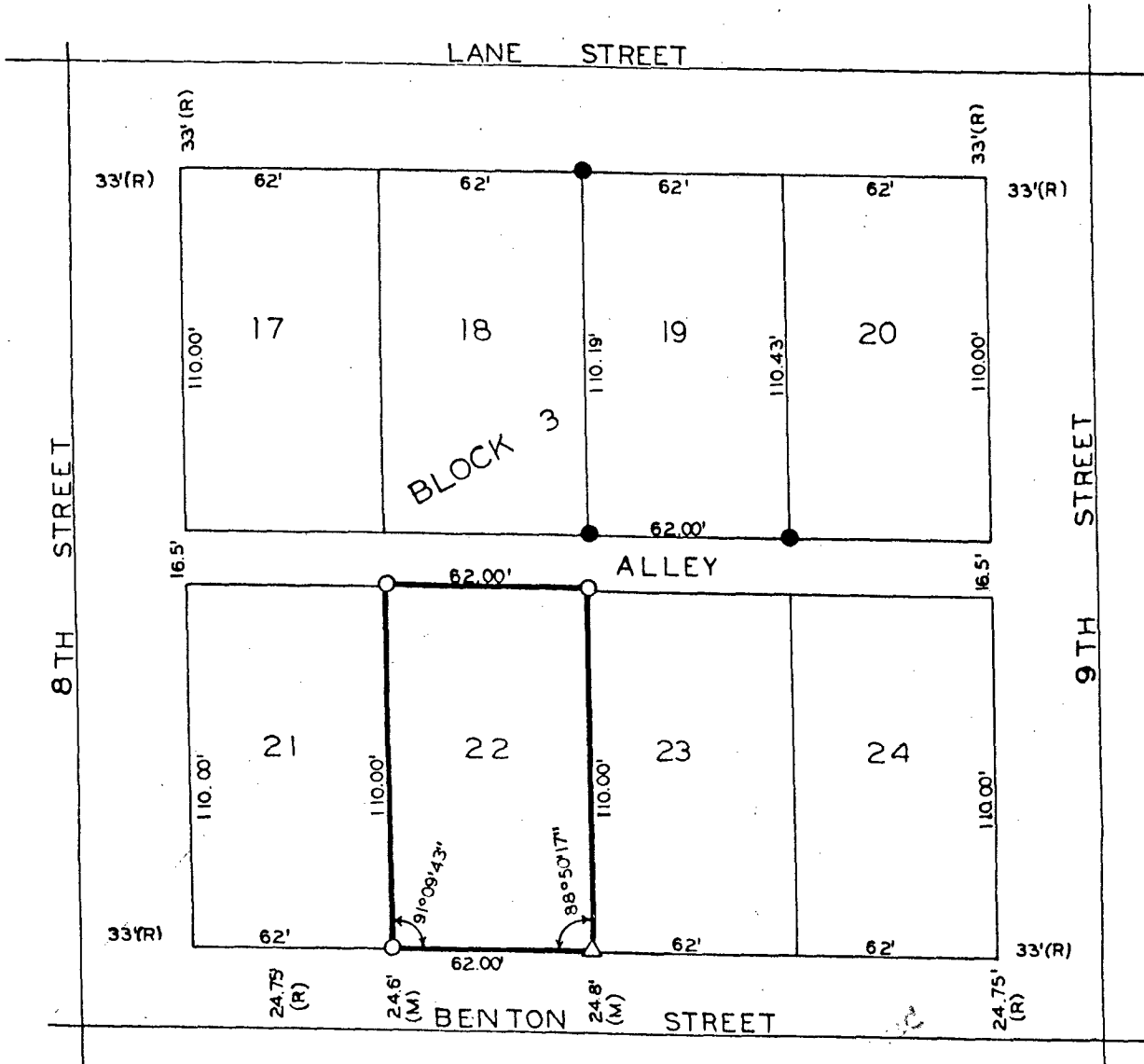


PLAT OF SURVEY FOR JEFF MCDONALD
OF LOT 22, BLOCK 3, DANFORTH'S 2ND ADDITION
TO WINTERSSET, IOWA



SCALE: 1" = 50'

- FOUND C.I.R. #8034
- SET C.I.R. #5041
- △ CUT "X" IN CONCRETE
- (M) MEASURED DIMENSION
- (R) RECORDED DIMENSION

FILED NO. **2556**
 BOOK 2 PAGE 24
 TOWN PLAT
 1987 JUN 16 PM 2:25

MARY E. WELTY
 RECORDER
 MADISON COUNTY, IOWA
 Fee \$5.00

I HEREBY CERTIFY THAT THIS PLAN, SPECIFICATION, PLAT, MAP, SURVEY OR REPORT WAS MADE BY ME OR UNDER MY DIRECT PERSONAL SUPERVISION AND THAT I AM A DULY REGISTERED PROFESSIONAL ENGINEER AND LAND SURVEYOR UNDER THE LAWS OF THE STATE OF IOWA

SIGNED *Charles T. Vance* DATE 11 June 1987
 Charles T. Vance, P.E. & L.S. Iowa Reg. No. 5341

VANCE & HOCHSTETLER, P.C.
 CONSULTING ENGINEERS
 71 JEFFERSON STREET
 WINTERSSET, IOWA 50273