

COMPUTER
 RECORDED
 COMPARED

FILED NO. 990
 BOOK 1 PAGE 693

REC \$ 5.00
 AUD \$ 1.00
 R.M.F. \$ 1.00

98 AUG 27 PM 2:25
 MICHELLE UTSLER
 RECORDER
 MADISON COUNTY, IOWA

VANCE & HOCHSTETLER, P.C., CONSULTING ENGINEERS, WINTERSSET, IOWA (515) 462-3995
 CHARLES T. VANCE, 110 West Green St., Winterset, Iowa, 50273
 JAMES M HOCHSTETLER, 110 West Green St., Winterset, Iowa 50273

UNITED STATES PUBLIC LAND SURVEY CORNER CERTIFICATE

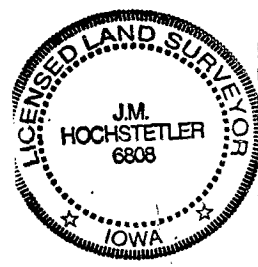
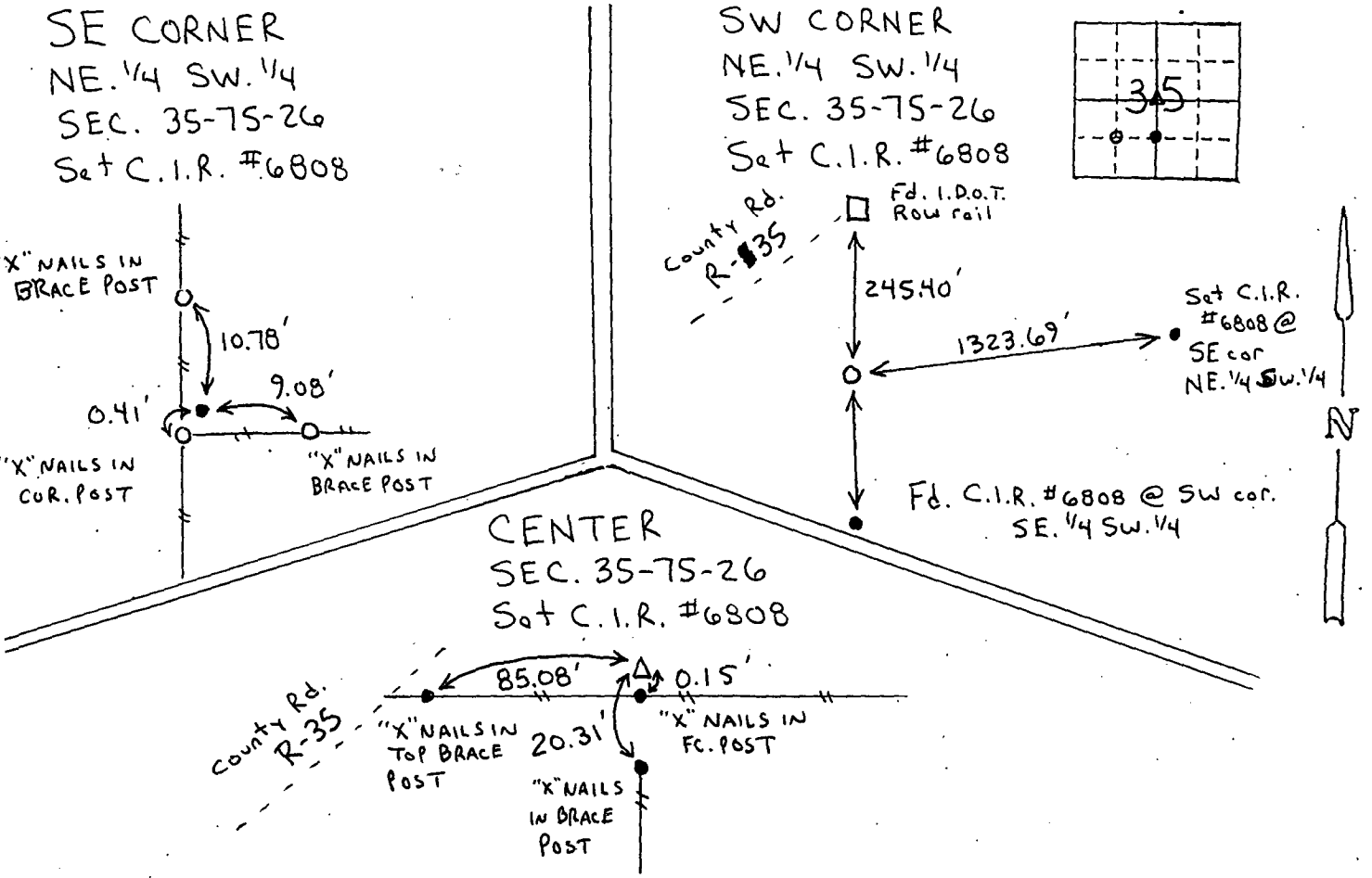
Land Survey Monuments situated in Section 35 OF Township 75 NORTH, Range 26 WEST of the Fifth Principal Meridian, MADISON County, Iowa.
 Previously recorded in _____ in County Recorder's Office.
 (book, page, document number, etc.)

(Show reason for preparing this certificate, the evidence and detailed procedures used in establishing the the corner positions and monumentation found or placed.)

Monument Description and Remarks:
SE cor. NE. 1/4 SW. 1/4 - Set C.I.R. #6808 at existing fence corner
SW cor. NE. 1/4 SW. 1/4 - Set C.I.R. #6808 at intersection of existing fence line from S. & line projected through SE cor. NE. 1/4 SW. 1/4 parallel to S. line of SE. 1/4 SW. 1/4.
Center - Set C.I.R. #6808 at existing fence intersection.

PLAN - VIEW

(Show a minimum of three reference ties to durable physical objects, relevant monuments and physical conditions that will enable recovery of the corner.)



I hereby certify that this land surveying document was prepared and the related survey work was performed by me or under my direct personal supervision and that I am a duly licensed Land Surveyor under the laws of the State of Iowa.
J.M. Hochstetler
 J.M. HOCHSTETLER
 License number 6808
 Date 8/24/98
 My license renewal date is December 31, 1999.
 Pages or sheets covered by this seal: 1

List Corners to be Indexed

Corners	Section	Twp	Range
SE cor. NE. 1/4 SW. 1/4	35	75N	26W
SW cor. NE. 1/4 SW. 1/4	35	75N	26W
CENTER	35	75N	26W