

COMPUTER
 RECORDED
 COMPARED

FILED NO. **963**
 BOOK 1 PAGE 692
 98 AUG 26 PM 2:40

REC \$ 5.00
 AUD \$ _____
 R.M.F. \$ 1.00

MICHELLE UTSLER
 RECORDER
 MADISON COUNTY, IOWA

SW IOWA TRANSPORTATION CENTER, IOWA D.O.T., P.O. BOX 406, ATLANTIC, IOWA 50022 712-243-3355

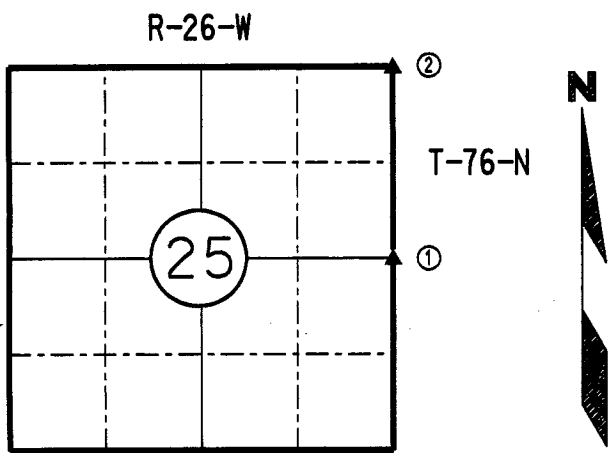
UNITED STATES PUBLIC LAND SURVEY CORNER CERTIFICATE

Section 25 Township 76N Range 26W County MADISON

970619 JOB
 257626-1.DGN



Certificate Prepared For: Permanent Easement to Construct and Maintain Storm Sewer (Parcel No. 83, Madison County Project FN-92-4(15)--21-61)



I hereby certify that this land surveying document was prepared by me and the related survey work was performed by me or under my direct supervision and that I am a duly licensed Land Surveyor under the laws of the State of Iowa.

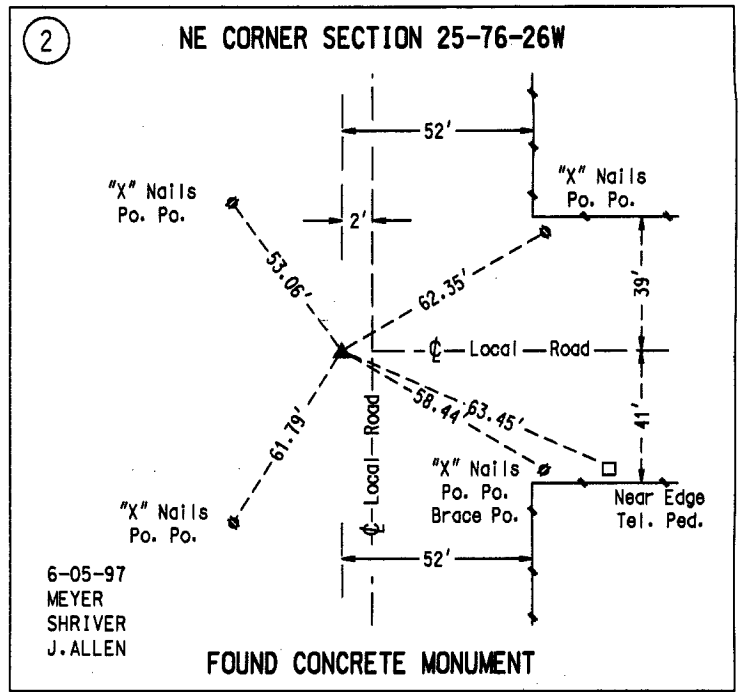
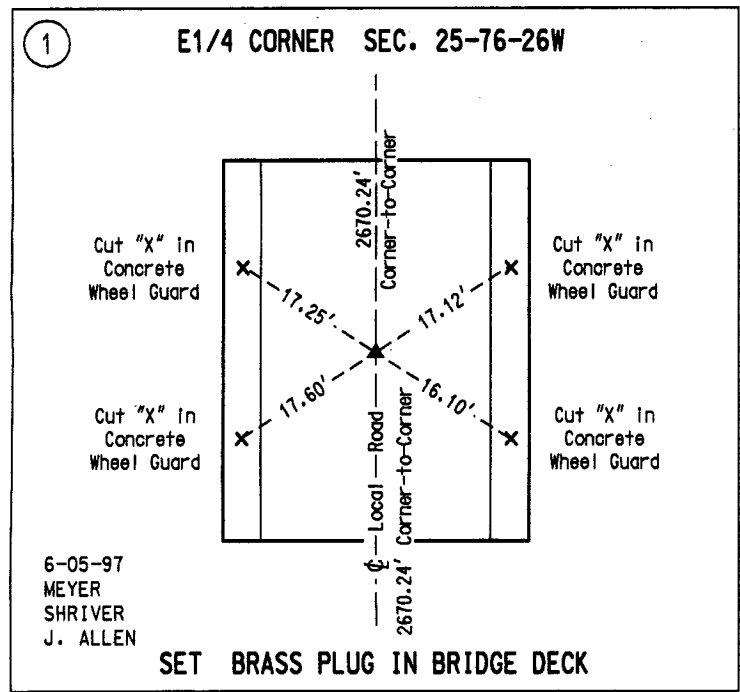
Mike J. Jensen 8-4-98
 Mike J. Jensen Date

License number 11953
 Pages covered by this seal 1
 My Registration Renewal date is December 31, 1998

MADISON COUNTY

MONUMENT DESCRIPTION AND REMARKS:

- ① Found nail in new bridge deck. Removed nail and set brass plug in concrete.
- ② Found concrete monument with brass plug and iron pin alongside.



LIST CORNERS TO BE INDEXED:			
CORNERS	SECTION	TWP.	RANGE
E1/4	25	76N	26W
NE	25	76N	26W