

MICHELLE UTSLER
RECORDER
MADISON COUNTY, IOWA

COMPUTER
RECORDED
COMPARED

REC \$ 500
AUD \$ _____
R.M.F. \$ 100

VANCE & HOCHSTETLER, P.C. CONSULTING ENGINEERS, WINTERSSET, IOWA (515)462-391

CHARLES T. VANCE, 110 West Green St., Winterset, Iowa 50273
JAMES M. HOCHSTETLER, 110 West Green St., Winterset, Iowa 50273

SLS19-94

UNITED STATES PUBLIC LAND SURVEY CORNER CERTIFICATE

OF

Land Survey Monuments situated in Section 5, Township 77 North, Range 26 West, of the Fifth Principal Meridian, MADISON County, Iowa. Previously recorded in _____ in County Recorder's Office.

(book, page, document number, etc.)

(Show reason for preparing this certificate, the evidence and detailed procedures used in establishing the corner positions and monumentation found or placed.)

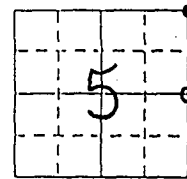
Monument Description and Remarks:

E. 1/4 cor. - Found 1" square bar

NE cor. - Found 5/8" Iron Pin over 1" square bar (raised by Mad. Co. Engineer's office).

PLAN - VIEW

(Show a minimum of three reference ties to durable physical objects, relevant monuments and physical conditions that will enable recovery of the corner.)

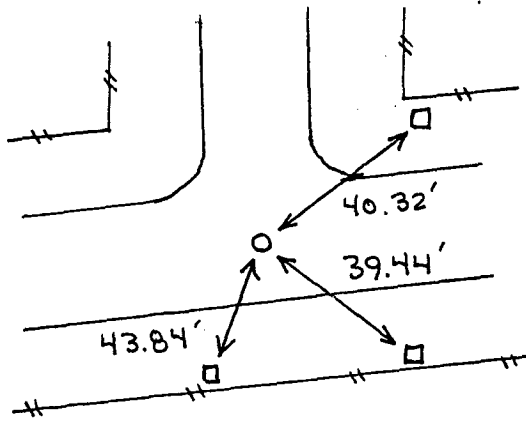


EAST 1/4 COR.

SEC. 5-77-26

Fd. 1" Square Bar

All ties are to "X"s cut into Grader Blades

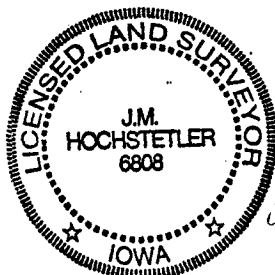
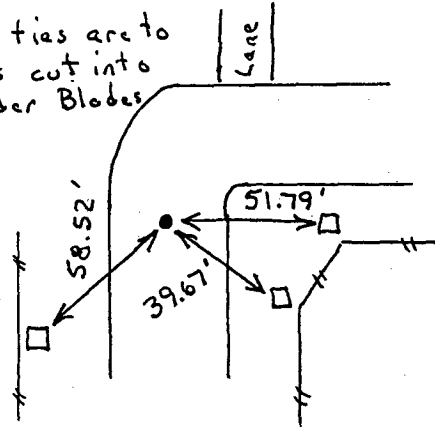


NE CORNER

SEC. 5-77-26

Fd. 5/8" Iron Pin

All ties are to "X"s cut into Grader Blades



I hereby certify that this land surveying document was prepared and the related survey work was performed by me or under my direct personal supervision and that I am a duly licensed Land Surveyor under the laws of the State of Iowa.

J.M. Hochstetler
J.M. HOCHSTETLER

License number 6808

Date 12/12/97

My license renewal date is December 31, 1997.

Pages or sheets covered by this seal: 1

List Corners to be Indexed

| Corners | Section | Twp | Range |
|-------------|---------|-----|-------|
| E. 1/4 cor. | 5 | 77N | 26W |
| NE cor. | 5 | 77N | 26W |