

REC \$ 5<sup>00</sup>  
 AUD \$ 00  
 R.M.F. \$ 00

FILED NO. 1657  
 BOOK 1 PAGE 700  
 98 OCT 16 AM 8:12

COMPUTER   
 RECORDED   
 COMPARED

MICHELLE UTSLER  
 RECORDER  
 MADISON COUNTY, IOWA

VANCE & HOCHSTETLER, P.C., CONSULTING ENGINEERS, WINTERSSET, IOWA (515) 462-3995  
 CHARLES T. VANCE, 110 West Green St., Winterset, Iowa, 50273  
 JAMES M HOCHSTETLER, 110 West Green St., Winterset, Iowa 50273

UNITED STATES PUBLIC LAND SURVEY CORNER CERTIFICATE

OF  
 Land Survey Monuments situated in Section 18, Township 75 NORTH, Range 26 WEST, of the Fifth Principal Meridian, MADISON County, Iowa.  
 Previously recorded in \_\_\_\_\_ in County Recorder's Office.  
 (book, page, document number, etc.)

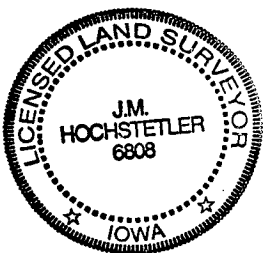
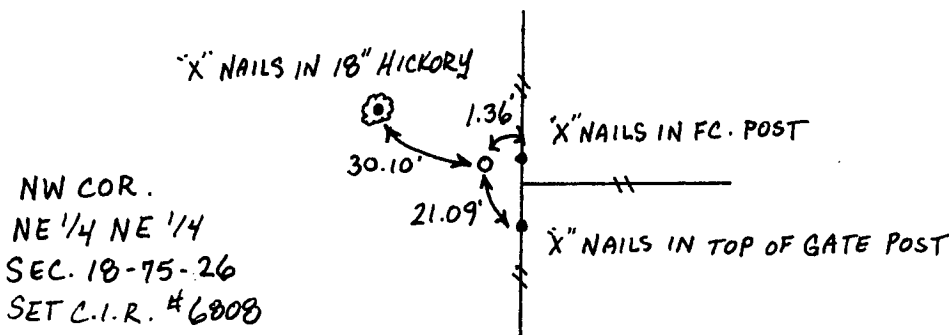
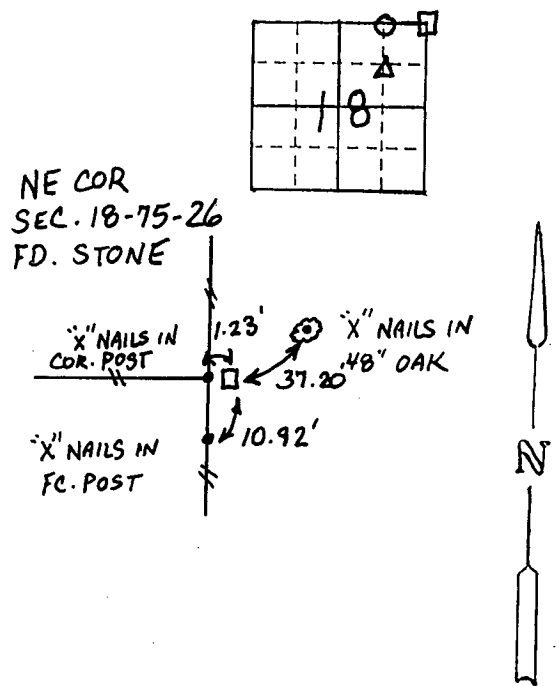
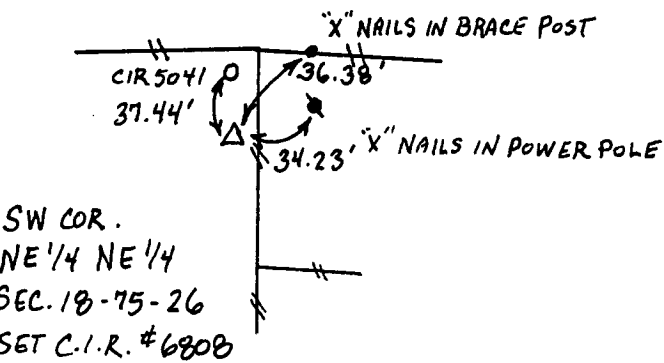
(Show reason for preparing this certificate, the evidence and detailed procedures used in establishing the the corner positions and monumentation found or placed.)

Monument Description and Remarks:

SW COR. NE 1/4 NE 1/4 - SET C.I.R. #6808 Set in existing old fences based on County Road Row Description  
NW COR. NE 1/4 NE 1/4 - SET C.I.R. #6808 Set in long established 4 way fence corner  
NE COR. - FD. STONE at point referenced in old ties in County Engineer stone record books.

PLAN - VIEW

(Show a minimum of three reference ties to durable physical objects, relevant monuments and physical conditions that will enable recovery of the corner.)



I hereby certify that this land surveying document was prepared and the related survey work was performed by me or under my direct personal supervision and that I am a duly licensed Land Surveyor under the laws of the State of Iowa.  
J.M. Hochstetler  
 J.M. HOCHSTETLER  
 License number 6808 Date 10/15/98  
 My license renewal date is December 31, 1999.  
 Pages or sheets covered by this seal: 1

List Corners to be Indexed			
Corners	Section	Twp	Range
SW COR. NE 1/4 NE 1/4	18	75	26
NW COR. NE 1/4 NE 1/4	18	75	26
NE COR.	18	75	26