

REC \$ None COMPUTER
 AUD \$ _____ RECORDED
 R.M.F. \$ _____ COMPARED

FILED NO. 240
 BOOK I PAGE 678
 98 JUL 14 PM 12:26

MICHELLE UTSLER
 RECORDER
 MADISON COUNTY, IOWA

Prepared By: J. Brian Morrissey, Madison County Engineer, P.O. Box 152 Winterset, Ia. 50273, Tel. 462-1136

UNITED STATES PUBLIC LAND SURVEY CORNER CERTIFICATE OF

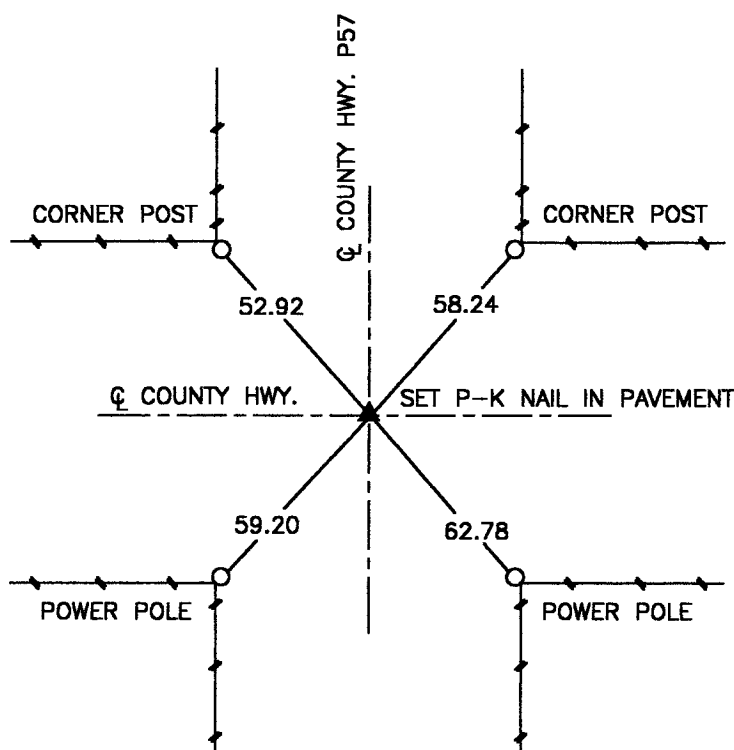
Land Survey Monuments situated in Section 7, Township 77 N, Range 28 W, of the Fifth Principal Meridian, Madison County, Iowa.
 Previously recorded in N.A. in County Recorders Office.
 (book, page, document number, etc.)

(Show reason for preparing this certificate, the evidence and detailed procedures used in establishing the corner positions and monumentation found or placed.)

Monument Description and Remarks: Set P-K nail from ties found in Madison County Engineer's Office.
Position verified from traversing section using found section corners.

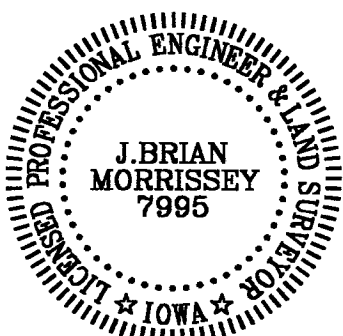
PLAN VIEW

(Show a minimum of three reference ties to durable physical objects, relevant monuments and physical conditions that will enable recovery of the corner.)



NW. COR., SW. 1/4, SEC. 7

NOTE: ALL TIES TO "X" NAILS UNLESS NOTED



I hereby certify that the survey work was completed and this certificate was prepared by me or under my direct personal supervision and that I am a duly Licensed Land Surveyor under the laws of the State of Iowa.

Signature: J. Brian Morrissey Date: 7/7/98
 J. Brian Morrissey

License number 7995.
 My license renewal date is December 31, 1999.