

REC \$ 5.00
AUD \$ _____
R.M.F. \$ 1.00

COMPUTER
RECORDED
COMPARED

FILED NO. 156
BOOK 1 PAGE 670
98 JUL -8 PM 12:45

MICHELLE UTSLER
RECORDER
ADVISOR COURT T. IOWA

Prepared By: J. Brian Morrissey, Morrissey Surveying, 1926 Pammel Park Road, Winterset, Ia. 50275

UNITED STATES PUBLIC LAND SURVEY CORNER CERTIFICATE OF

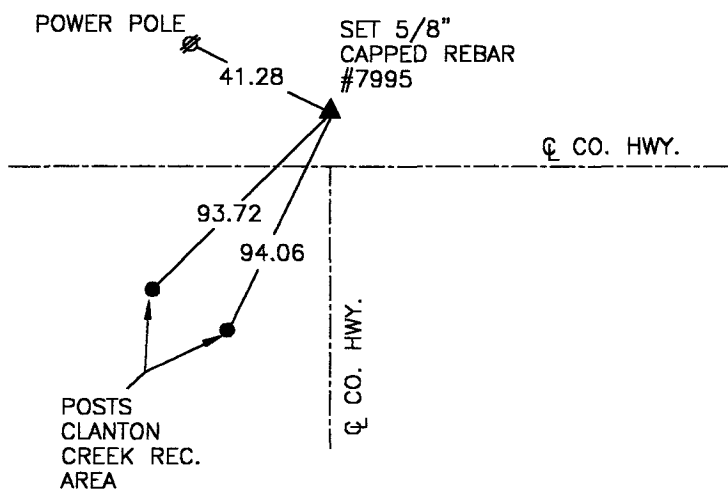
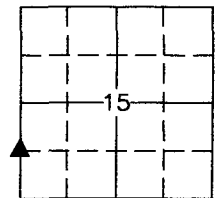
Land Survey Monuments situated in Section 15, Township 74 N, Range 27 W, of the Fifth Principal Meridian, Madison County, Iowa.
Previously recorded in N. A. in County Recorders Office.
(book, page, document number, etc.)

(Show reason for preparing this certificate, the evidence and detailed procedures used in establishing the corner positions and monumentation found or placed.)

Monument Description and Remarks: Set 5/8" capped rebar, #7995, at midpoint between SW. corner of Section and NW. corner of the SW. 1/4 of Section.

PLAN VIEW

(Show a minimum of three reference ties to durable physical objects, relevant monuments and physical conditions that will enable recovery of the corner.)



NW. COR., SW. 1/4, SW. 1/4, SEC. 15

NOTE: ALL TIES TO "X" NAILS UNLESS NOTED



I hereby certify that the survey work was completed and this certificate was prepared by me or under my direct personal supervision and that I am a duly Licensed Land Surveyor under the laws of the State of Iowa.

Signature: J. Brian Morrissey Date: 7/8/98
J. Brian Morrissey

License number 7995.

My license renewal date is December 31, 1999.

240-98-3