

REC \$ 5⁰⁰
AUD \$ _____
R.M.F. \$ 1⁰⁰

COMPUTER
RECORDED
COMPARED

MICHELLE UTSLER
RECORDER
ADAMSON COUNTY, IOWA

Prepared By: J. Brian Morrissey, Morrissey Surveying, 1926 Pammel Park Road, Winterset, Ia. 50273

UNITED STATES PUBLIC LAND SURVEY CORNER CERTIFICATE OF

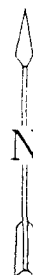
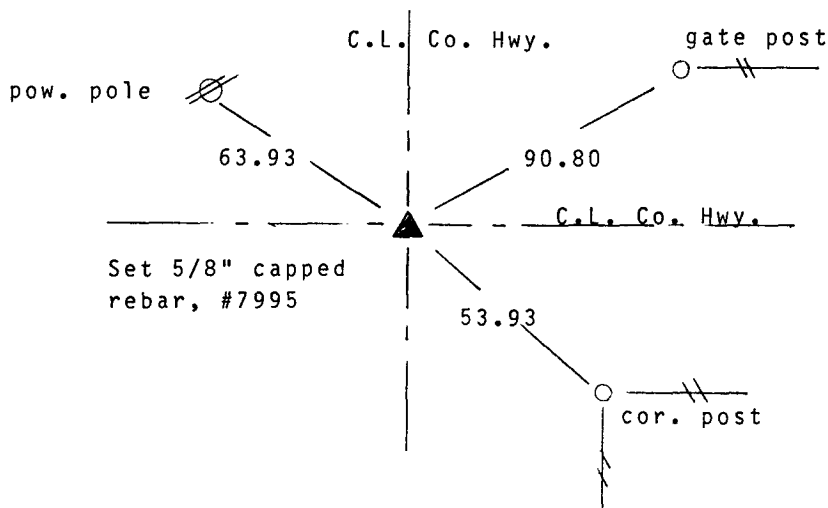
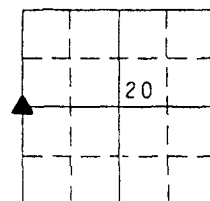
Land Survey Monuments situated in Section 20, Township 74 N, Range 29 W, of the Fifth Principal Meridian, Madison County, Iowa.
Previously recorded in N.A. in County Recorders Office.
(book, page, document number, etc.)

(Show reason for preparing this certificate, the evidence and detailed procedures used in establishing the corner positions and monumentation found or placed.)

Monument Description and Remarks: Set 5/8" capped rebar, #7995, at intersection of
County Highways to south and east, based on road record.

PLAN VIEW

(Show a minimum of three reference ties to durable physical objects, relevant monuments and physical conditions that will enable recovery of the corner.)



NW. Cor., SW. 1/4, Section 20

Note: all ties to "x" nails



I hereby certify that this land surveying document was prepared and the related survey work was performed by me or under my direct personal supervision and that I am a duly licensed Land Surveyor under the laws of the State of Iowa.

Signature: J. Brian Morrissey Date: 7/7/98
J. Brian Morrissey

License number 7995.
My license renewal date is December 31, 1997.