

REC \$ None
AUD \$ _____
R.M.F. \$ _____

COMPUTER
RECORDED
COMPARED

FILED NO. 336

BOOK 1 PAGE 684

98 JUL 20 PM 2:25

MICHELLE UTSLER
RECORDER
MADISON COUNTY, IOWA

Prepared By: J. Brian Morrissey, Madison County Engineer, P.O. Box 152 Winterset, Ia. 50273, Tel. 462-1396

UNITED STATES PUBLIC LAND SURVEY CORNER CERTIFICATE OF

Land Survey Monuments situated in Section 20, Township 76 N, Range 27 W, of the Fifth Principal Meridian, Madison County, Iowa.
Previously recorded in Book 1, Page 411 in County Recorders Office.

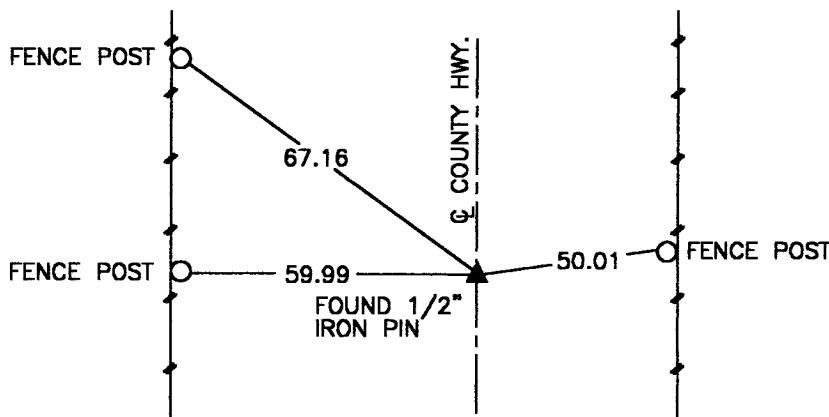
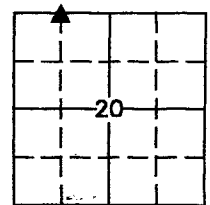
(book, page, document number, etc.)

(Show reason for preparing this certificate, the evidence and detailed procedures used in establishing the corner positions and monumentation found or placed.)

Monument Description and Remarks: Found 1/2" iron pin. Accepted position. Tied after grading of Madison County Highway.

PLAN VIEW

(Show a minimum of three reference ties to durable physical objects, relevant monuments and physical conditions that will enable recovery of the corner.)



NW. COR., NE. 1/4, NW. 1/4, SEC. 20

NOTE: ALL TIES TO "X" NAILS UNLESS NOTED



I hereby certify that the survey work was completed and this certificate was prepared by me or under my direct personal supervision and that I am a duly Licensed Land Surveyor under the laws of the State of Iowa.

Signature: J. Brian Morrissey Date: 7/16/98
J. Brian Morrissey

License number 7995.

My license renewal date is December 31, 1999.