

COMPUTER
 RECORDED
 COMPARED

FILED NO. **312**
 BOOK 1 PAGE 683

98 JUL 17 PM 12:02

REC \$ 5.00
 AUD \$ _____
 R.M.F. \$ 1.00

MICHELLE UTSLER
 RECORDER
 MADISON COUNTY, IOWA

VANCE & HOCHSTETLER, P.C., CONSULTING ENGINEERS, WINTERSSET, IOWA (515) 462-3995
 CHARLES T. VANCE, 110 West Green St., Winterset, Iowa, 50273
 JAMES M HOCHSTETLER, 110 West Green St., Winterset, Iowa 50273

UNITED STATES PUBLIC LAND SURVEY CORNER CERTIFICATE

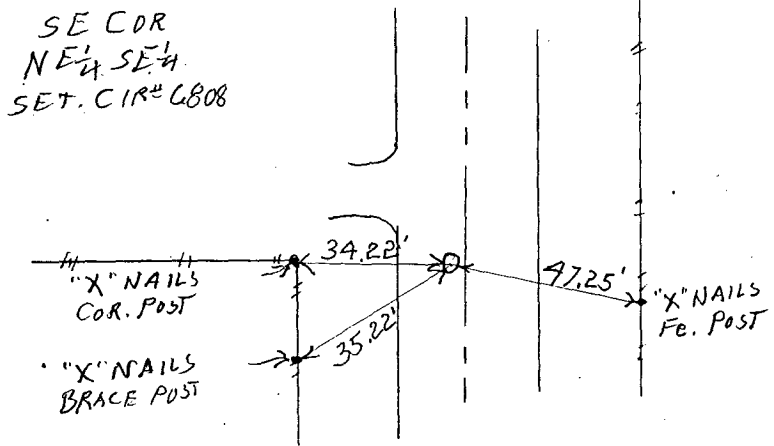
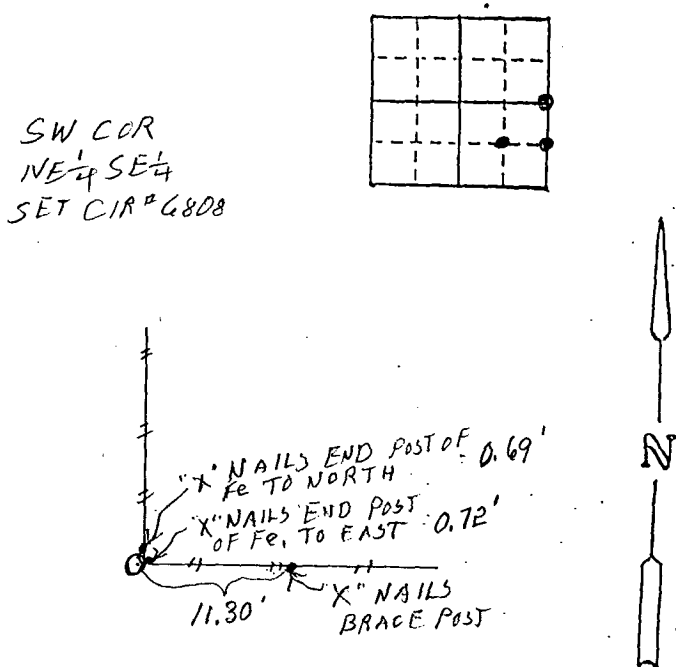
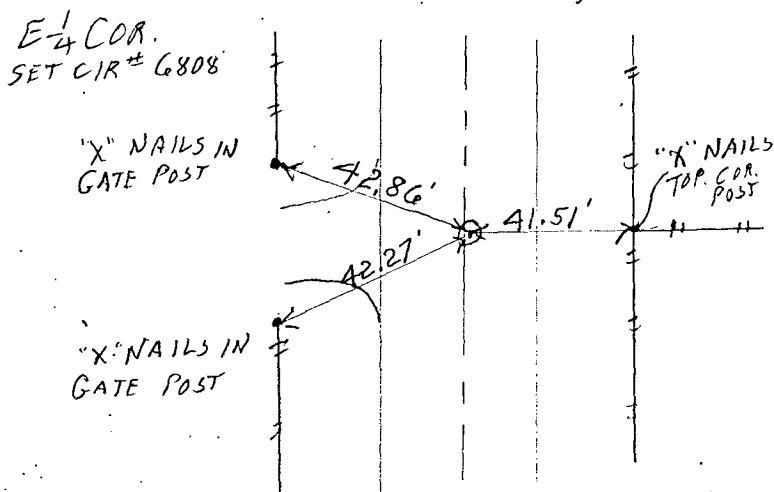
OF
 Land Survey Monuments situated in Section 32, Township 76 N, Range 28 W, of the Fifth Principal Meridian, MADISON County, Iowa.
 Previously recorded in _____ in County Recorder's Office.
 (book, page, document number, etc.)

(Show reason for preparing this certificate, the evidence and detailed procedures used in establishing the the corner positions and monumentation found or placed.)

Monument Description and Remarks: E 1/4 COR. - SET CIR #6808 in line with old established property line fence to East. Culvert had been installed in area and could not find evidence of stone.
SE COR. NE 1/4 SE 1/4 - SET CIR #6808 in line with old established Property line fence
SW COR NE 1/4 SE 1/4 - SET CIR #6808 at old established Property line fence Corner.

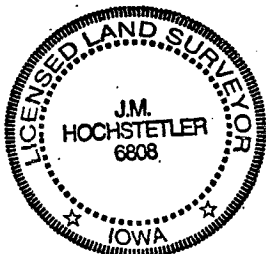
PLAN - VIEW

(Show a minimum of three reference ties to durable physical objects, relevant monuments and physical conditions that will enable recovery of the corner.)



List Corners to be Indexed

Corners	Section	Twp	Range
E 1/4 COR	32	76 N	28 W
SE COR NE 1/4 SE 1/4	32	76 N	28 W
SW COR NE 1/4 SE 1/4	32	76 N	28 W



I hereby certify that this land surveying document was prepared and the related survey work was performed by me or under my direct personal supervision and that I am a duly licensed Land Surveyor under the laws of the State of Iowa.

J.M. Hochstetler
 J.M. HOCHSTETLER
 License number 6808 Date 7/14/98

My license renewal date is December 31, 1999.

Pages or sheets covered by this seal: 1