

REC \$ None  
AUD \$ \_\_\_\_\_  
R.M.F. \$ \_\_\_\_\_

COMPUTER ☒  
RECORDED ☒  
COMPARED ☒

FILED NO. 244  
BOOK 1 PAGE 682  
98 JUL 14 PM 12:30

MICHELLE UTSLER  
RECORDER  
162 N 1036  
MADISON COUNTY, IOWA

Prepared By: J. Brian Morrissey, Madison County Engineer, P.O. Box 152 Winterset, Ia. 50273, Tel. 462-1036

UNITED STATES PUBLIC LAND SURVEY CORNER CERTIFICATE  
OF

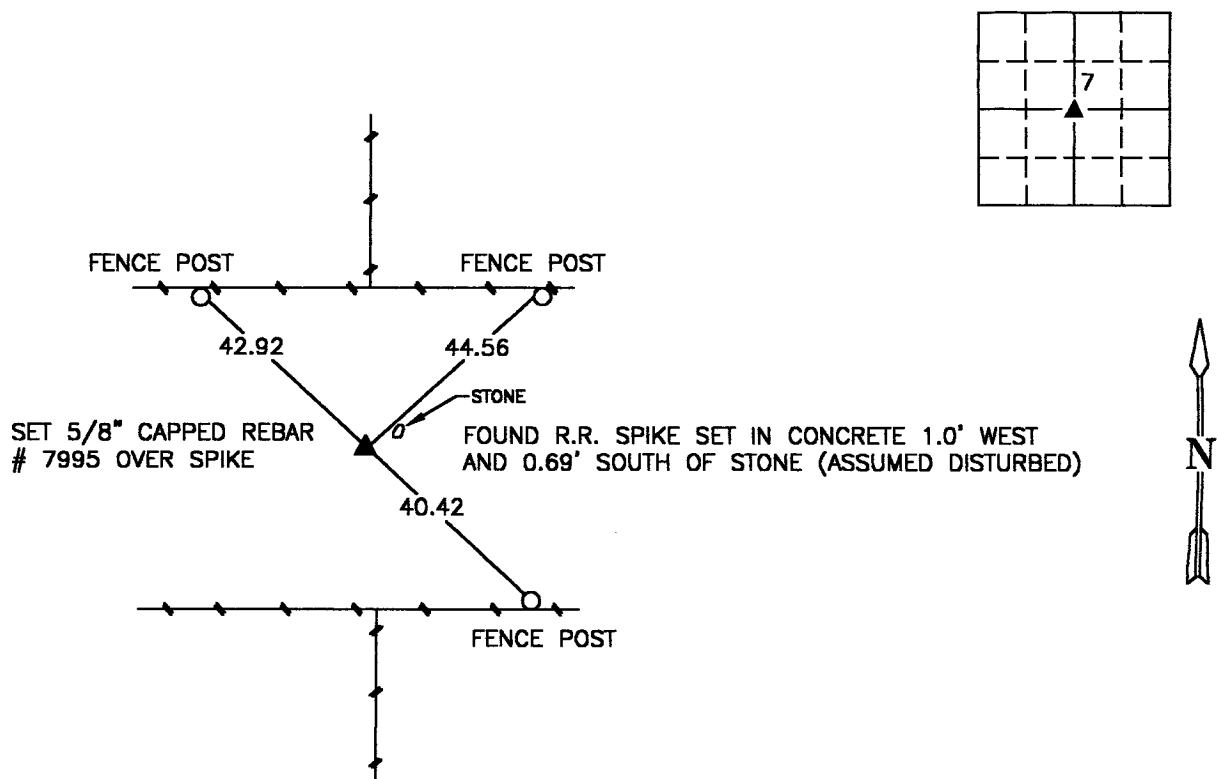
Land Survey Monuments situated in Section 7, Township 77 N, Range 28 W, of the Fifth Principal Meridian, Madison County, Iowa.  
Previously recorded in N.A. in County Records Office.  
(book, page, document number, etc.)

(Show reason for preparing this certificate, the evidence and detailed procedures used in establishing the corner positions and monumentation found or placed.)

Monument Description and Remarks: Found R.R. spike set in concrete 2.0' deep. Set 5/8" rebar over spike.  
Also, found disturbed stone lying flat. Position of R.R. spike verified from traversing section using found section  
corners. Accepted position. Stone assumed disturbed.

PLAN VIEW

(Show a minimum of three reference ties to durable physical objects, relevant monuments and physical conditions that will enable recovery of the corner.)



NW. COR., SE. 1/4, SEC. 7

NOTE: ALL TIES TO "X" NAILS UNLESS NOTED



I hereby certify that the survey work was completed and this certificate was prepared by me or under my direct personal supervision and that I am a duly Licensed Land Surveyor under the laws of the State of Iowa.

Signature: J. Brian Morrissey Date: 7/7/98  
J. Brian Morrissey

License number 7995.  
My license renewal date is December 31, 1999.