

REC \$ None  
AUD \$ \_\_\_\_\_  
R.M.F. \$ \_\_\_\_\_

COMPUTER   
RECORDED   
COMPARED

Prepared By: J. Brian Morrissey, Madison County Engineer, P.O. Box 152 Winterset, Ia. 50273, Tel. 462-1136

# UNITED STATES PUBLIC LAND SURVEY CORNER CERTIFICATE OF

Land Survey Monuments situated in Section 7, Township 77 N, Range 28 W, of the Fifth Principal Meridian, Madison County, Iowa.  
Previously recorded in N.A. in County Records Office.

(book, page, document number, etc.)

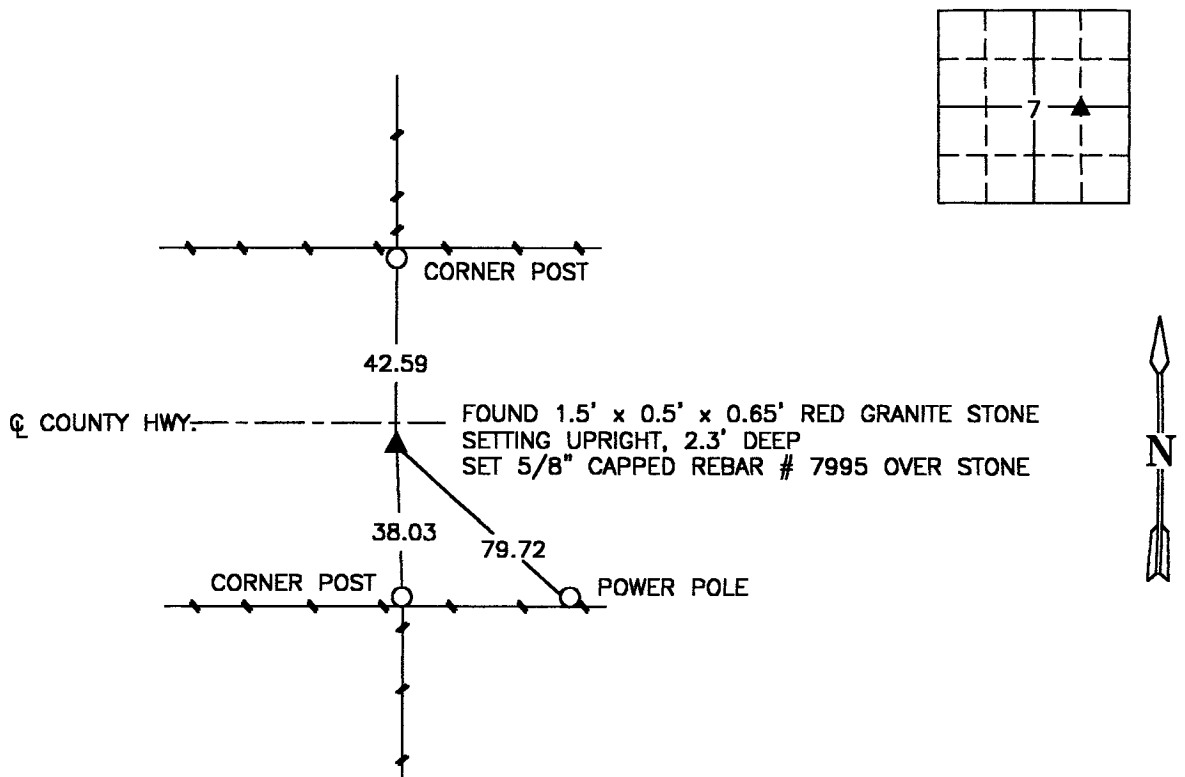
(Show reason for preparing this certificate, the evidence and detailed procedures used in establishing the corner positions and monumentation found or placed.)

Monument Description and Remarks: Found 1.5' x 0.5' x 0.65' red granite stone 2.3' deep, set 5/8" capped rebar #7995 over center of stone. Verified position by traversing section using found section corners.

Accepted position.

## PLAN VIEW

(Show a minimum of three reference ties to durable physical objects, relevant monuments and physical conditions that will enable recovery of the corner.)



NE. COR., NW. 1/4, SE. 1/4, SEC. 7

NOTE: ALL TIES TO "X" NAILS UNLESS NOTED



I hereby certify that the survey work was completed and this certificate was prepared by me or under my direct personal supervision and that I am a duly Licensed Land Surveyor under the laws of the State of Iowa.

Signature: J. Brian Morrissey Date: 7/7/98  
J. Brian Morrissey

License number 7995.  
My license renewal date is December 31, 1999.