

REC \$ 5⁰⁰
AUD \$ _____
R.M.F. \$ 1⁰⁰

COMPUTER
RECORDED
COMPARED

FILED NO. 5310
BOOK 1 PAGE 657
98 JUN 17 PM 12:41

~~Prepared by and return to: Slive-Hattery, Inc. 1801 48th St. Suite 200 West Des Moines, Iowa 50266-6744~~
~~50273 (FIS) 468-3308~~
~~MADISON COUNTY, IOWA~~

MICHELLE UTSLER

UNITED STATES PUBLIC LAND SURVEY CORNER CERTIFICATE

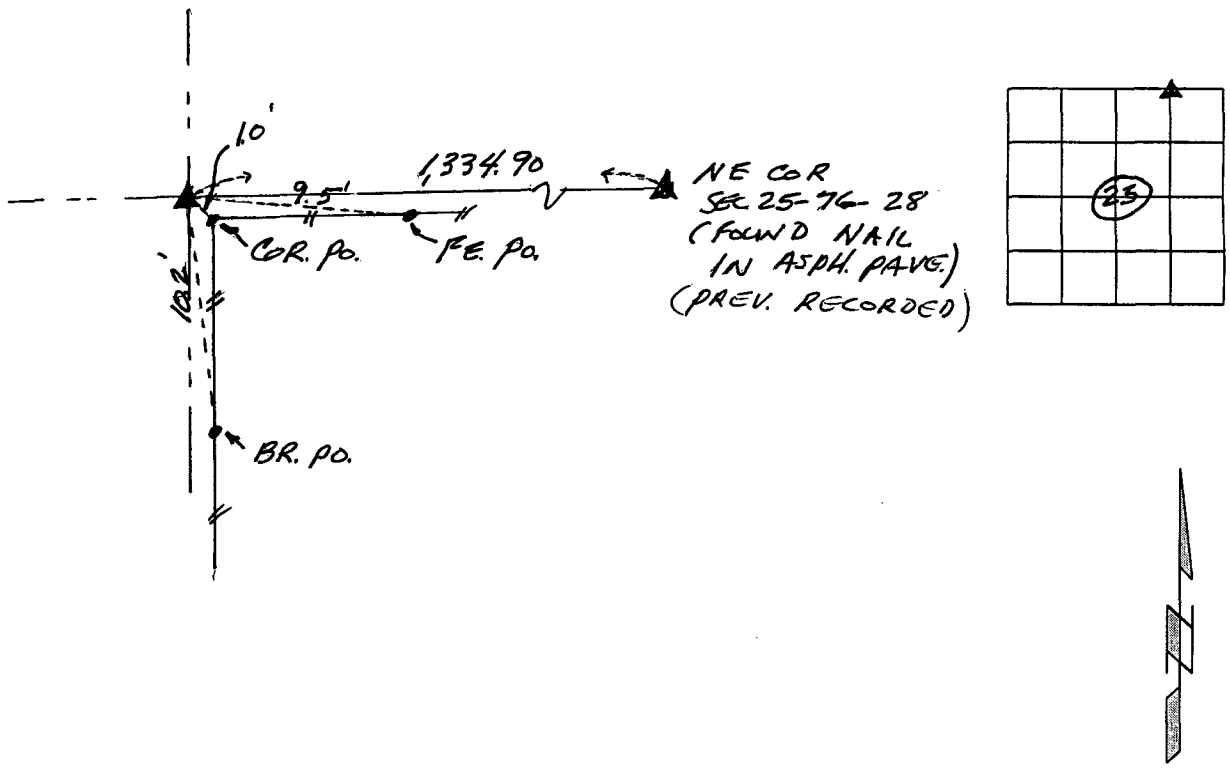
OF

Land Survey Monuments situated in Section 25, Township 76N, Range 28W of the Fifth Principal Meridian, MADISON County, Iowa. Previously recorded in NONE in County Recorders Office. (book, page, document number, ect)
(Show reason for preparing this certificate, the evidence and detailed procedures used in establishing the corner positions and monumentation found or replaced.)

Monument Description and Remarks: FOUND 8" LIMESTONE NEAR CORNER ABST.
LOCATION MATCHES TIES FROM FIELD NOTES BY
P.O.T FOR SURVEY OF HIGHWAY 169

PLAN - VIEW

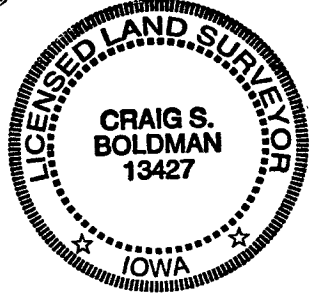
(Show a minimum of three reference ties to durable physical objects, relevant monuments and physical conditions that will enable the recovery of the corner.)



I hereby certify that the survey work was completed and this certificate was prepared by me or under my direct personal supervision and that I am a duly registered land surveyor under the laws of the state of Iowa.

Signature: Craig S. Boldman
Craig Boldman

Date: May 29, 1998 Reg.No. 13427



SEAL

List Corners to be Indexed

Corner	Section	Twp	Range
NW COR	25	76N	28W
NE 1/4 NE 1/4			