

REC \$ 5⁰⁰
AUD \$ _____
R.M.F. \$ 1⁰⁰

COMPUTER
RECORDED
COMPARED

FILED NO. **5309**
BOOK 1 PAGE 656
98 JUN 17 PH 12:40

Prepared by and return to: CRAIG S. BOLDMAN, L.S. 521 W. GREEN ST. WINTERSET, IA 50273 (515) 452-3308
~~Shive-Hattery, Inc. 1601 48th St., Suite 200 West Des Moines, Iowa 50266-6748; Phone (515) 281-1223; 8104~~
MICHILLE LITSLER
ADISON COUNTY, IOWA

UNITED STATES PUBLIC LAND SURVEY CORNER CERTIFICATE

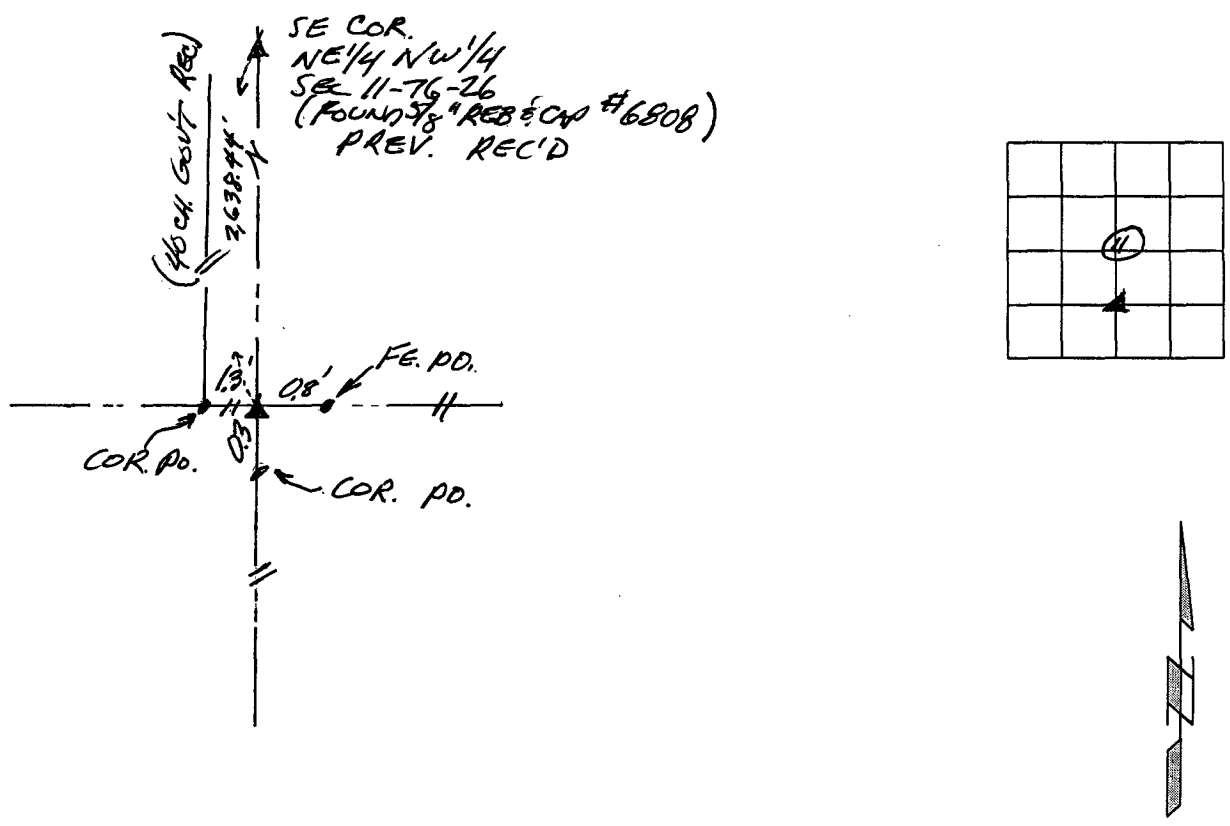
OF

Land Survey Monuments situated in Section 11, Township T6N, Range 26W of the Fifth Principal Meridian, ADISON County, Iowa. Previously recorded in None in County Recorders Office. (book, page, document number, ect)
(Show reason for preparing this certificate, the evidence and detailed procedures used in establishing the corner positions and monumentation found or replaced.)

Monument Description and Remarks: SET 5/8" REBAR w/ YELLOW CAP # 13427
LOCATION AGREES WITH 1/4 SECTION LINE FENCES AND
FIELD NOTES BY COUNTY ENGINEER'S OFFICE TO
ESTABLISH NEW ROAD ALIGNMENT.

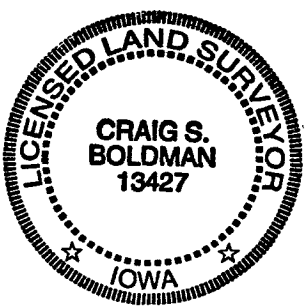
PLAN - VIEW

(Show a minimum of three reference ties to durable physical objects, relevant monuments and physical conditions that will enable the recovery of the corner.)



I hereby certify that the survey work was completed and this certificate was prepared by me or under my direct personal supervision and that I am a duly registered land surveyor under the laws of the state of Iowa.

Signature: Craig S. Boldman
Craig Boldman
Date May 29, 1998 Reg.No. 13427



SEAL

List Corners to be Indexed

Corner	Section	Twp	Range
NW COR 5 1/2 SE 1/4	11	T6N	26W