

REC \$ 5.00

AUD \$

R.M.F. \$ 1.00

FILED NO. 5301

BOOK 1 PAGE 655

98 JUN 16 PM 3:32

COMPUTER

RECORDED

COMPARED

MICHELLE UTSLER
RECORDER
MADISON COUNTY, IOWA

VANCE & HOCHSTETLER, P.C., CONSULTING ENGINEERS, WINTERSSET, IOWA (515) 462-3995
CHARLES T. VANCE, 110 West Green St., Winterset, Iowa, 50273
JAMES M HOCHSTETLER, 110 West Green St., Winterset, Iowa 50273

UNITED STATES PUBLIC LAND SURVEY CORNER CERTIFICATE

Land Survey Monuments situated in Section 30 OF 75 North Township, Range 26 West of the Fifth Principal Meridian, Madison County, Iowa.
Previously recorded in _____ in County Recorder's Office.
(book, page, document number, etc.)

(Show reason for preparing this certificate, the evidence and detailed procedures used in establishing the the corner positions and monumentation found or placed.)

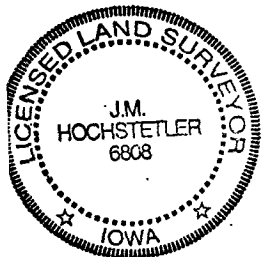
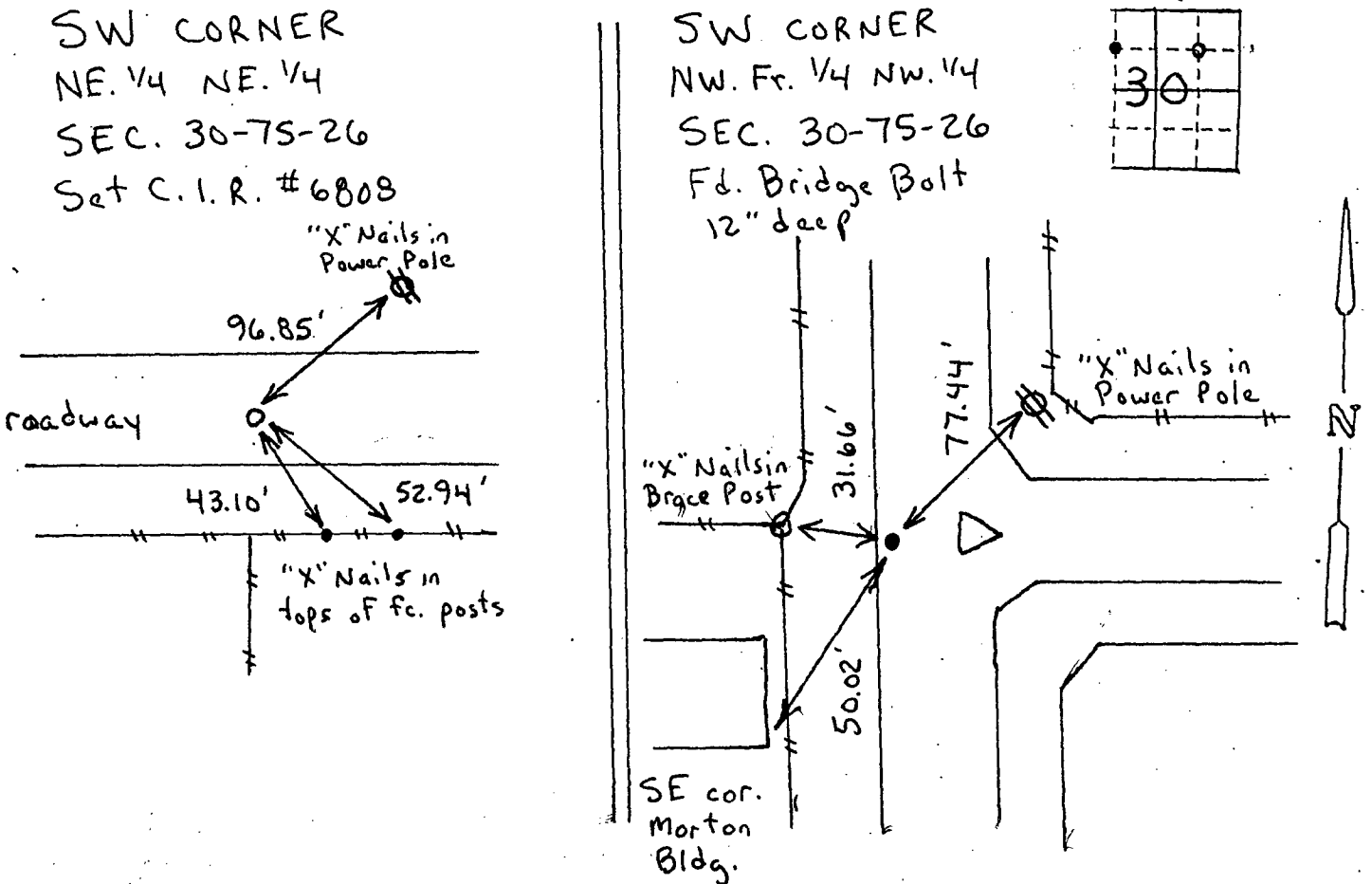
Monument Description and Remarks:

SW cor. NE. 1/4 NE. 1/4 - Set C.I.R. #6808

SW cor NW. Fr. 1/4 NW. 1/4 - Fd. Bridge Bolt 12" deep.

PLAN - VIEW

(Show a minimum of three reference ties to durable physical objects, relevant monuments and physical conditions that will enable recovery of the corner.)



I hereby certify that this land surveying document was prepared and the related survey work was performed by me or under my direct personal supervision and that I am a duly licensed Land Surveyor under the laws of the State of Iowa.

J.M. Hochstetler
J.M. HOCHSTETLER
License number 6808
Date 6/16/98
My license renewal date is December 31, 1999.
Pages or sheets covered by this seal: 1

List Corners to be Indexed

Corners	Section	Twp	Range
SW cor. NE. 1/4 NE. 1/4	30	75N	26W
SW cor. NW. Fr. 1/4 NW. 1/4	30	75N	26W