

MICHELLE UTSLER  
RECORDER  
MADISON COUNTY, IOWA

REC \$ 5<sup>00</sup>  
AUD \$ \_\_\_\_\_  
R.M.F. \$ 1<sup>00</sup>

COMPUTER   
RECORDED   
COMPARED

VANCE & HOCHSTETLER, P.C., CONSULTING ENGINEERS, WINTERSSET, IOWA (515) 462-3995  
CHARLES T. VANCE, 110 West Green St., Winterset, Iowa, 50273  
JAMES M HOCHSTETLER, 110 West Green St., Winterset, Iowa 50273

UNITED STATES PUBLIC LAND SURVEY CORNER CERTIFICATE  
OF

Land Survey Monuments situated in Section 8, Township 76 NORTH, Range 26 WEST, of the Fifth Principal Meridian, MADISON County, Iowa.  
Previously recorded in \_\_\_\_\_ in County Recorder's Office.  
(book, page, document number, etc.)

(Show reason for preparing this certificate, the evidence and detailed procedures used in establishing the the corner positions and monumentation found or placed.)

Monument Description and Remarks:

SW cor. SE. 1/4 NE. 1/4 - Set C.I.R. #6808 at R.O.W. split in line with property line fence to South

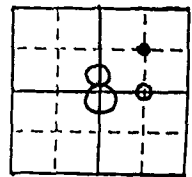
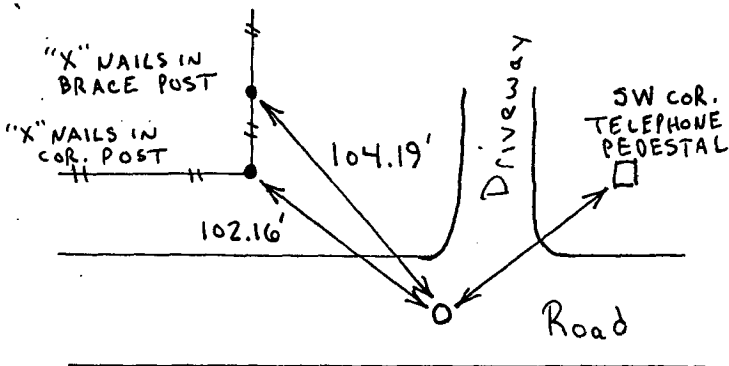
NW cor. SE. 1/4 NE. 1/4 - Set C.I.R. #6808 in line with fence to East and on line between SW cor. SE. 1/4 NE. 1/4 and NW cor.

NE. 1/4 NE. 1/4 (projection from SW cor. SE. NE. through found C.I.R. #5599).

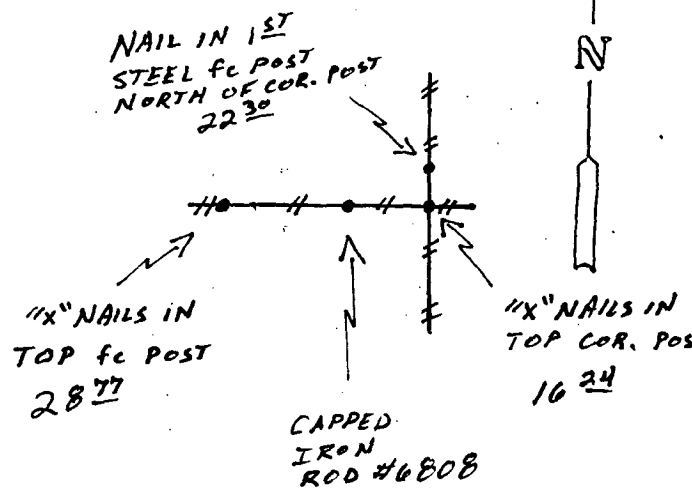
PLAN - VIEW

(Show a minimum of three reference ties to durable physical objects, relevant monuments and physical conditions that will enable recovery of the corner.)

SW CORNER  
SE. 1/4 NE. 1/4  
SEC. 8-76-26  
Set C.I.R. #6808

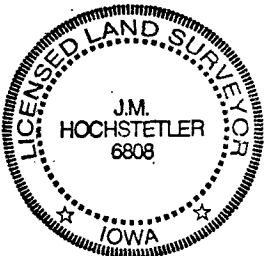


NW CORNER  
SE. 1/4 NE. 1/4  
SEC. 8-76-26  
Set C.I.R. #6808



List Corners to be Indexed

Corners	Section	Twp	Range
SW cor.	8	76 N	26 W.
SE. 1/4 NE. 1/4			
NW cor.	8	76 N	26 W
SE. 1/4 NE. 1/4			



I hereby certify that this land surveying document was prepared and the related survey work was performed by me or under my direct personal supervision and that I am a duly licensed Land Surveyor under the laws of the State of Iowa.

J.M. Hochstetler  
J.M. HOCHSTETLER  
License number 6808  
Date 6/10/98  
My license renewal date is December 31, 1999.  
Pages or sheets covered by this seal: 1