

REC \$ 5.00  
AUD \$ \_\_\_\_\_  
R.M.F. \$ 1.00

COMPUTER   
RECORDED   
COMPARED

VANCE & HOCHSTETLER, P.C., CONSULTING ENGINEERS, WINTERSSET, IOWA (515) 462-3995

CHARLES T. VANCE, 110 West Green St., Winterset, Iowa, 50273

JAMES M HOCHSTETLER, 110 West Green St., Winterset, Iowa 50273

UNITED STATES PUBLIC LAND SURVEY CORNER CERTIFICATE

OF

Land Survey Monuments situated in Section 8, Township 76 North, Range 26 West, of the Fifth Principal Meridian, MADISON County, Iowa. Previously recorded in \_\_\_\_\_ in County Recorder's Office.

(book, page, document number, etc.)

(Show reason for preparing this certificate, the evidence and detailed procedures used in establishing the the corner positions and monumentation found or placed.)

Monument Description and Remarks:

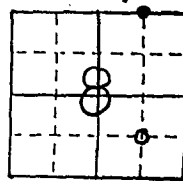
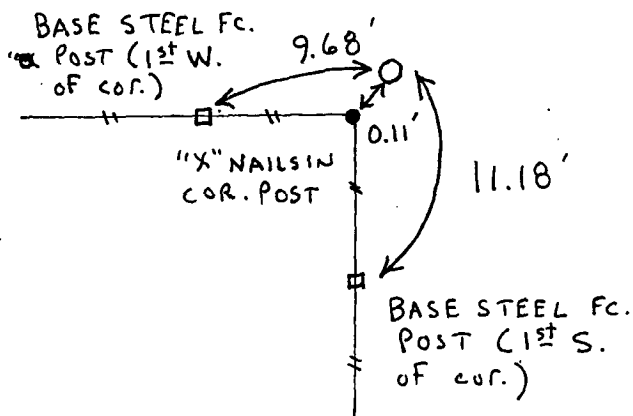
SW cor. NE. 1/4 SE. 1/4 - Set C.I.R. #6808 at existing fence corner.

NW cor. NE. 1/4 NE. 1/4 - Set C.I.R. #6808 at intersection of existing fence to West and line from calc. SW cor. SE. 1/4 NE. 1/4 and through found C.I.R. #5599 North along 40 acre line.

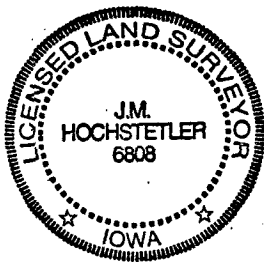
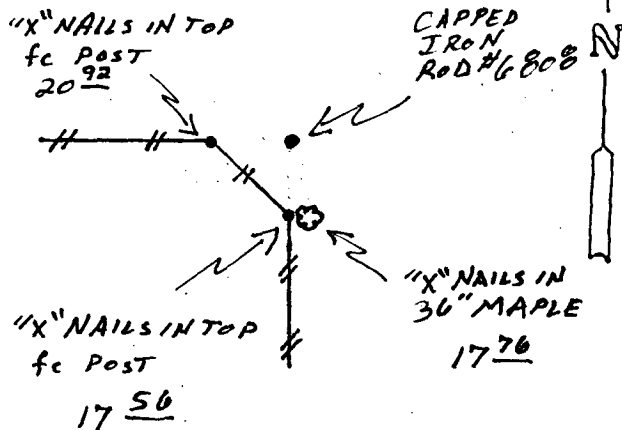
PLAN - VIEW

(Show a minimum of three reference ties to durable physical objects, relevant monuments and physical conditions that will enable recovery of the corner.)

SW CORNER  
NE. 1/4 SE. 1/4  
SEC. 8-76-26  
Set C.I.R. #6808



NW CORNER  
NE. 1/4 NE. 1/4  
SEC. 8-76-26  
Set C.I.R. #6808



I hereby certify that this land surveying document was prepared and the related survey work was performed by me or under my direct personal supervision and that I am a duly Licensed Land Surveyor under the laws of the State of Iowa.

J.M. Hochstetler  
J.M. HOCHSTETLER  
License number 6808 Date 6/10/98  
My license renewal date is December 31, 1999.  
Pages or sheets covered by this seal: 1

List Corners to be Indexed

Corners	Section	Twp	Range
SW cor.	8	76N	26W
NE. 1/4 SE. 1/4			
NW cor.	8	76N	26W
NE. 1/4 NE. 1/4			