

MICHELLE UTSLER
RECORDER
MADISON COUNTY, IOWA

REC \$ 5⁰⁰
AUD \$
R.M.F. \$ 1⁰⁰

COMPUTER
RECORDED
COMPARED

Prepared By: J. Brian Morrissey, Morrissey Surveying, 1926 Pammel Park Road, Winterset, Ia. 50273, Tel. (515) 462-2186

UNITED STATES PUBLIC LAND SURVEY CORNER CERTIFICATE OF

Land Survey Monuments situated in Section 34, Township 77 N, Range 27 W, of the Fifth Principal Meridian, Madison County, Iowa.
Previously recorded in N.A. in County Recorders Office.

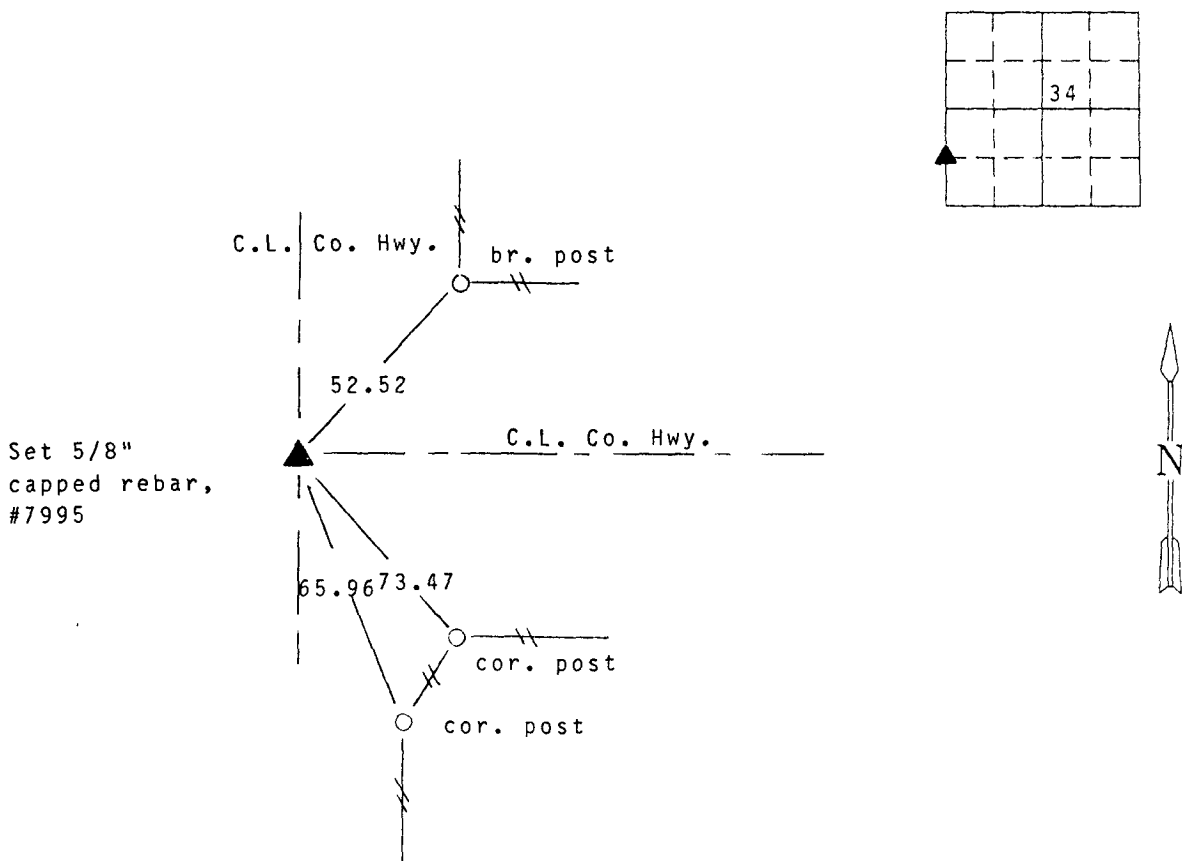
(book, page, document number, etc.)

(Show reason for preparing this certificate, the evidence and detailed procedures used in establishing the corner positions and monumentation found or placed.)

Monument Description and Remarks: Found nail. Replaced with 5/8" capped rebar, #7995.
Distance and bearing north and south checked reasonably close to SW. cor. and W. quarter
of Section.

PLAN VIEW

(Show a minimum of three reference ties to durable physical objects, relevant monuments and physical conditions that will enable recovery of the corner.)



NW. Cor., SW. 1/4, SW. 1/4, Section 34

Note: all ties to "x" nails



I hereby certify that this land surveying document was prepared and the related survey work was performed by me or under my direct personal supervision and that I am a duly licensed Land Surveyor under the laws of the State of Iowa.

Signature: J. Brian Morrissey Date: 7/7/98
J. Brian Morrissey

License number 7995.
My license renewal date is December 31, 1997.