

REC \$ 5.00  
AUD \$ \_\_\_\_\_  
R.M.F. \$ 1.50

COMPUTER   
RECORDED   
COMPARED

FILED NO. 42  
BOOK 1 PAGE 661  
98 JUL -1 PM 3:48  
MICHELLE UTSLER  
RECORDER  
MADISON COUNTY, IOWA

VANCE & HOCHSTETLER, P.C., CONSULTING ENGINEERS, WINTERSSET, IOWA (515) 462-3995  
CHARLES T. VANCE, 110 West Green St., Winterset, Iowa, 50273  
JAMES M HOCHSTETLER, 110 West Green St., Winterset, Iowa 50273

UNITED STATES PUBLIC LAND SURVEY CORNER CERTIFICATE  
OF

Land Survey Monuments situated in Section 11, Township 77 North, Range  
26 West, of the Fifth Principal Meridian, Madison County, Iowa.  
Previously recorded in \_\_\_\_\_ in County Recorder's Office.  
(book, page, document number, etc.)

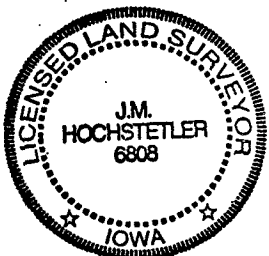
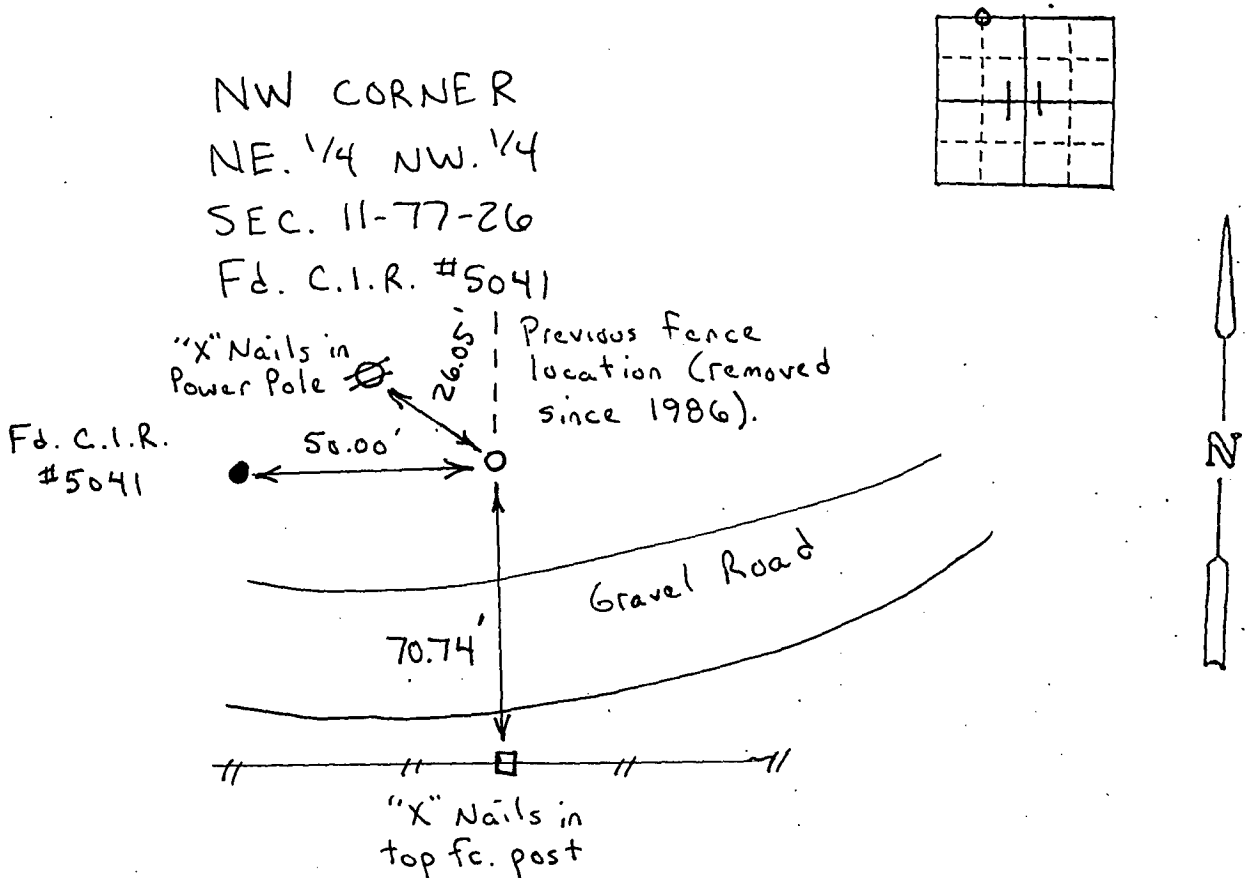
(Show reason for preparing this certificate, the evidence and detailed procedures used in establishing the the corner positions and monumentation found or placed.)

Monument Description and Remarks:

NW cor. NE. 1/4 NW. 1/4 - Fd. C.I.R. #5041 (originally set in 1986.)  
at existing fence corner.

PLAN - VIEW

(Show a minimum of three reference ties to durable physical objects, relevant monuments and physical conditions that will enable recovery of the corner.)



I hereby certify that this land surveying document was prepared and the related survey work was performed by me or under my direct personal supervision and that I am a duly licensed Land Surveyor under the laws of the State of Iowa.

J.M. Hochstetler  
J.M. HOCHSTETLER  
License number 6808  
Date 6/18/98  
My license renewal date is December 31, 1999.  
Pages or sheets covered by this seal: 1

List Corners to be Indexed

| Corners         | Section | Twp | Range |
|-----------------|---------|-----|-------|
| NW cor.         | 11      | 77N | 26W   |
| NE. 1/4 NW. 1/4 |         |     |       |