

REC \$ 5.00  
AUD \$ \_\_\_\_\_  
R.M.F. \$ 1.00

COMPUTER   
RECORDED   
COMPARED

VANCE & HOCHSTETLER, P.C., CONSULTING ENGINEERS, WINTERSSET, IOWA (515) 462-3995  
CHARLES T. VANCE, 110 West Green St., Winterset, Iowa, 50273  
JAMES M HOCHSTETLER, 110 West Green St., Winterset, Iowa 50273

UNITED STATES PUBLIC LAND SURVEY CORNER CERTIFICATE

Land Survey Monuments situated in Section 3 OF 3 Township 75 North, Range 26 West, of the Fifth Principal Meridian, Madison County, Iowa.  
Previously recorded in \_\_\_\_\_ in County Recorder's Office.  
(book, page, document number, etc.)

(Show reason for preparing this certificate, the evidence and detailed procedures used in establishing the the corner positions and monumentation found or placed.)

Monument Description and Remarks:

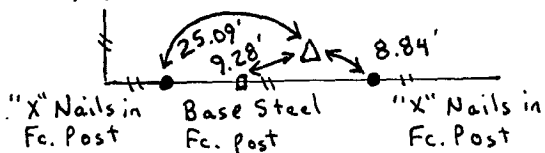
NW cor. SW. 1/4 NE. 1/4 - Fd. C.I.R. #6808

NE cor. SE. 1/4 NE. 1/4 - Fd. C.I.R. #5041

PLAN - VIEW

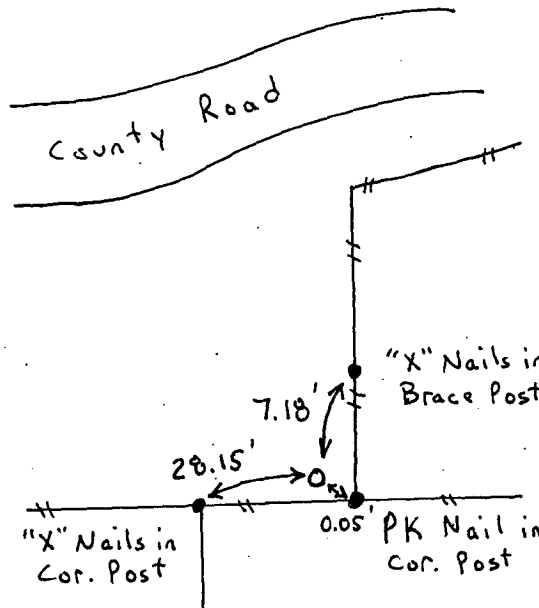
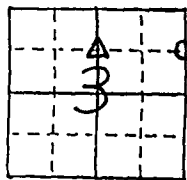
(Show a minimum of three reference ties to durable physical objects, relevant monuments and physical conditions that will enable recovery of the corner.)

NW CORNER  
SW. 1/4 NE. 1/4  
SEC. 3-75-26  
Fd. C.I.R. #6808

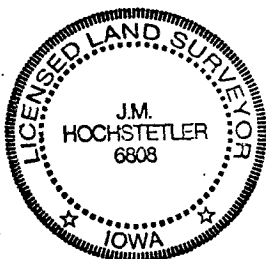
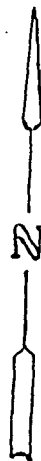


County Road

NE CORNER  
SE. 1/4 NE. 1/4  
SEC. 3-75-26  
Fd. C.I.R. #5041



County Road



I hereby certify that this land surveying document was prepared and the related survey work was performed by me or under my direct personal supervision and that I am a duly licensed Land Surveyor under the laws of the State of Iowa.

*J.M. Hochstetler*  
J.M. HOCHSTETLER

License number 6808

Date 6/15/98

My license renewal date is December 31, 1999.

Pages or sheets covered by this seal: 1

List Corners to be Indexed

| Corners                    | Section | Twp | Range |
|----------------------------|---------|-----|-------|
| NW cor.<br>SW. 1/4 NE. 1/4 | 3       | 75N | 26W   |
| NE cor.<br>SE. 1/4 NE. 1/4 | 3       | 75N | 26W   |