

REC \$ 5<sup>00</sup>  
AUD \$ \_\_\_\_\_  
R.M.F. \$ 1<sup>00</sup>

COMPUTER   
RECORDED   
COMPARED

VANCE & HOCHSTETLER, P.C., CONSULTING ENGINEERS, WINTERSSET, IOWA (515) 462-3995  
CHARLES T. VANCE, 110 West Green St., Winterset, Iowa, 50273  
JAMES M HOCHSTETLER, 110 West Green St., Winterset, Iowa 50273

UNITED STATES PUBLIC LAND SURVEY CORNER CERTIFICATE

Land Survey Monuments situated in Section 18 OF 75 N Township, Range 27 W of the Fifth Principal Meridian, MADISON County, Iowa.  
Previously recorded in \_\_\_\_\_ in County Recorder's Office.  
(book, page, document number, etc.)

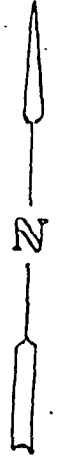
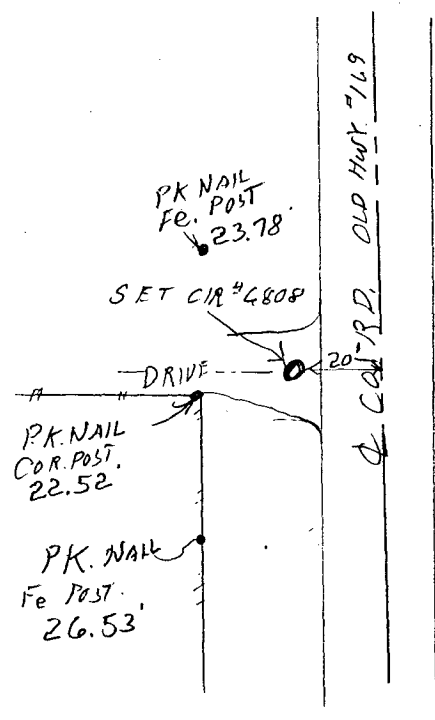
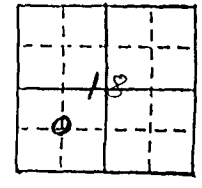
(Show reason for preparing this certificate, the evidence and detailed procedures used in establishing the the corner positions and monumentation found or placed.)

Monument Description and Remarks: SET CIR #6808 AT MID POINT BETWEEN  
NW CORNER NE 1/4 SW 1/4 SET BY BLUNKE AND OLD PROPERTY LINE  
FENCE CORNER AT SW CORNER SE 1/4 SW 1/4. ALSO SET 20 FEET  
WEST OF OLD HIGHWAY #169.

PLAN - VIEW

(Show a minimum of three reference ties to durable physical objects, relevant monuments and physical conditions that will enable recovery of the corner.)

SW COR  
NE 1/4 SW 1/4  
SEC. 18-75-27  
SET CIR #6808



List Corners to be Indexed

Corners	Section	Twp	Range
SW COR NE 1/4 SW 1/4	18	75N	27W

I hereby certify that this land surveying document was prepared and the related survey work was performed by me or under my direct personal supervision and that I am a duly licensed Land Surveyor under the laws of the State of Iowa.

J.M. HOCHSTETLER  
License number 6808 Date 6/1/98  
My license renewal date is December 31, 1999.  
Pages or sheets covered by this seal: 1