

MICHELLE UTSLER
RECORDER
MADISON COUNTY, IOWA

REC \$ 5⁰⁰
AND \$ _____
R.M.F. \$ 1⁰⁰

COMPUTER
RECORDED
COMPARED

VANCE & HOCHSTETLER, P.C. CONSULTING ENGINEERS, WINTERSSET, IOWA (515)462-3995

CHARLES T. VANCE, 110 West Green St., Winterset, Iowa 50273
JAMES M. HOCHSTETLER, 110 West Green St., Winterset, Iowa 50273

SLSI 9-94

UNITED STATES PUBLIC LAND SURVEY CORNER CERTIFICATE

OF
Land Survey Monuments situated in Section 23 Township 74 N, Range 28 W, of the Fifth Principal Meridian, MADISON County, Iowa.
Previously recorded in _____ in County Recorder's Office.

(book, page, document number, etc.)

(Show reason for preparing this certificate, the evidence and detailed procedures used in establishing the corner positions and monumentation found or placed.)

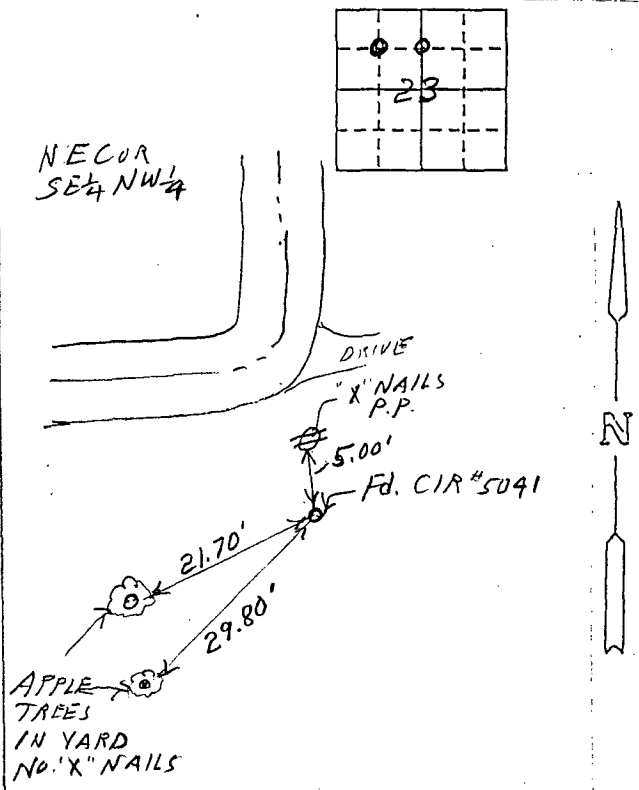
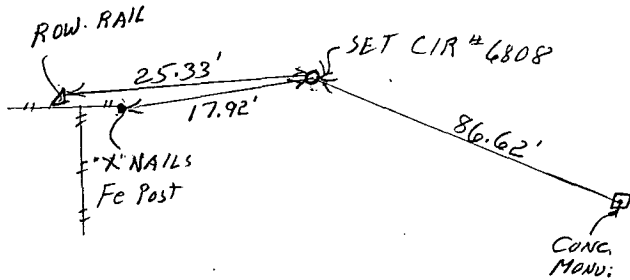
Monument Description and Remarks: NE COR SE 1/4 NW 1/4 - Found CIR #5041 shown on previous survey.

NW COR. SE 1/4 NW 1/4 - Set CIR #6808 based on right-of-way plats and Hwy #169 Plans - Could not find a concrete monument or right-of-way rail at the site which matched measurements shown on plats

PLAN - VIEW

(Show a minimum of three reference ties to durable physical objects, relevant monuments and physical conditions that will enable recovery of the corner.)

NW COR
SE 1/4 NW 1/4



List Corners to be Indexed

Corners	Section	Twp	Range
NW COR SE 1/4 NW 1/4	23	74N	28W
NE COR SE 1/4 NW 1/4	23	74N	28W

I hereby certify that this land surveying document was prepared and the related survey work was performed by me or under my direct personal supervision and that I am a duly licensed Land Surveyor under the laws of the State of Iowa.

J.M. Hochstetler
J.M. HOCHSTETLER
License number 6808 Date 5/7/98
My license renewal date is December 31, 1999.
Pages or sheets covered by this seal: 1

