

MICHELLE UTSLER
RECORDER
MADISON COUNTY, IOWA

REC \$ 5.00
AUD \$ _____
R.M.F. \$ 1.00

COMPUTER
RECORDED
COMPARED

VANCE & HOCHSTETLER, P.C. CONSULTING ENGINEERS, WINTERSSET, IOWA (515)462-3995

CHARLES T. VANCE, 110 West Green St., Winterset, Iowa 50273
JAMES M. HOCHSTETLER, 110 West Green St., Winterset, Iowa 50273

SLSI 9-94

UNITED STATES PUBLIC LAND SURVEY CORNER CERTIFICATE

OF

Land Survey Monuments situated in Section 23, Township 74 N, Range 28 W, of the Fifth Principal Meridian, MADISON County, Iowa. Previously recorded in _____ in County Recorder's Office.

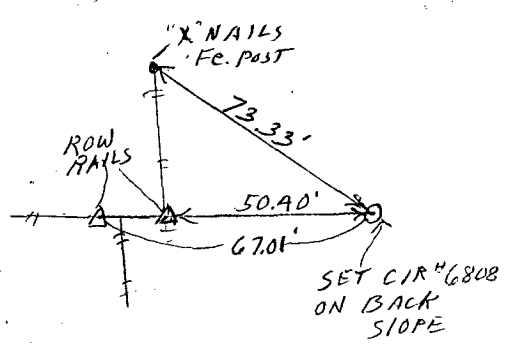
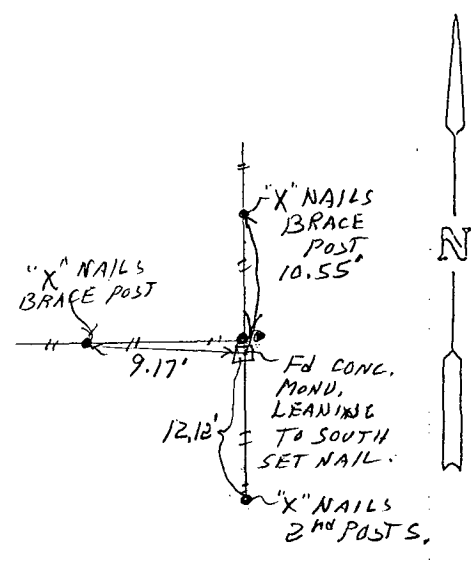
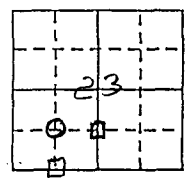
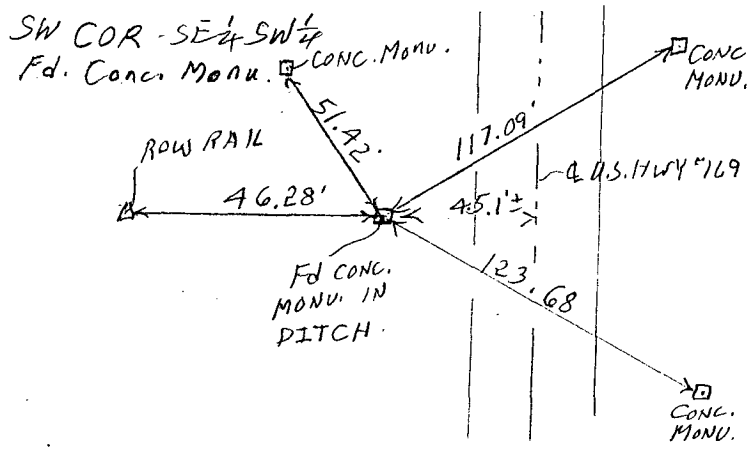
(book, page, document number, etc.)

(Show reason for preparing this certificate, the evidence and detailed procedures used in establishing the corner positions and monumentation found or placed.)

Monument Description and Remarks: SW Cor SE 1/4 SW 1/4 - Found IA. DOT Concrete Monument.
NW Cor SE 1/4 SW 1/4 - Set CIR # 6808 based on Hwy 169 right-of-way plats, road plans and ROW. Rails Found.
SE Cor. NE 1/4 SW 1/4 - Found IA. DOT Concrete Monument at property line fence corner.

PLAN - VIEW

(Show a minimum of three reference ties to durable physical objects, relevant monuments and physical conditions that will enable recovery of the corner.)



List Corners to be Indexed

Corners	Section	Twp	Range
SW COR SE 1/4 SW 1/4	23	74 N	28 W
NW COR SE 1/4 SW 1/4	23	74 N	28 W
SE COR NE 1/4 SW 1/4	23	74 N	28 W

I hereby certify that this land surveying document was prepared and the related survey work was performed by me or under my direct personal supervision and that I am a duly Licensed Land Surveyor under the laws of the State of Iowa.

J.M. Hochstetler
J.M. HOCHSTETLER
License number 6808
Date 5/7/98
My license renewal date is December 31, 1999.
Pages or sheets covered by this seal: 1

