

COMPUTER   
 RECORDED   
 COMPARED

FILED NO. **3947**  
 BOOK 1 PAGE 612

98 APR 14 AM 9:36

REC \$ 5.00  
 AUD \$ \_\_\_\_\_  
 R.M.F. \$ 1.00

MICHELLE UTSLER  
 RECORDER  
 MADISON COUNTY, IOWA

VANCE & HOCHSTETLER, P.C., CONSULTING ENGINEERS, WINTERSSET, IOWA (515) 462-3995  
 CHARLES T. VANCE, 110 West Green St., Winterset, Iowa, 50273  
 JAMES M HOCHSTETLER, 110 West Green St., Winterset, Iowa 50273

UNITED STATES PUBLIC LAND SURVEY CORNER CERTIFICATE

OF  
 Land Survey Monuments situated in Section 21, Township 74 North, Range Z6 West, of the Fifth Principal Meridian, Madison County, Iowa.  
 Previously recorded in \_\_\_\_\_ in County Recorder's Office.  
 (book, page, document number, etc.)

(Show reason for preparing this certificate, the evidence and detailed procedures used in establishing the the corner positions and monumentation found or placed.)

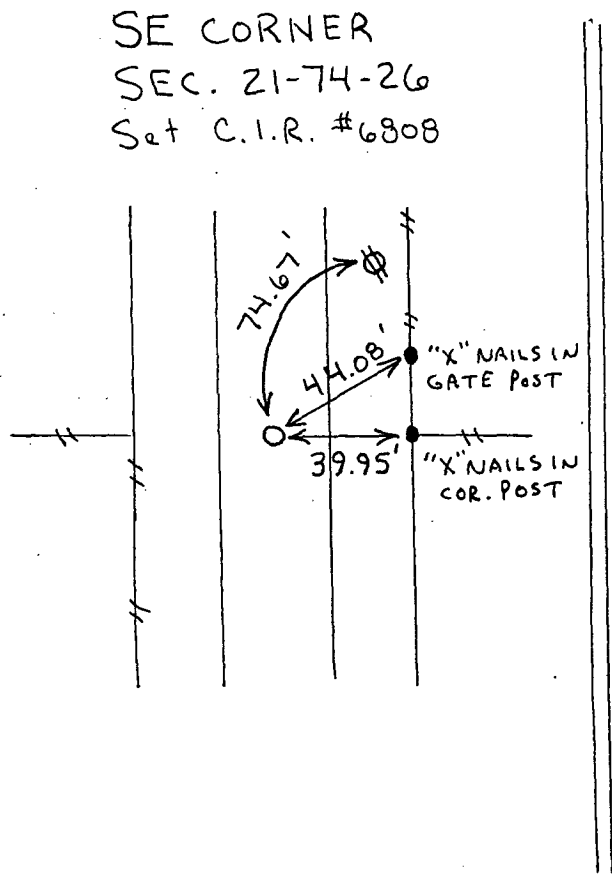
Monument Description and Remarks:

SE cor. - Set C.I.R. #6808 at R.O.W. split in line with East & West property line fences.  
NE cor. SE 1/4 SE 1/4 - Set C.I.R. #6808 on line between E 1/4 cor. & SE cor. and 22' N. of South R.O.W. fence of abandoned road going East (as shown on 1957 county Road plans). Could not find bolt set at this point by Hardy in 1956.

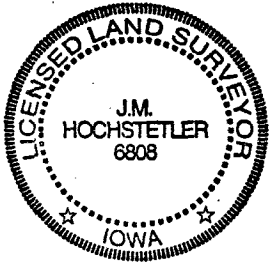
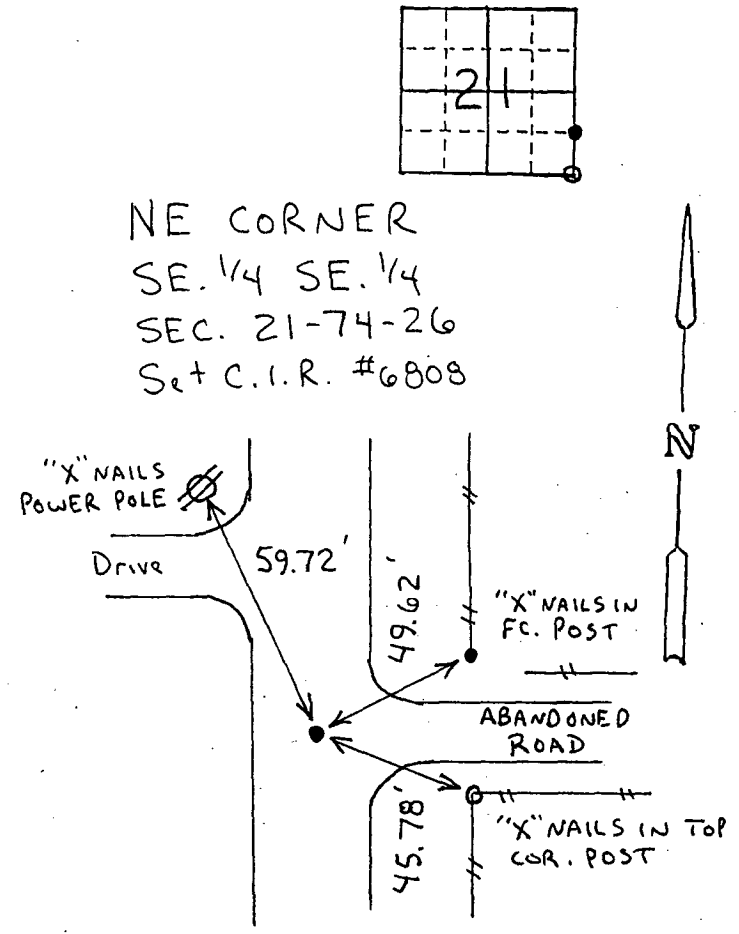
PLAN - VIEW

(Show a minimum of three reference ties to durable physical objects, relevant monuments and physical conditions that will enable recovery of the corner.)

SE CORNER  
 SEC. 21-74-26  
 Set C.I.R. #6808



NE CORNER  
 SE 1/4 SE 1/4  
 SEC. 21-74-26  
 Set C.I.R. #6808



I hereby certify that this land surveying document was prepared and the related survey work was performed by me or under my direct personal supervision and that I am a duly licensed Land Surveyor under the laws of the State of Iowa.  
J.M. Hochstetler  
 J.M. HOCHSTETLER  
 License number 6808 Date 4/9/98  
 My license renewal date is December 31, 1999.  
 Pages or sheets covered by this seal: 1

List Corners to be Indexed

Corners	Section	Twp	Range
SE cor.	21	74N	26W
NE cor.	21	74N	26W
SE 1/4 SE 1/4			