

REC 5<sup>0</sup>  
AUD \$  
R.M.F. \$

COMPUTER ✓  
RECORDED ✓  
COMPARED ✓

FILED NO. 4615  
BOOK 1 PAGE 626  
98 MAY 21 PM 12:46

Prepared By: J. Brian Morrissey, Morrissey Surveying, 1926 Pammel Park Road, Winterset, Ia. 50273, Tel. 688-462-2166  
MICHELLE UTSLER  
RECORDED  
MADISON COUNTY, IOWA

# UNITED STATES PUBLIC LAND SURVEY CORNER CERTIFICATE OF

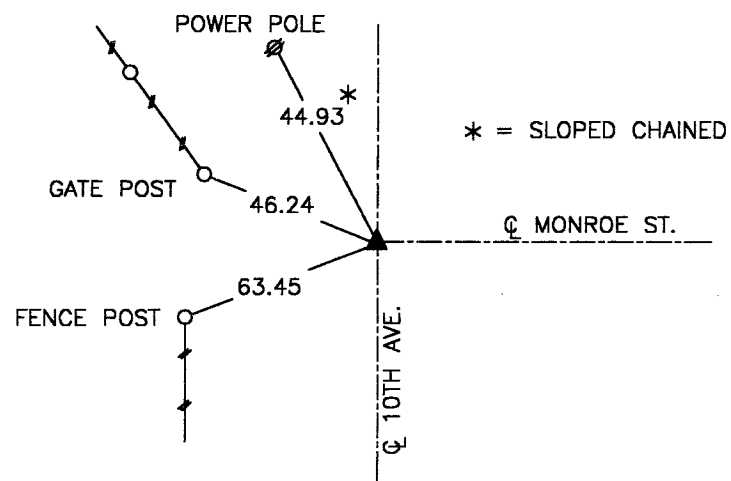
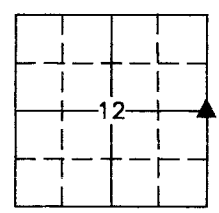
Land Survey Monuments situated in Section 12, Township 75 N, Range 26 W, of the Fifth Principal Meridian, Madison County, Iowa. Previously recorded in N. A. in County Recorders Office.  
(book, page, document number, etc.)

(Show reason for preparing this certificate, the evidence and detailed procedures used in establishing the corner positions and monumentation found or placed.)

Monument Description and Remarks: Found 5/8" capped iron pin #3754 (Hiller), previously logged by Warren County Engineer's office. Accepted position.

## PLAN VIEW

(Show a minimum of three reference ties to durable physical objects, relevant monuments and physical conditions that will enable recovery of the corner.)



NE. COR., SE. 1/4, SEC. 12

NOTE: ALL TIES TO "X" NAILS UNLESS NOTED



I hereby certify that the survey work was completed and this certificate was prepared by me or under my direct personal supervision and that I am a duly Licensed Land Surveyor under the laws of the State of Iowa.

Signature: J. Brian Morrissey Date: 5/20/98  
J. Brian Morrissey

License number 7995.  
My license renewal date is December 31, 1999.