

REC \$ 5⁰⁰
AUD \$ _____
R.M.F. \$ 1⁰⁰

FILED NO. 3421
COMPUTER
RECORDED BOOK 1 PAGE 605
COMPARED 98 MAR 12 PM 1:25

Prepared By: J. Brian Morrissey, Morrissey Surveying, 1926 Pammel Park Road, Winterset, Ia. 50273. RECORDED 462-2166
MADISON COUNTY, IOWA

UNITED STATES PUBLIC LAND SURVEY CORNER CERTIFICATE OF

Land Survey Monuments situated in Section 25, Township 76 N, Range 27 W, of the Fifth Principal Meridian, Madison County, Iowa.
Previously recorded in _____ N. A. _____ in County Recorders Office.

(book, page, document number, etc.)

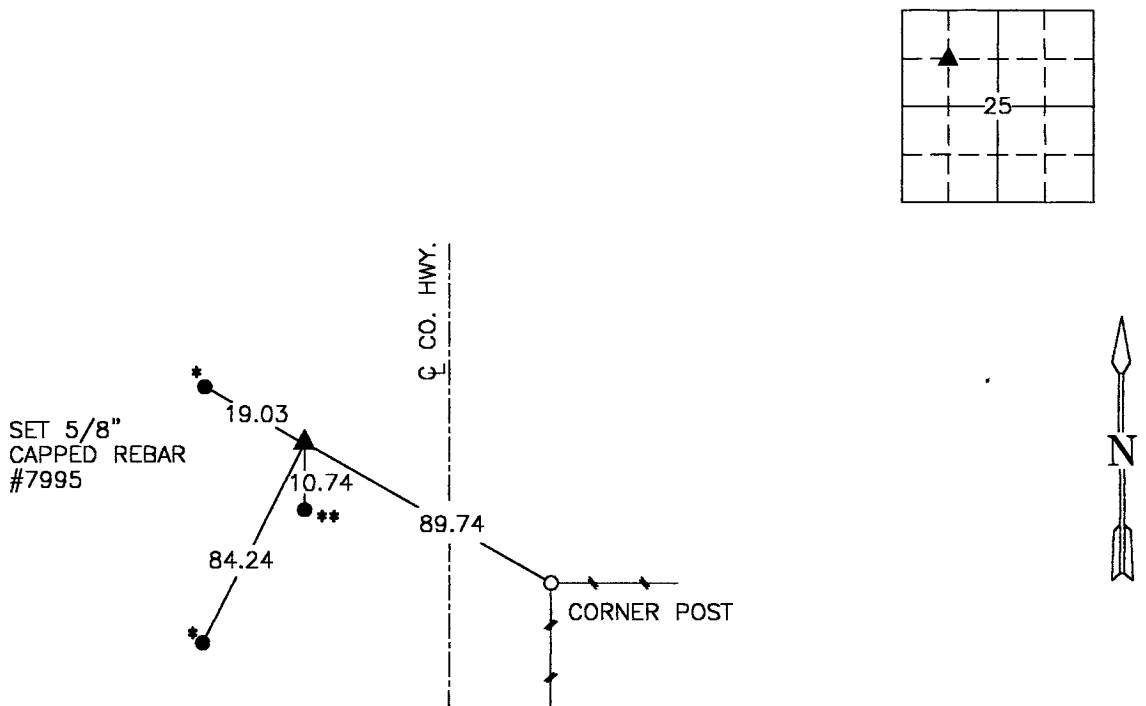
(Show reason for preparing this certificate, the evidence and detailed procedures used in establishing the corner positions and monumentation found or placed.)

Monument Description and Remarks: Set 5/8" capped rebar, #7995 at mathematical intersection of Quarter Section using found or established Quarter Section corners. Position checked with I.D.O.T. R.O.W. monuments to east.

I.D.O.T. Section Corner to South not accepted.

PLAN VIEW

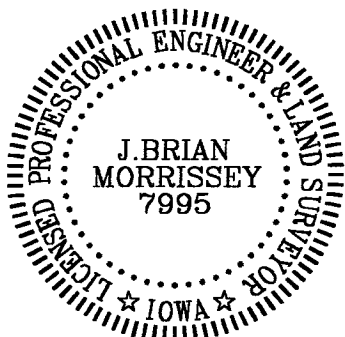
(Show a minimum of three reference ties to durable physical objects, relevant monuments and physical conditions that will enable recovery of the corner.)



- ** I.D.O.T. LAND CORNER (DISC.)
- * I.D.O.T. R.O.W. - MONUMENT

NW. COR., SE. 1/4, NW. 1/4, SEC. 25

NOTE: ALL TIES TO "X" NAILS UNLESS NOTED



I hereby certify that the survey work was completed and this certificate was prepared by me or under my direct personal supervision and that I am a duly Licensed Land Surveyor under the laws of the State of Iowa.

Signature: J. Brian Morrissey Date: 3/12/98
J. Brian Morrissey

License number 7995.

My license renewal date is December 31, 1999.

234-98-6