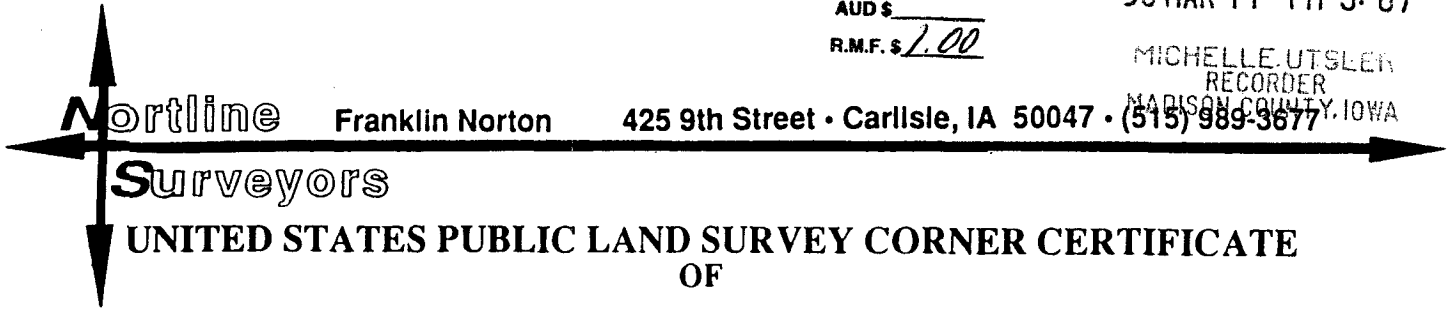


COMPUTER
 RECORDED
 COMPARED
 REC \$ 5.00
 AUD \$ _____
 R.M.F. \$ 1.00

FILED NO: **3403**
 BOOK 1 PAGE 599
 98 MAR 11 PM 3:07
 MICHELLE UTSLER
 RECORDER
 MADISON COUNTY, IOWA



UNITED STATES PUBLIC LAND SURVEY CORNER CERTIFICATE OF

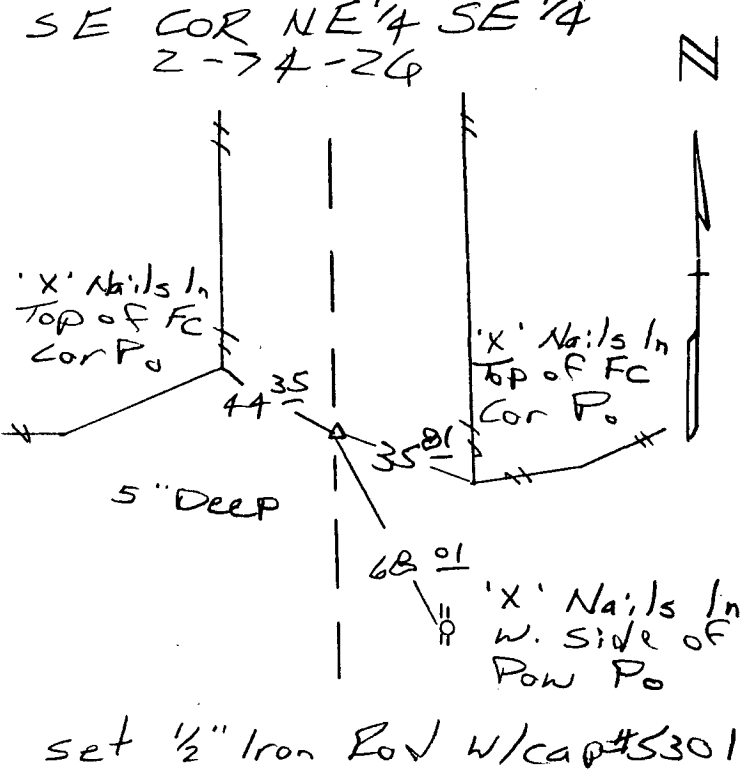
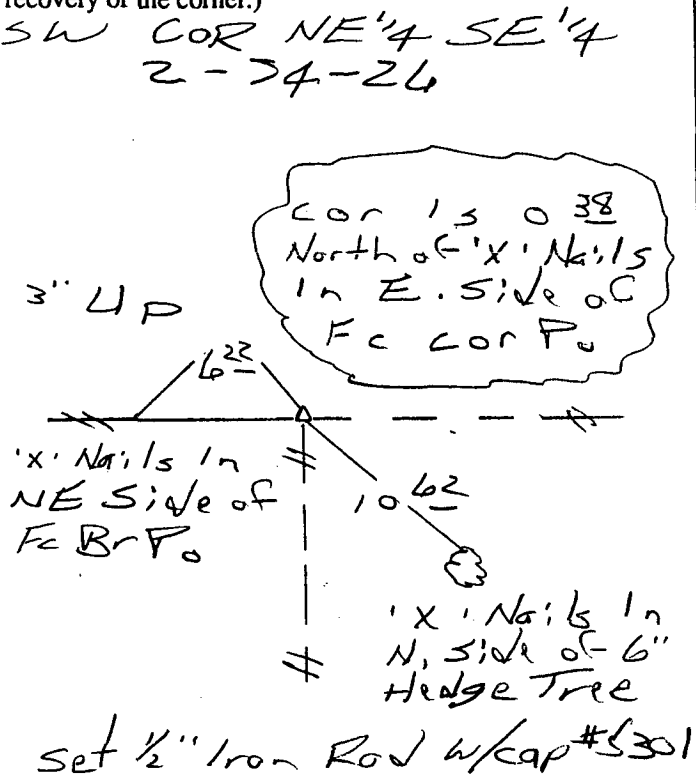
Land Survey Monuments situated in Section 2, Township 24, Range 26 West, of the Fifth Principal Meridian, MADISON County, Iowa. Previously recorded in N/A in County Recorder's Office.
(book, page, document number, etc.)

(Show reason for preparing this certificate, the evidence and detailed procedures used in establishing the corner positions and monumentation found or placed.)

Monument Description and Remarks:
SE COR NE 1/4 SE 1/4 - set on East line of SE 1/4 and boundary fence west.
SW COR NE 1/4 SE 1/4 - Accepted old fence corner location.

PLAN - VIEW

(Show a minimum of three reference ties to durable physical objects, relevant monuments and physical conditions that will enable recovery of the corner.)



I hereby certify that the survey work was completed and this land surveying document was prepared by me or under my direct personal supervision and that I am a duly licensed Land Surveyor under the laws of the state of Iowa.

Signature: Franklin A. Norton
 Name typed or printed: FRANKLIN A. NORTON

Date: 2-28-98 Lisc. No. 5301

My license renewal date is December 31, 1998

Corners	Section	Twp	Range
SW COR NE 1/4 SE 1/4	2	24	26
SE COR NE 1/4 SE 1/4	2	24	26

