

REC \$ 5.00
AUD \$
R.M.F. \$ 1.00

FILED NO. 3893
BOOK 1 PAGE 610
98 APR -9 PM 1:54
MICHELLE UTSLER
RECORDER
MADISON COUNTY, IOWA

COMPUTER
RECORDED
COMPARED

VANCE & HOCHSTETLER, P.C. CONSULTING ENGINEERS, WINTERSSET, IOWA (515)462-3995

CHARLES T. VANCE, 110 West Green St., Winterset, Iowa 50273
JAMES M. HOCHSTETLER, 110 West Green St., Winterset, Iowa 50273

SLSI 9-94

UNITED STATES PUBLIC LAND SURVEY CORNER CERTIFICATE

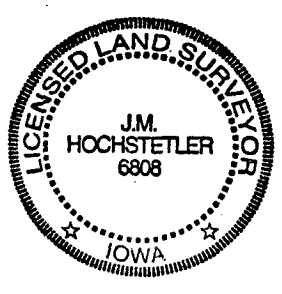
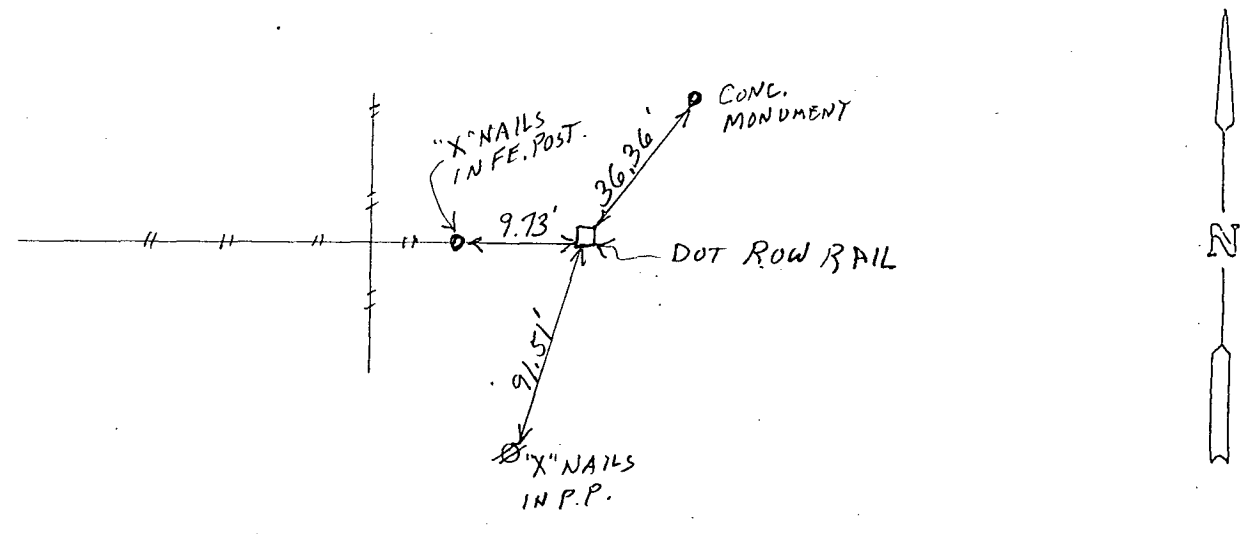
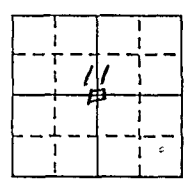
OF
Land Survey Monuments situated in Section 11, Township 75 N, Range 28 W, of the Fifth Principal Meridian, MADISON County, Iowa.
Previously recorded in _____ in County Recorder's Office.
(book, page, document number, etc.)

(Show reason for preparing this certificate, the evidence and detailed procedures used in establishing the corner positions and monumentation found or placed.)

Monument Description and Remarks: CENTER OF SECTION - Found Iowa DOT
RAIL IN LINE WITH FENCE TO WEST.

PLAN - VIEW

(Show a minimum of three reference ties to durable physical objects, relevant monuments and physical conditions that will enable recovery of the corner.)



I hereby certify that this land surveying document was prepared and the related survey work was performed by me or under my direct personal supervision and that I am a duly licensed Land Surveyor under the laws of the State of Iowa.
J.M. Hochstetler
J.M. HOCHSTETLER
License number 6808
Date 3/27/98
My license renewal date is December 31, 1999.
Pages or sheets covered by this seal: 1

List Corners to be Indexed

Corners	Section	Twp	Range
CENTER	11	75N	28W