

UNITED STATES PUBLIC LAND SURVEY CORNER CERTIFICATE

OF

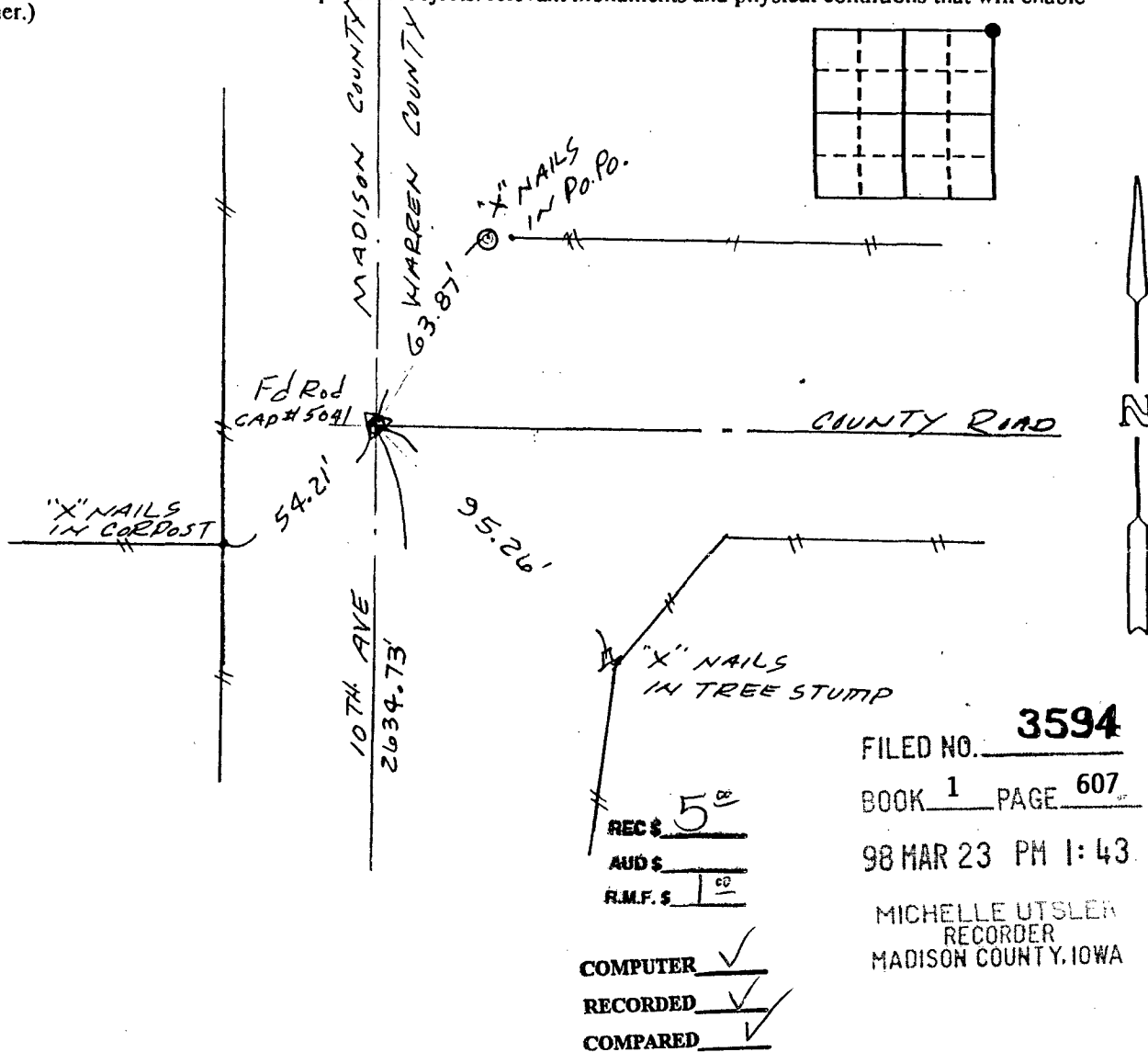
Land Survey Monuments situated in Section 12, Township 74 N, Range 26 W, of the Fifth Principal Meridian, MADISON County, Iowa.
 Previously recorded in Book NONE, Page NONE.

(Show reason for preparing this certificate, the evidence and detailed procedures used in establishing the corner positions and monumentation found or placed.)

Monument Description and Remarks: FOUND I. ROD / CAP # 5041
FOUND NO REF TIES IN FIELD OR AT COURT HOUSE

PLAN - VIEW

(Show a minimum of three reference ties to durable physical objects, relevant monuments and physical conditions that will enable recovery of the corner.)



FILED NO. **3594**
 BOOK 1 PAGE 607
 98 MAR 23 PM 1:43
 MICHELLE UTSLER
 RECORDER
 MADISON COUNTY, IOWA

REC \$ 5⁰⁰
 AUD \$ _____
 R.M.F. \$ 1⁰⁰
 COMPUTER
 RECORDED
 COMPARED

I hereby certify that the survey work was completed and this certificate was prepared by me or under my direct personal supervision and that I am a duly registered land surveyor under the laws of the state of Iowa.

Barry Bishop
 REGISTERED LAND SURVEYOR NO. 3169-

List Corners to be Indexed

| Corners | Section | Twp | Range |
|-----------|---------|--------|--------|
| N.E. COR. | 12 | T 74 N | R 26 W |

SEAL

