

REC 5<sup>00</sup>  
A.D.S. TD  
R.M.F.S. TD

FILED NO. **3006**

BOOK 1 PAGE 585

98 FEB 17 PM 2:21

COMPUTER   
RECORDED   
COMPARED

MICHELLE UTSLER  
RECORDER

VANCE & HOCHSTETLER, P.C., CONSULTING ENGINEERS, WINTERSSET, IOWA (515) 462-3995  
CHARLES T. VANCE, 110 West Green St., Winterset, Iowa, 50273  
JAMES M HOCHSTETLER, 110 West Green St., Winterset, Iowa 50273

### UNITED STATES PUBLIC LAND SURVEY CORNER CERTIFICATE

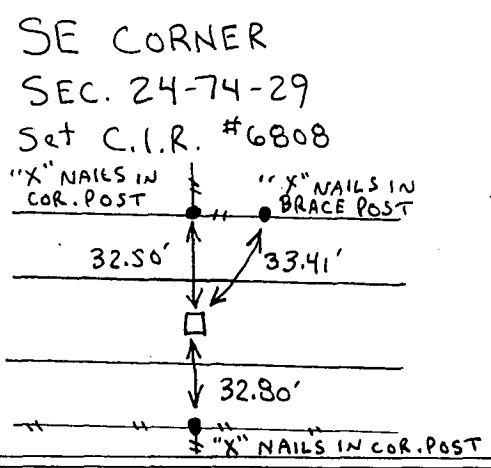
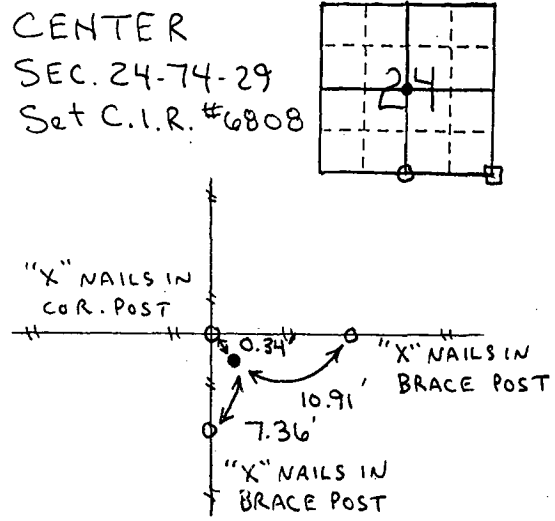
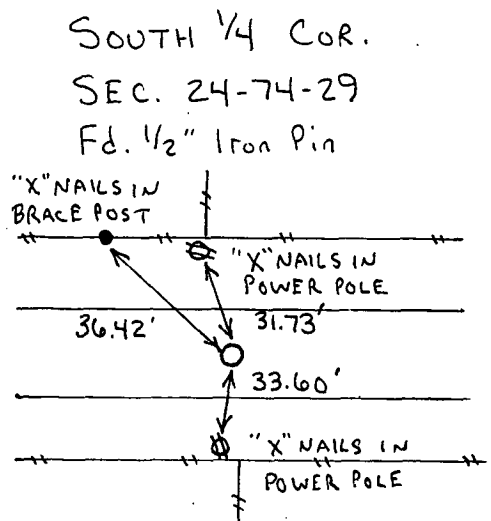
Land Survey Monuments situated in Section 24 OF 24, Township 74 NORTH, Range 29 WEST, of the Fifth Principal Meridian, MADISON County, Iowa.  
Previously recorded in \_\_\_\_\_ in County Recorder's Office.  
(book, page, document number, etc.)

(Show reason for preparing this certificate, the evidence and detailed procedures used in establishing the the corner positions and monumentation found or placed.)

Monument Description and Remarks:  
S. 1/4 cor. - Fd. 1/2" Iron Pin  
Center - Set C.I.R. #6808 at existing fence corner  
SE cor. - Set C.I.R. #6808 at

#### PLAN - VIEW

(Show a minimum of three reference ties to durable physical objects, relevant monuments and physical conditions that will enable recovery of the corner.)



I hereby certify that this land surveying document was prepared and the related survey work was performed by me or under my direct personal supervision and that I am a duly licensed Land Surveyor under the laws of the State of Iowa.  
J.M. Hochstetler  
J.M. HOCHSTETLER  
License number 6808  
Date 2/16/98  
My license renewal date is December 31, 1999.  
Pages or sheets covered by this seal: 1

#### List Corners to be Indexed

Corners	Section	Twp	Range
S. 1/4 cor.	24	74N	29W
Center	24	74N	29W
SE cor.	24	74N	29W