

REC \$ 5.00
AUD \$ _____
R.M.F. \$ 1.00

FILED NO. 3144

BOOK 1 PAGE 591

98 FEB 26 PM 1:29

COMPUTER
RECORDED
COMPARED

MICHELLE UTSLER
50273 RECORDED
MADISON COUNTY, IOWA 462-2166

Prepared By: J. Brian Morrissey, Morrissey Surveying, 1926 Pammel Park Road, Winterset, Ia.

UNITED STATES PUBLIC LAND SURVEY CORNER CERTIFICATE OF

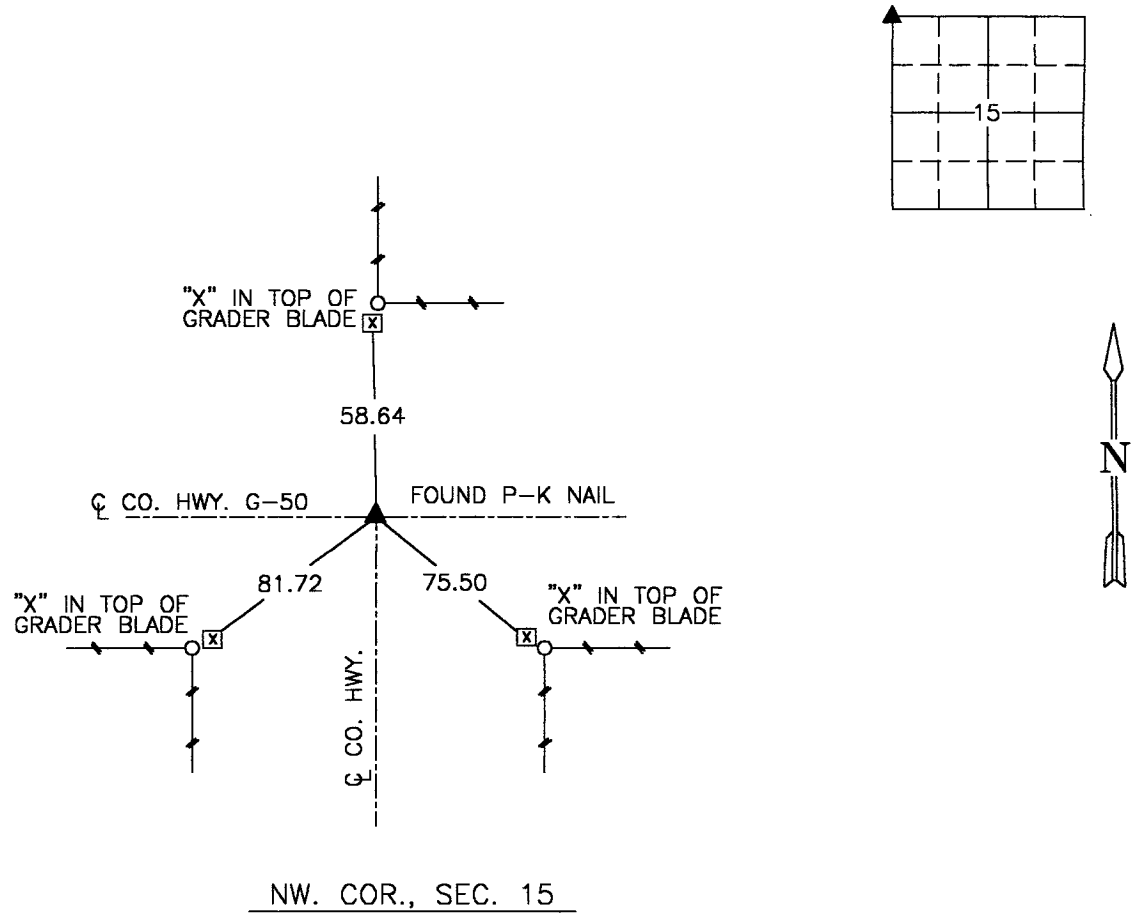
Land Survey Monuments situated in Section 15, Township 75 N, Range 27 W, of the Fifth Principal Meridian, Madison County, Iowa. Previously recorded in N. A. in County Recorders Office.
(book, page, document number, etc.)

(Show reason for preparing this certificate, the evidence and detailed procedures used in establishing the corner positions and monumentation found or placed.)

Monument Description and Remarks: Found P-K nail. Accepted position previously logged by County Engineer's Office.

PLAN VIEW

(Show a minimum of three reference ties to durable physical objects, relevant monuments and physical conditions that will enable recovery of the corner.)



I hereby certify that the survey work was completed and this certificate was prepared by me or under my direct personal supervision and that I am a duly Licensed Land Surveyor under the laws of the State of Iowa.

Signature: J. Brian Morrissey Date: 2/25/98
J. Brian Morrissey

License number 7995.
My license renewal date is December 31, 1999.