



REC: 5⁰⁰
 AUD:
 R.M.F.: 12

FILED NO. **2511**
 BOOK 1 PAGE 570
 98 JAN -7 PM 1:26

COMPUTER
 RECORDED
 COMPARED

MICHELLE UTSLER
 RECORDER
 MADISON COUNTY, IOWA

VANCE & HOCHSTETLER, P.C. CONSULTING ENGINEERS, WINTERSSET, IOWA (515)462-3995

CHARLES T. VANCE, 110 West Green St., Winterset, Iowa 50273
 JAMES M. HOCHSTETLER, 110 West Green St., Winterset, Iowa 50273

SLSI 9-94

UNITED STATES PUBLIC LAND SURVEY CORNER CERTIFICATE

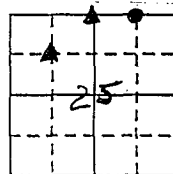
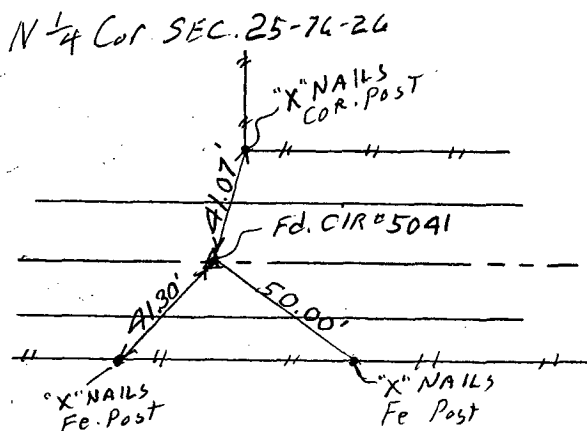
OF
 Land Survey Monuments situated in Section 25, Township 76 N, Range
26 W, of the Fifth Principal Meridian, MADISON County, Iowa.
 Previously recorded in _____ in County Recorder's Office.

(Show reason for preparing this certificate, the evidence and detailed procedures used in establishing the corner positions and monumentation found or placed.)

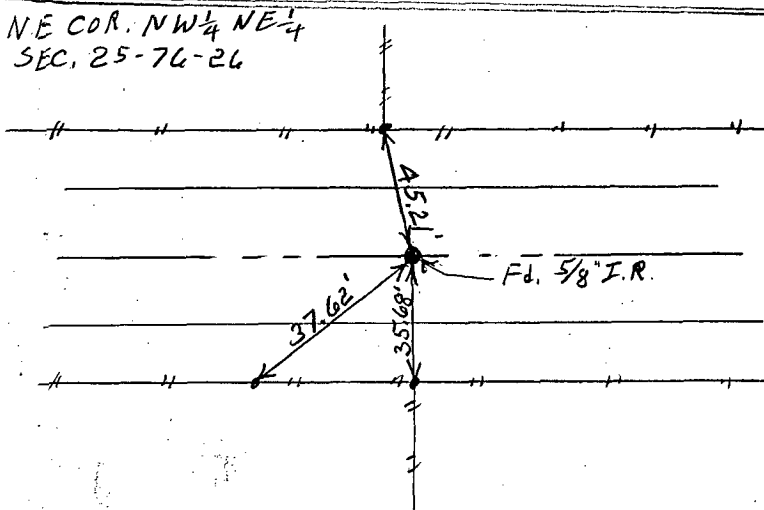
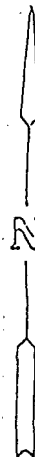
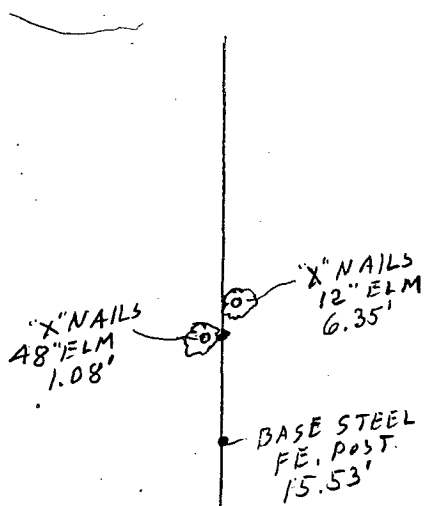
Monument Description and Remarks: N¹/₄ Cor - Found CIR # 5041 Set for Corner
N.E. COR NW¹/₄ NE¹/₄ - Found 5/8" Rebar in 4 Cu. Rd.
SW Cor. NE¹/₄ NW¹/₄ - Found CIR # 5041 Set in Fence for Corner.

PLAN - VIEW

(Show a minimum of three reference ties to durable physical objects, relevant monuments and physical conditions that will enable recovery of the corner.)

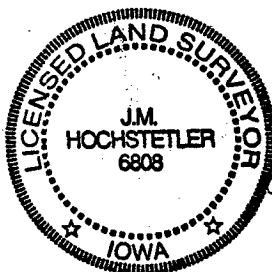


SW COR NE¹/₄ NW¹/₄
 SEC. 25-76-26



List Corners to be Indexed

Corners	Section	Twp	Range
N ¹ / ₄	25	76	26
NE COR, NW ¹ / ₄ NE ¹ / ₄	25	76	26
SW COR NE ¹ / ₄ NW ¹ / ₄	25	76	26



I hereby certify that this land surveying document was prepared and the related survey work was performed by me or under my direct personal supervision and that I am a duly licensed Land Surveyor under the laws of the State of Iowa.

J.M. Hochstetler
 J.M. HOCHSTETLER
 License number 6808
 My license renewal date is December 31, 1997
 Pages or sheets covered by this seal: 1