

RECS 5

AUDS

R.M.F.S. 1.00

FILED NO. 2097

BOOK 1 PAGE 565

97 DEC -1 PM 4: 09

COMPUTER ✓

RECORDED ✓

COMPARED ✓

MICHELLE UTSLI
RECORDER
502730 Madison County, Iowa

Prepared By: J. Brian Morrissey, Morrissey Surveying, 1926 Pammel Park Road, Winterset, Ia. 50273

UNITED STATES PUBLIC LAND SURVEY CORNER CERTIFICATE OF

Land Survey Monuments situated in Section 6, Township 76 N, Range 27 W, of the Fifth Principal Meridian, Madison County, Iowa. Previously recorded in N.A. in County Recorders Office.

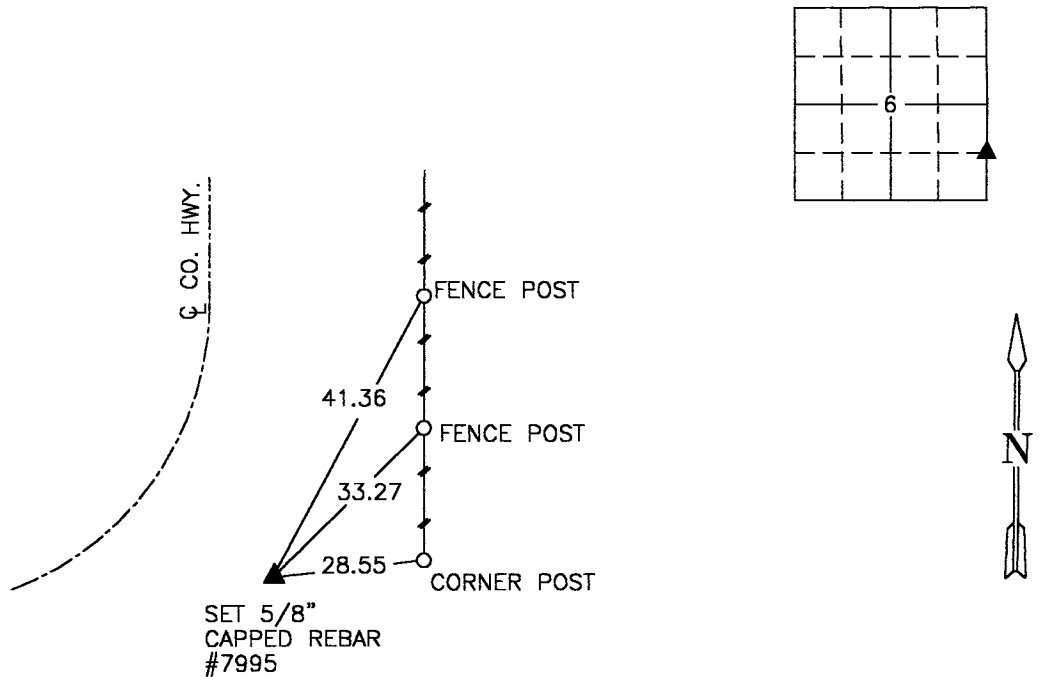
(book, page, document number, etc.)

(Show reason for preparing this certificate, the evidence and detailed procedures used in establishing the corner positions and monumentation found or placed.)

Monument Description and Remarks: Set 5/8" capped rebar, #7995 at mid point between E. 1/4 corner and SE. corner of section. Position of SE. corner based on found section corners and road monuments shown on Plat of Survey by P.L.S. #5041, recorded in Book 2, Page 367 - 369.

PLAN VIEW

(Show a minimum of three reference ties to durable physical objects, relevant monuments and physical conditions that will enable recovery of the corner.)



SE. COR., NE 1/4, SE 1/4, SEC. 6

NOTE: ALL TIES TO "X" NAILS UNLESS NOTED



I hereby certify that the survey work was completed and this certificate was prepared by me or under my direct personal supervision and that I am a duly Licensed Land Surveyor under the laws of the State of Iowa.

Signature: J. Brian Morrissey Date: 12/1/97
J. Brian Morrissey

License number 7995.

My license renewal date is December 31, 1997.

202-97-3