

REC. \$ 5.⁰⁰
AUD. \$
R.M.F. \$ 1.⁰⁰

FILED NO. 2096
BOOK 1 PAGE 564
97 DEC -1 PM 4:08

COMPUTER
RECORDED
COMPARED

MICHELLE UTSLEI
RECORDER
IOWA COUNTY REC'D

Prepared By: J. Brian Morrissey, Morrissey Surveying, 1926 Pammel Park Road, Winterset, Ia. 50273, (515) 462-2166

UNITED STATES PUBLIC LAND SURVEY CORNER CERTIFICATE OF

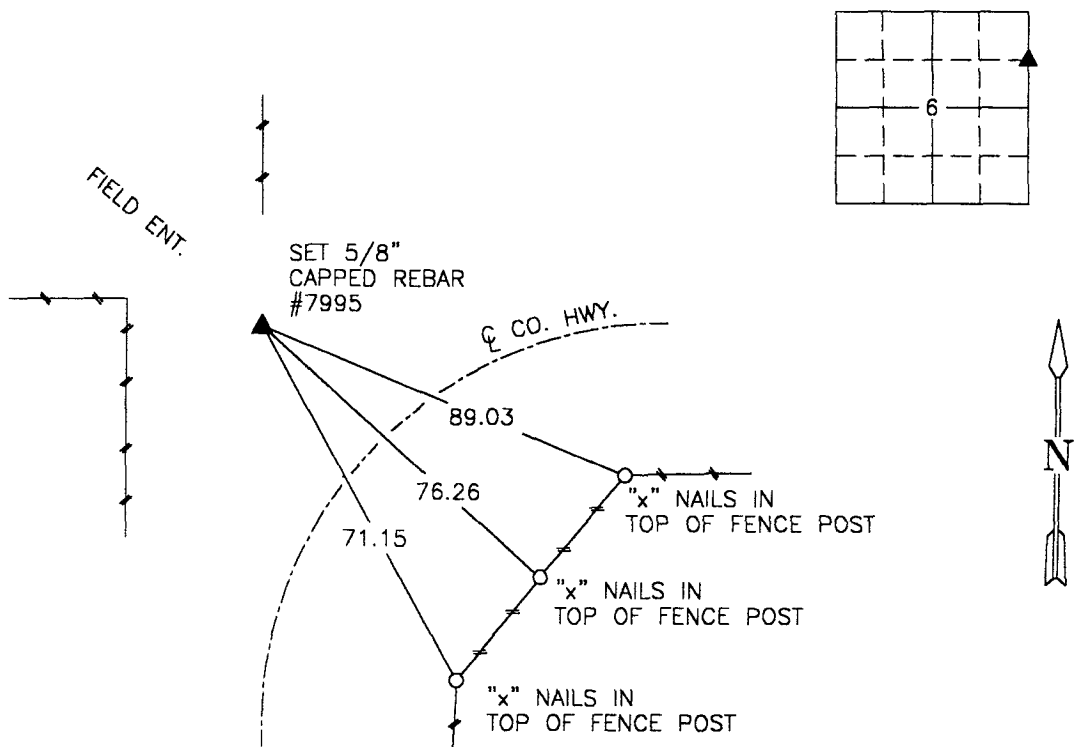
Land Survey Monuments situated in Section 6, Township 76 N, Range 27 W, of the Fifth Principal Meridian, Madison County, Iowa.
Previously recorded in BOOK 1, PAGE 146 in County Recorders Office.
(book, page, document number, etc.)

(Show reason for preparing this certificate, the evidence and detailed procedures used in establishing the corner positions and monumentation found or placed.)

Monument Description and Remarks: 1/2" iron pin previously recorded had been disturbed. Set 5/8" capped rebar, #7995 from ties by P.L.S. #5041.

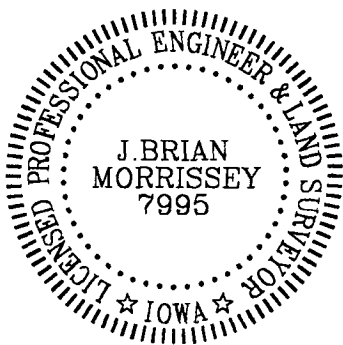
PLAN VIEW

(Show a minimum of three reference ties to durable physical objects, relevant monuments and physical conditions that will enable recovery of the corner.)



NE. COR., SE 1/4, NE 1/4, SEC. 6

NOTE: ALL TIES TO "X" NAILS UNLESS NOTED



I hereby certify that the survey work was completed and this certificate was prepared by me or under my direct personal supervision and that I am a duly Licensed Land Surveyor under the laws of the State of Iowa.

Signature: J. Brian Morrissey Date: 12/11/97
J. Brian Morrissey

License number 7995.

My license renewal date is December 31, 1997.

202-97-2