

COMPUTER
RECORDED
COMPARED

FILED NO. 1978
BOOK 1 PAGE 560
97 NOV 21 PM 3:59

REC \$ 5.00 MICHELLE UTSLER
AUD \$ _____ RECORDER
R.M.F. \$ 1.00 MADISON COUNTY, IOWA

VANCE & HOCHSTETLER, P.C. CONSULTING ENGINEERS, WINTERSSET, IOWA (515)462-3995

CHARLES T. VANCE, 110 West Green St., Winterset, Iowa 50273
JAMES M. HOCHSTETLER, 110 West Green St., Winterset, Iowa 50273
SLSI 9-94

UNITED STATES PUBLIC LAND SURVEY CORNER CERTIFICATE

OF
Land Survey Monuments situated in Section 2, Township 76 NORTH, Range 27 WEST, of the Fifth Principal Meridian, MADISON County, Iowa.
Previously recorded in _____ in County Recorder's Office.
(book, page, document number, etc.)

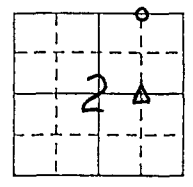
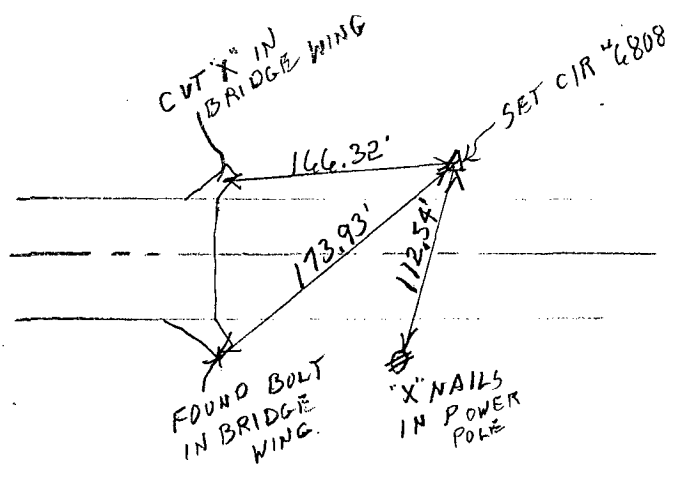
(Show reason for preparing this certificate, the evidence and detailed procedures used in establishing the corner positions and monumentation found or placed.)

Monument Description and Remarks:
NW cor. NE Fr. 1/4 NE. 1/4 - Set C.I.R. #6808
SW cor. SE. 1/4 NE. 1/4 - Found C.I.R. #5041

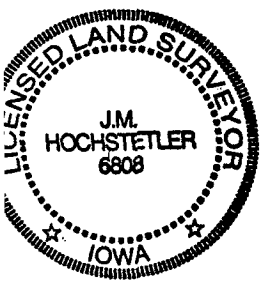
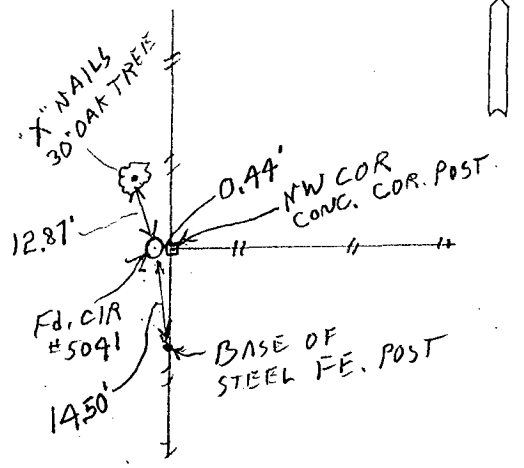
PLAN - VIEW

(Show a minimum of three reference ties to durable physical objects, relevant monuments and physical conditions that will enable recovery of the corner.)

NW Corner
NE Fr. 1/4 NE. 1/4
Sec. 2-76-27
Set CIR #6808



SW Corner
SE. 1/4 NE. 1/4
Sec. 2-76-27
Fd. CIR #5041



I hereby certify that this land surveying document was prepared and the related survey work was performed by me or under my direct personal supervision and that I am a duly licensed Land Surveyor under the laws of the State of Iowa.
J.M. Hochstetler
J.M. HOCHSTETLER
License number 6808
My license renewal date is December 31, 1997.
Pages or sheets covered by this seal: 1

List Corners to be Indexed

Corners	Section	Twp	Range
NW cor.	0	76 N	27 W
NE Fr. 1/4 NE. 1/4	2		
SW cor.	Δ	76 N	27 W
SE. 1/4 NE. 1/4	2		