

REC 5⁰⁰
AUD
R.M.F. \$ 1⁰⁰

FILED NO. 2512
BOOK 1 PAGE 571
98 JAN -7 PM 1:27
MICHELLE UTSLER
RECORDER
MADISON COUNTY, IOWA

COMPUTER ✓
RECORDED ✓
COMPARED ✓

VANCE & HOCHSTETLER, P.C. CONSULTING ENGINEERS, WINTERSSET, IOWA (515)462-3995

CHARLES T. VANCE, 110 West Green St., Winterset, Iowa 50273
JAMES M. HOCHSTETLER, 110 West Green St., Winterset, Iowa 50273

SLSI 9-94

UNITED STATES PUBLIC LAND SURVEY CORNER CERTIFICATE

OF
Land Survey Monuments situated in Section 23, Township 76 North, Range 27 West, of the Fifth Principal Meridian, MADISON County, Iowa.
Previously recorded in _____ in County Recorder's Office.

(book, page, document number, etc.)

(Show reason for preparing this certificate, the evidence and detailed procedures used in establishing the corner positions and monumentation found or placed.)

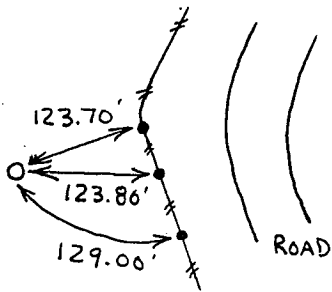
Monument Description and Remarks:

SE cor. SW. 1/4 SE. 1/4 - Set C.I.R. #6808 at split between SE cor. & S. 1/4 cor.
NE cor. SW. 1/4 SE. 1/4 - Set C.I.R. #6808
NW cor. SW. 1/4 SE. 1/4 - Set C.I.R. #6808 at existing fence corner.

PLAN - VIEW

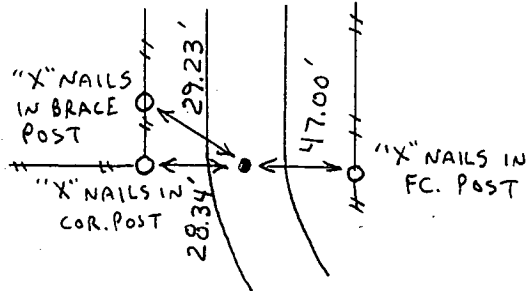
(Show a minimum of three reference ties to durable physical objects, relevant monuments and physical conditions that will enable recovery of the corner.)

SE CORNER
SW. 1/4 SE. 1/4
SEC. 23-76-27
Set C.I.R. #6808

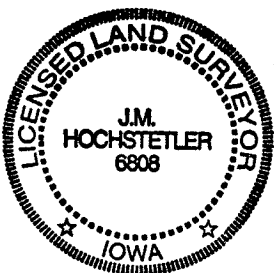
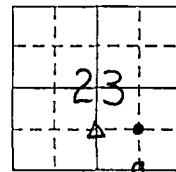
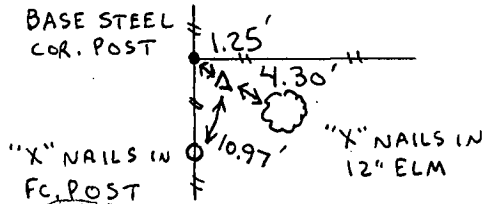


All ties are to spikes in the tops of fence posts.

NE CORNER
SW. 1/4 SE. 1/4
SEC. 23-76-27
Set C.I.R. #6808



NW CORNER
SW. 1/4 SE. 1/4
SEC. 23-76-27
Set C.I.R. #6808



I hereby certify that this land surveying document was prepared and the related survey work was performed by me or under my direct personal supervision and that I am a duly licensed Land Surveyor under the laws of the State of Iowa.

J.M. Hochstetler
J.M. HOCHSTETLER
License number 6808
Date 12/29/97
My license renewal date is December 31, 1997.
Pages or sheets covered by this seal: 1

List Corners to be Indexed

Corners	Section	Twp	Range
SE cor. SW. 1/4 SE. 1/4	23	76N	27W
NE cor. SW. 1/4 SE. 1/4	23	76N	27W
NW cor. SW. 1/4 SE. 1/4	23	76N	27W